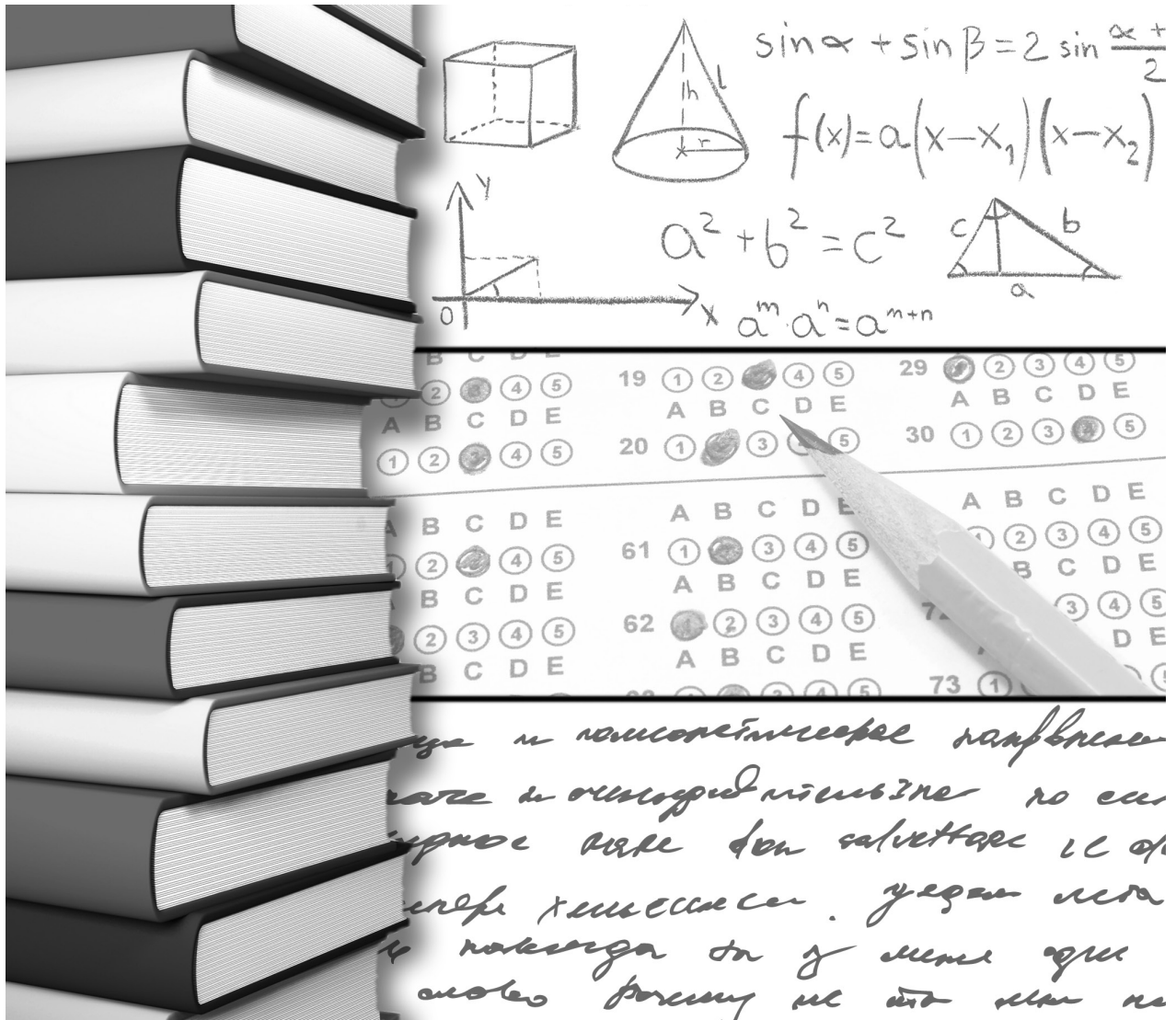


THE NORTH CAROLINA 2011 SAT REPORT

The URL for the complete report:

<http://www.ncpublicschools.org/accountability/reporting/sat/2011>



STATE BOARD OF EDUCATION

The guiding mission of the North Carolina State Board of Education is that every public school student will graduate from high school, globally competitive for work and postsecondary education and prepared for life in the 21st Century.

WILLIAM C. HARRISON

Chairman :: Fayetteville

REGINALD KENAN

Rose Hill

JOHN A. TATE III

Charlotte

WAYNE MCDEVITT

Vice Chair :: Asheville

KEVIN D. HOWELL

Raleigh

ROBERT "TOM" SPEED

Boone

WALTER DALTON

Lieutenant Governor :: Rutherfordton

SHIRLEY E. HARRIS

Troy

MELISSA E. BARTLETT

Roxboro

JANET COWELL

State Treasurer :: Raleigh

CHRISTINE J. GREENE

High Point

PATRICIA N. WILLOUGHBY

Raleigh

JEAN W. WOOLARD

Plymouth

NC DEPARTMENT OF PUBLIC INSTRUCTION

June St. Clair Atkinson, Ed.D., State Superintendent

301 N. Wilmington Street :: Raleigh, North Carolina 27601-2825

In compliance with federal law, NC Public Schools administers all state-operated educational programs, employment activities and admissions without discrimination because of race, religion, national or ethnic origin, color, age, military service, disability, or gender, except where exemption is appropriate and allowed by law.

Inquiries or complaints regarding discrimination issues should be directed to:

Dr. Rebecca Garland, Chief Academic Officer :: Academic Services and Instructional Support
6368 Mail Service Center, Raleigh, NC 27699-6368 :: Telephone: (919) 807-3200 :: Fax: (919) 807-4065

Visit us on the Web :: www.ncpublicschools.org

M0910

Table of Contents

	<u>Page</u>
List of Tables	ii
List of Figures	iii-iv
A Note on the Use of Aggregate SAT Data	v
Background	
Evolution of the SAT	1-3
Factors Influencing Score Fluctuations	4-5
Validity of the SAT for Predicting First-Year College Grade Point Average (FYGPA).....	5
Differential Validity and Prediction of the SAT.....	6
Scope and Limitations	7
Overall Performance (Public and Private Schools)	8-11
Critical Reading and Mathematics Scores	12-13
Gender	11-15
Race/Ethnicity	16-18
Race/Ethnicity by Gender	18-21
Family Income	21-23
Grade Point Average (GPA)	23-25
North Carolina and the University of North Carolina System	26-27
North Carolina’s School Systems and Schools	28-29
Public Schools.....	30-31
References	32-33
Appendices	34
North Carolina and the Nation	35-42
Performance of the 115 Public School Systems, Charter Schools, North Carolina School of the Arts, and North Carolina School of Science and Mathematics	43-49
Distribution of North Carolina’s Public School Systems by Mean Total SAT Score.....	50
Performance of the Fifty States	51-55

Source: Derived from data provided by the College Board.
 Copyright © 2010-2011 The College Board. www.collegeboard.com

List of Tables

<u>Table</u>	<u>Page</u>
1	Percentages of Schools Nationally Whose Mean SAT Reasoning Test Scores Rose or Fell, 2010-20115
2	Mean Critical Reading and Mathematics SAT Scores for North Carolina and the Nation by Gender, 2001-201115
3	Mean SAT Scores for North Carolina and the United States, 1972-201136
4	Frequency Distribution of Critical Reading, Mathematics, and Writing SAT Scores for North Carolina’s Public School Students, 2010-201137
5	Mean Total SAT Scores (CR + M) by Student Profile Characteristics, 2010-201141
6	Mean Total SAT Scores (CR + M) for the United States and North Carolina by Student Profile Characteristics, 2007-201142
7	SAT Performance by Students in North Carolina’s Public School Systems and Schools, 2009-201143-49
8	Distribution of North Carolina’s Public School Systems by Mean Total SAT Scores (Critical Reading + Mathematics), 2010-201144
9	Mean Critical Reading (CR), Mathematics (M), Writing (W), M + CR, and M + CR + W Scores and Percent Tested by State, 2010-201153
10	Change in Mean Total SAT Scores [Critical Reading (CR) + Mathematics (M)] by State, 1991-201154
11	Public and Non-Public Schools: Mean SAT Reasoning Test™, Critical Reading, Mathematics, and Writing Scores by State, with Changes for 2011, 2010, and 200155
12	Public Schools: Mean SAT Reasoning Test™, Critical Reading, Mathematics, and Writing Scores by State, with Changes for 2011, 2010, and 200156

List of Figures

<u>Figure</u>		<u>Page</u>
1	Mean Total SAT Scores (Critical Reading + Mathematics) for the United States, the Southeast Region, and North Carolina, 2001-2011	10
2	Average Yearly SAT Score Gains for North Carolina and the United States, 1989-2011.....	11
3	Mean SAT Critical Reading Scores for North Carolina and the Nation, 2001-2011	12
4	Mean SAT Mathematics Scores for North Carolina and the Nation, 2001-2011	13
5	Mean Total SAT Scores (Critical Reading + Mathematics) for the United States and North Carolina by Gender, 2001-2011.....	14
6	Mean Total SAT Scores (Critical Reading + Mathematics) for North Carolina by Race/Ethnicity, 2001-2011	17
7	Mean Total SAT Scores (Critical Reading + Mathematics) for North Carolina and the United States by Race/Ethnicity, 2010-2011	18
8	Mean SAT Scores in Critical Reading for North Carolina's Racial/Ethnic Groups by Gender, 2010-2011	19
9	Mean SAT Scores in Mathematics for North Carolina's Racial/Ethnic Groups by Gender, 2010-2011	20
10	Mean SAT Scores in Writing for North Carolina's Racial/Ethnic Groups by Gender, 2010-2011	21
11	Mean Total SAT Scores (Critical Reading + Mathematics) for Students in North Carolina and the Nation by Family Income, 2010-2011	22
12	Mean Total SAT Scores (Critical Reading + Mathematics) for North Carolina by Family Income and Racial/Ethnic Group, 2010-2011	23
13	Mean Total SAT Scores (Critical Reading + Mathematics) and Self-Reported Grade Point Average for Public School Students in North Carolina, 2010-2011.....	24
14	Mean Total SAT Scores (Critical Reading + Mathematics) and Grade Point Averages (GPA) for North Carolina's Public School Male and Female Students, 2010-2011.....	25

<u>Figure</u>	<u>Page</u>
15	The 25th, 50th, and 75th Percentiles of SAT Total Scores (Critical Reading + Mathematics) for National College-Bound Seniors (2011), North Carolina’s College-Bound Seniors (2011), Entering Freshmen at Institutions of the University of North Carolina System, and Selected Private Universities (Fall 2010).27
16	Scatter Plot of Mean Total SAT Scores (Critical Reading + Mathematics) by Percent of Students Tested for All States, 2010-201128
17	Scatter Plot of Mean Total SAT Scores (Critical Reading + Mathematics) by Percent of Students Tested for North Carolina Public High Schools, 2010-201129
18	Mean Total SAT Scores (Critical Reading + Mathematics) for Public School Students in North Carolina and the Nation, 2001-2011.....30
19	Distribution of SAT Critical Reading Scores for North Carolina’s Public Schools, 2010-201138
20	Distribution of SAT Mathematics Scores for North Carolina’s Public Schools, 2010-201139
21	Distribution of SAT Writing Scores for North Carolina’s Public Schools, 2010-2011.....40

A Note on the Use of Aggregate SAT Data*

As measures of developed critical reading, mathematical and writing abilities important for success in college, SAT scores are useful in making decisions about individual students and assessing their academic preparation. Because of the increasing public interest in educational accountability, aggregate test data continue to be widely publicized and analyzed. Aggregate scores can be considered one indicator of educational quality when used in conjunction with a careful examination of other conditions that affect the educational enterprise.

However, it is important to note that many College Board tests are taken only by particular groups of self-selected students. Therefore, aggregate results of their performance on these tests usually do not reflect the educational attainment of all students in a school, district, or state.

Useful comparisons of students' performance are possible only if all students take the same test. Average SAT scores are not appropriate for state comparisons because the percentage of SAT takers varies widely among states. In some states, a very small percentage of the college-bound seniors take the SAT. Typically, in a state with a very small percentage of the college-bound population taking the SAT, these students have strong academic backgrounds and are applicants to the nation's most selective colleges and scholarship programs. Therefore, it is expected that the SAT critical reading, mathematics and writing averages reported for these states will be higher than the national averages. In states where a greater proportion of students with a wide range of academic backgrounds take the SAT, the scores are closer to the national averages.

* Excerpted from *SAT Trends: Background on the SAT Takers in the Class of 2011*. Copyright 2011 by the College Entrance Examination Board. All rights reserved.

Background

Evolution of the SAT

The SAT is a curriculum-based test used by educators to assess how well students are prepared for post-secondary college and career opportunities. Typically, students take the test during their junior and senior years to assess their ability to reason, to solve problems, and to gauge the knowledge and skills they develop in their high school course work (College Board, 2011).

For nearly a century, the SAT has been used by college admissions officers as one of the tools for determining a student's potential for succeeding in college. In addition to SAT scores, high school transcripts, high school grades, course selection, etc. are used. Since course content and grading standards may vary widely among high schools, the SAT provides colleges and universities an objective measure, which is uniform across all schools.

Unlike the initial administration of the SAT in the late 1920's when SAT takers were a few thousand mainly white male students, the College-Bound Seniors population was more diverse in 2011. The 1,647,123 public and private college-bound students who took the SAT in 2011 were heterogeneous in composition. Notably, 1) larger numbers of traditionally under-represented minorities were included; 2) female test-takers outnumbered men; 3) one in four test-takers spoke languages other than English; 4) larger numbers of first-generation college applicants were included; 5) greater than 80 percent of all test-takers were from public schools; and 6) seventy-five percent of test-takers required financial aid (College Board, 2011).

Fifty percent of the nation's 3,280,185 million (WICHE, 2008) public and nonpublic high school college-bound students took the SAT in 2011, compared with 67 percent of the 92,077 (WICHE, 2008) public and nonpublic high school college-bound seniors in North Carolina. By comparison, 42 percent of the nation's projected 2,990,159 million public school college-bound seniors took the test in 2011, compared with 64 percent of North Carolina's projected 84,401 college-bound seniors.

Since its initial development in 1926, the SAT has undergone changes in an effort to align its content with evolving curricula and instructional practices in high schools and colleges (College Board, 2004). Below is a brief chronology of the major changes that have occurred since the test's original inception:

1994

- Critical reading questions were given more emphasis.
- Longer reading passages were added.
- Non-multiple choice questions in mathematics were introduced.
- Calculators were allowed for the first time.
- Antonyms were eliminated.

1995

- The Educational Testing Service (ETS) changed the test's name from the *Scholastic Aptitude Test* to the *Scholastic Assessment Test*. ETS aimed to retain the original acronym, while dispelling the numerous objections to the test being called an 'aptitude' test.

- The SAT’s scale was re-centered due to increased diversity of the college-bound senior population. The original SAT verbal and mathematics scales derived their universal meaning from a 1941 reference group of slightly more than 10,000 test takers, which was less heterogeneous than the college-bound senior population in 1990. Re-centering the SAT scales resulted in two major changes: (1) The average scores for both the SAT I critical reading and mathematics tests were re-established at 500 – the midpoint of the 200-800 scale; and (2) critical reading and mathematics scales were aligned so that critical reading and mathematics scores could be compared directly. Prior to re-centering, critical reading and mathematics scores could be compared only by looking at percentiles.

2005

- In an effort to better align the SAT’s content with contemporary curricula and practices in high schools and colleges, a new test was administered.
- The Verbal test was renamed “Critical Reading.”
- Shorter reading passages were added to existing long reading passages.
- Analogies were eliminated.
- The mathematics section was revised to increase alignment with curricula and admissions expectations.
- Quantitative comparisons were eliminated.
- Content from third-year college-preparatory mathematics was added.
- A writing section was added to help colleges make better admissions and placement decisions and to reinforce the importance of writing in a student’s education. The writing test included multiple-choice items, grammar usage questions, and a written essay.

Current SAT

The maximum total score on the current SAT is 2400 (800 points for each of its three subsections: critical reading, mathematics, and writing). To compare current SAT total scores with total scores prior to 2006, the sum of the critical reading and mathematics subsections are used.

The critical reading section (formerly called verbal) focuses on reading and gauges students’ ability to draw inferences, to synthesize information, to differentiate between main and supporting ideas, and to understand vocabulary from context.

The mathematics section requires students to apply numerical concepts to solve problems and to use data literacy skills to interpret tables, charts, and graphs.

The writing section determines students’ ability to communicate ideas clearly and effectively, to improve writing through revision and editing, to recognize and identify sentence-level errors, to understand grammatical elements and structures, and to improve coherence of ideas within and among paragraphs.

The following table is a summary of the nine subsections included on the current test:

Section	Content	Number of Questions
Reading 70 minutes (two 25-minute subsections and one 20-minute subsection)	Extended Reasoning	36-40
	Literal Comprehension	4-6
	Vocabulary in Context	4-6
	Sentence Completions	19
	Total	67
Mathematics 70 minutes (two 25-minute subsections and one 20-minute subsection)	Number and Operations	11-14
	Algebra and Functions	19-22
	Geometry and Measurement	14-16
	Data Analysis, Statistics and Probability	5-8
	Total	54
Writing 60 minutes (one 25-minute essay, one 25-minute multiple-choice subsection, and one 10-minute multiple-choice subsection)	Essay	1
	Improving Sentences	25
	Identifying Sentence Errors	18
	Improving Paragraphs	6
	Total	50

Source: The College Board. "About the SAT". *Educator's Handbook for the SAT and the SAT Subject Tests*, 2011-12.

An additional 25-minute section, sometimes referred to as the "equating" or variable subsection does count toward the final score, and is designed to equate scores on newer editions of the SAT with scores on older editions and to test new questions for future editions. which may be critical reading, mathematics, or writing multiple-choice, makes the total testing time for the current SAT three hours and 45 minutes, compared to three hours for the previous version. This section, The format of the three-hour and forty-five minute current version of the SAT bears little resemblance to the original test, which took about 97 minutes to complete (Lawrence et al., 2002).

Factors Influencing Score Fluctuations

For the sixth consecutive year, total average SAT scores for North Carolina and the nation are lower than they were prior to the inception of the current SAT, which was revised in March 2005. The Critical Reading and Mathematics sections of the current SAT were revamped, and a mandatory Writing section was incorporated. Specific reasons for decreases in SAT scores over the past six years have not been firmly established. However, three of the more common explanations are as follows:

1) Change in Test-Taking Patterns: Five years ago, Gaston Caperton, President of the College Board, suggested that the addition of Writing to the SAT might have indirectly influenced the recent decline in SAT scores when he stated: “When a new test is introduced, students usually vary their test-taking behavior in a variety of ways and this affects scores” (The College Board, 2006). Historically, students who take the SAT a second time increase their combined score by 30 points. In 2006, fewer students took the SAT a second time which, according to the College Board, contributed to a score decline of seven points across the Critical Reading and Mathematics sections of the SAT. In 2006, the nation’s Critical Reading score declined from 508 to 503 and its Mathematics score declined from 520 to 518 for a net decrease of seven points. North Carolina’s Critical Reading score declined by four points, while its Mathematics score increased by two points -- a net decrease of two points. The decrease in SAT repeat test taking after the addition of the mandatory Writing section might be attributed to the increase in cost from \$28.50 to \$41.50

2) Increased Testing Time: Although there has been speculation that the 45-minute increase in testing time has adversely affected student performance, the College Board contends that its research shows otherwise. In its analyses, the College Board reported no differences in either the number of items correct or the number of items omitted for sections that appeared early in the test and for sections that appeared later in the test.

3) Most Changes in SAT Scores Are Not Unusual. Table 1 shows the percentage of schools in the nation whose mean SAT scores rose or fell in 2010-2011. SAT score changes in low-volume schools (50-99 SAT takers) tend to be larger than in medium-volume (100-299 SAT takers) and high-volume (300+) schools. For example, 60 percent of low-volume schools (50-99 SAT takers) had SAT mathematics scores rise or fall by 10 or more points, compared with 31 percent of high-volume schools (300+ test-takers). Similarly, nearly 50 percent of all schools in the nation with 50 or more SAT takers had critical reading, mathematics, and writing scores that increased or decreased by 10 points in 2011 from the previous year.

Table 1. Percentage of Schools Nationally Whose Mean SAT Reasoning Test Scores Rose or Fell, 2010-2011

	Scores rose or fell at least this many points	Percentage of schools with this much score change, by number of test-takers			Percentage of all schools with 50+ test-takers with this much score change
		50-99	100-299	300+	
Critical Reading	10	59%	44%	31%	48%
	20	27%	13%	6%	18%
	30	11%	3%	2%	6%
	40	4%	1%	1%	2%
	50	2%	0%	1%	1%
Mathematics	10	60%	46%	31%	49%
	20	28%	14%	6%	18%
	30	11%	4%	2%	6%
	40	4%	1%	1%	2%
	50	2%	0%	1%	1%
Writing	10	58%	46%	33%	49%
	20	27%	13%	7%	18%
	30	11%	3%	2%	6%
	40	3%	1%	1%	2%
	50	1%	0%	0%	1%

Source: The College Board. (September, 2011). SAT Trends: Background on the SAT Takers in the Class of 2011. P. 13. New York: Author.

When interpreting SAT score changes from year to year, the following points should be kept in mind:

- Changes in SAT scores from year-to-year are not unusual.
- Low-volume schools tend to have larger changes in critical reading, mathematics, and writing scores than medium-volume and high-volume schools.
- The larger the test-taking population, the smaller SAT score changes tend to be.

Validity of the SAT for Predicting First-Year College Grade point Average (FYGPA)

The College Board’s research shows that changes incorporated in the current SAT did not substantially change how well the test predicts first-year college performance (Kobrin, Patterson, Shaw, Mattern, and Barbuti, 2008).

- Of the three SAT subsections, the writing section is the most highly predictive of first-year college performance.
- The best combination of predictors of first-year grade point average (FYGPA) is high school grade point average (HSGPA) and SAT scores.

Differential Validity and Prediction of the SAT

The College Board's research found similar patterns of differential validity and prediction by gender, race/ethnicity, and best language subgroups on the revised SAT as previous research found on earlier versions of the SAT (Mattern, Patterson, Shaw, Kobrin, and Barbuti, 2008).

For differential validity:

- The individual sections of the SAT and the combination of sections better predict first-year grade point average (FYGPA) for females than for males.
- High school grade point average is also more predictive of FYGPA for females than for males.
- Individual SAT sections are more predictive of FYGPA for white students than under-represented students.
- High school grade point average is also more predictive of FYGPA for white students than for underrepresented students.
- The combination of the three sections of the SAT is more predictive of FYGPA for white students than all students, except American Indian students. (The sample size for American Indians was very small.)
- Individual sections of the SAT as well as the combination of all three sections better predict FYGPA for students whose best language is English.
- High school grade point average is more predictive of FYGPA for students whose first language is English than for students whose first language is other than English.

For differential prediction:

- The individual sections of the SAT as well as the combination of all three sections under predict first year grade point average (FYGPA) for females and over predict FYGPA for males.
- High school grade point average (HSGPA) as well as the combination of high school grade point average and SAT score, under predict FYGPA for females, while over predicting that of males.
- FYGPAs of American Indian, African American, and Hispanic students are over predicted by all measures and combination of measures, with African Americans over predicted most.
- HSGPA results in the most differential prediction for most racial/ethnic groups; the combination of SAT and HSGPA results in the least differential prediction.
- Individual sections of the SAT as well as the combination of all three sections accurately predict FYGPA, while students whose best language is not English are under predicted by critical reading and writing and are accurately predicted by mathematics.
- For students whose best language is English and another language, the individual SAT sections as well as the combination of all three sections over predict FYGPA.

Scope and Limitations

In addition to being reliable indicators of students' preparation for college, aggregate SAT scores for a series of years can reveal trends in the academic preparation of students who take the test. Thus, this report includes SAT results for North Carolina's students in 2011 and trend scores for recent years, where possible.

Rankings or residual rankings are not used in this report in compliance with the College Board's *Guidelines on the Uses of College Board Test Scores and Related Data* and with professional standards for educational and psychological testing. The guidelines caution against the use of SAT scores in aggregate form as a single measure to rank or rate states, educational institutions, school systems, schools, or teachers. *A Note on the Use of Aggregate SAT Data* on page v provides details for why such uses are inappropriate.

"Relationships between test scores and other factors such as educational background, gender, race/ethnic background, parental education, and household income are complex and interdependent. These factors do not directly affect test performance; rather, they are associated with educational experiences both on tests such as the SAT Reasoning Test and in schoolwork" (College Board, 2008).

In this report, two types of total scores are indicated: Critical Reading+Mathematics (CR+M) and Critical Reading+Mathematics+Writing (CR+M+W). The CR+M total score is used for comparisons to historical SAT total scores prior to March 2005; the CR+M+W total score permits the inclusion of Writing in SAT total scores after March 2005.

This report presents SAT results for students scheduled to graduate in 2011 and represents students' most recent scores, regardless of when they took the test. Some results in this report reflect *public and non-public school students* in North Carolina and the United States, while others reflect only public school students. Distinctions between these types of results are indicated accordingly.

Special Notice

When reviewing 2011 SAT trend data, unadjusted scores for previous years may be marginally lower than those reported in fall 2010 due to the College Board's change in reporting conventions (SAT Trends, 2010). Prior to 2010, SAT trend data were reported for all students who took the test in high school through March of their senior year (when most students were expected to have taken the test). However, the College Board observed in 2010 that a significant segment of students were taking the test for the first time in May or June of their senior year, which it felt compelled to report. The SAT national release date was changed in 2010 from late August to mid-September to facilitate the inclusion of senior test-takers through May and June in the reporting cohort. As such, 2010 was used as the transition year and data were gathered for both cohorts: March and June, although only scores for students taking the test through March were reported in fall 2010 for comparability with previous year's trend data. In the 2011 Trend Report and the State Integrated Summaries, statewide and national scores for the June cohort were published for both 2010 and 2011. In this report, statewide trend data published for 2010 that included the June cohort are referred to as "adjusted scores." Trend data for schools and systems from 2007 to 2010 will be released at a later date.

Overall Performance (Public and Private Schools)

Note: The 2010 mean total SAT scores included in this report are marginally lower than those reported in the fall of 2010 because they have been adjusted to make them compatible with 2011 scores. For a fuller explanation, see the Special Notice in the Scope and Limitations section above.

North Carolina's mean total SAT score (1001) in 2011 lagged the previous year's score (1004) by three points, and the nation's score (1011) fell three points below the previous year's score (1015). In recent years, North Carolina's average yearly SAT gain has exceeded that of the nation. From 1989 to 2011, North Carolina's average yearly gain has been about 2.3 points, compared with about 0.2 points for the nation (see Figure 2).

The mean total SAT score (988) for the Southeast (Florida, Georgia, North Carolina, South Carolina, and Virginia) in 2011 fell ten point after four years of relatively flat scores. After trailing the Southeast by one point in 2001, North Carolina has led the Southeast since that time, scoring 13 points higher in 2011 (see Figure 1).

North Carolina's participation rate (67 percent) increased by three percentage points from the previous year. Among all states and the District of Columbia, North Carolina was tied for 16th highest with Vermont (see Table 11 in the Appendices). By comparison, the nation's rate (50 percent) increased three percentage points. Participation rates for the past four years are comparable because they were based on the same edition of the Western Interstate Commission for Higher Education (WICHE) enrollment projections (WICHE, 2008). Participation rates for years based on different projection editions are not comparable.

In North Carolina, the number of SAT takers increased by 4.4 percent in 2011 — from 59,507 test-takers in 2010 to 62,149 test-takers in 2011. The number of SAT takers in the nation increased by 3.1 percent — from 1,597,329 to 1,647,123 (The College Board, 2011).

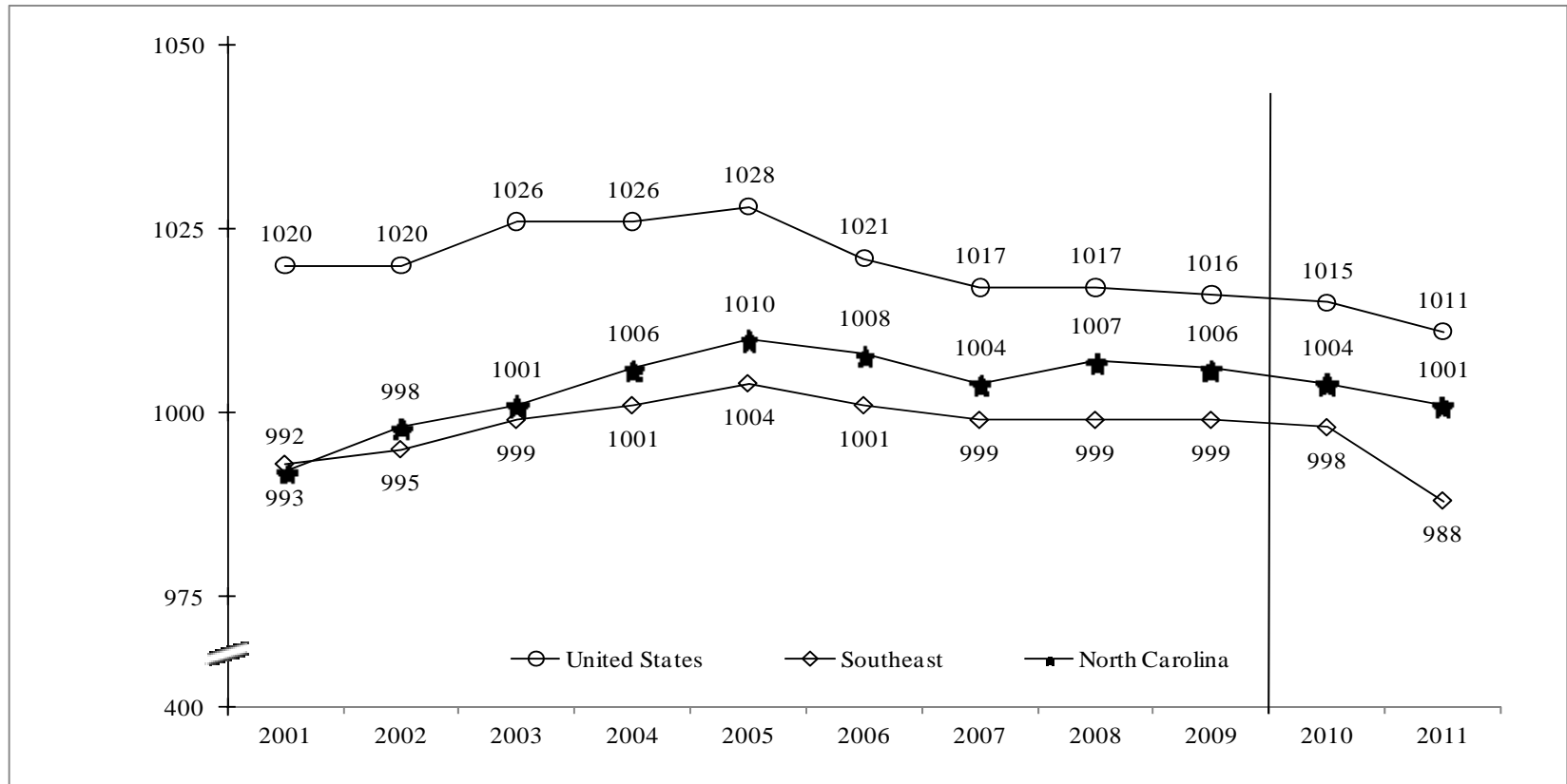
In 2011, North Carolina's mean total score (1001) was down three points from the previous year due to a two-point drop in critical reading (from 495 to 493) and a one point drop in mathematics (from 508 to 509) as shown in Tables 3 and 11 in the Appendices). The nation's mean total score fell from 1015 to 1011 due to a three-point drop in critical reading and a one-point drop in mathematics.

The gap between North Carolina's mean total score and the nation's score has narrowed from 53 points in 1990 to 10 points in 2011 (see Table 3 in the Appendices). Since 1972, the SAT score gap between North Carolina and the nation has narrowed by 73 points.

Among states with at least 10 percent of SAT takers, North Carolina (53 points) is first in SAT score gains from 1990 to 2011 (see Table 10). Among the "SAT States," (the 22 states with more than 50 percent SAT takers), North Carolina and New Hampshire are tied for third with the largest 10-year gain (9 points) in mathematics (see Table 11).

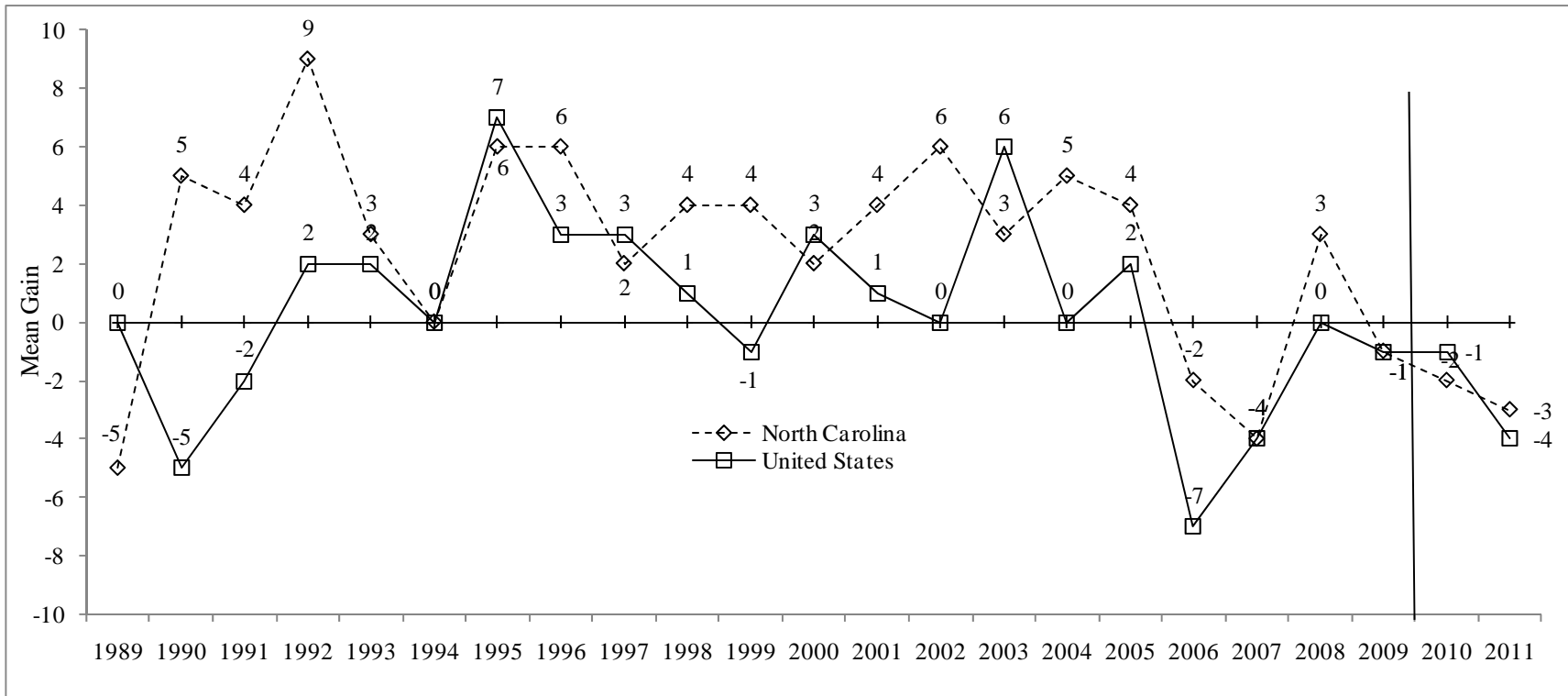
North Carolina's writing score (474), down two points from the previous year, trailed the nation's score (489) by 15 points as shown in Table 11. In critical reading, North Carolina's score (493), also down two points from the previous year, lagged the nation's score (497) by four points. The nation's

mathematics score (514) led North Carolina's score (508) by six points. North Carolina's grand total score (Critical Reading+Mathematics+Writing) was 1475, compared with 1500 for the nation (Table 9).



Note: Scores for the United States and North Carolina in 2010 and 2011 are based on cohort test-takers through June; scores for other years are based on test-takers through March. The scores for 2010 were adjusted. See [Special Notice](#) on Page 7.

Figure 1. Mean Total SAT Scores (Critical Reading + Mathematics) for the United States, the Southeast Region, and North Carolina, 2001-2011.



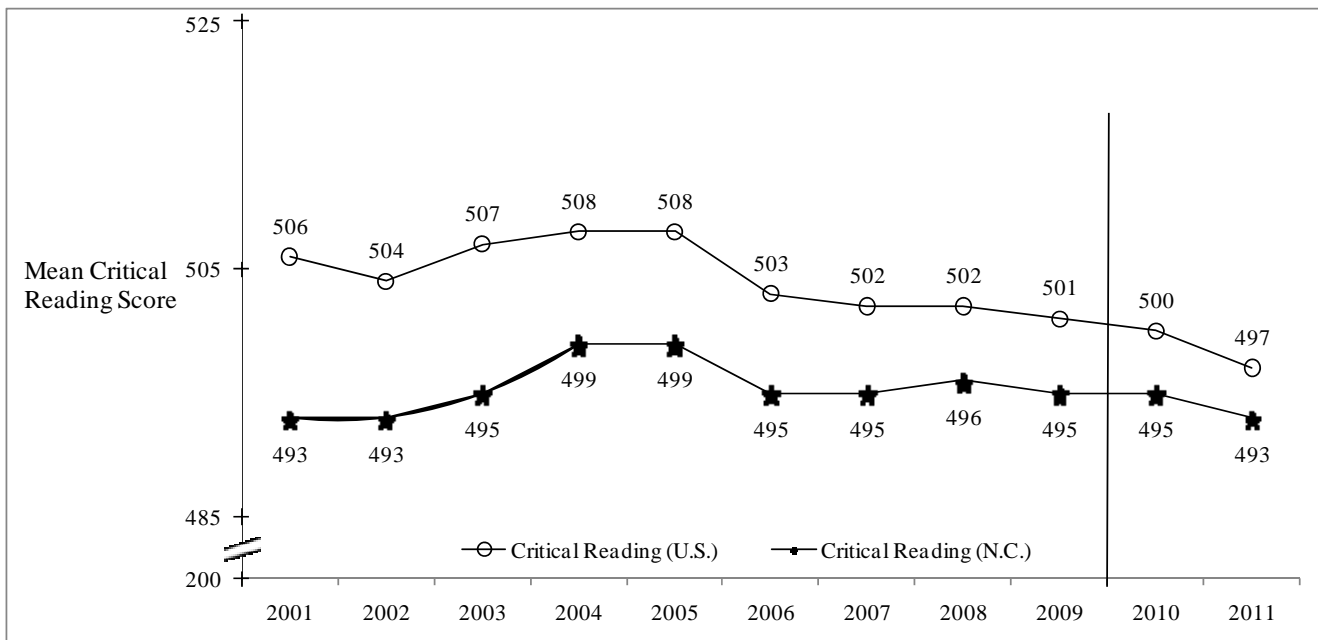
Note: Scores for 2010 and 2011 are based on cohort test-takers through June; scores for other years are based on test-takers through March. The scores for 2010 were adjusted. See [Special Notice](#) on Page 7.

Figure 2. Average Yearly SAT Score Gains for North Carolina and the United States, 1989-2011.

Critical Reading and Mathematics Scores

In previous years, North Carolina's critical reading and mathematics SAT scores have lagged the nation's scores, but the gaps have narrowed continually over the last decade. The gap in mathematics has closed more rapidly over the last decade (see Figures 3 and 4).

- North Carolina's critical reading score (493) fell two points in 2011, while the nation's score (497) dropped three points.
- The gap between North Carolina's critical reading score and the nation's score is four points (see Figure 3).

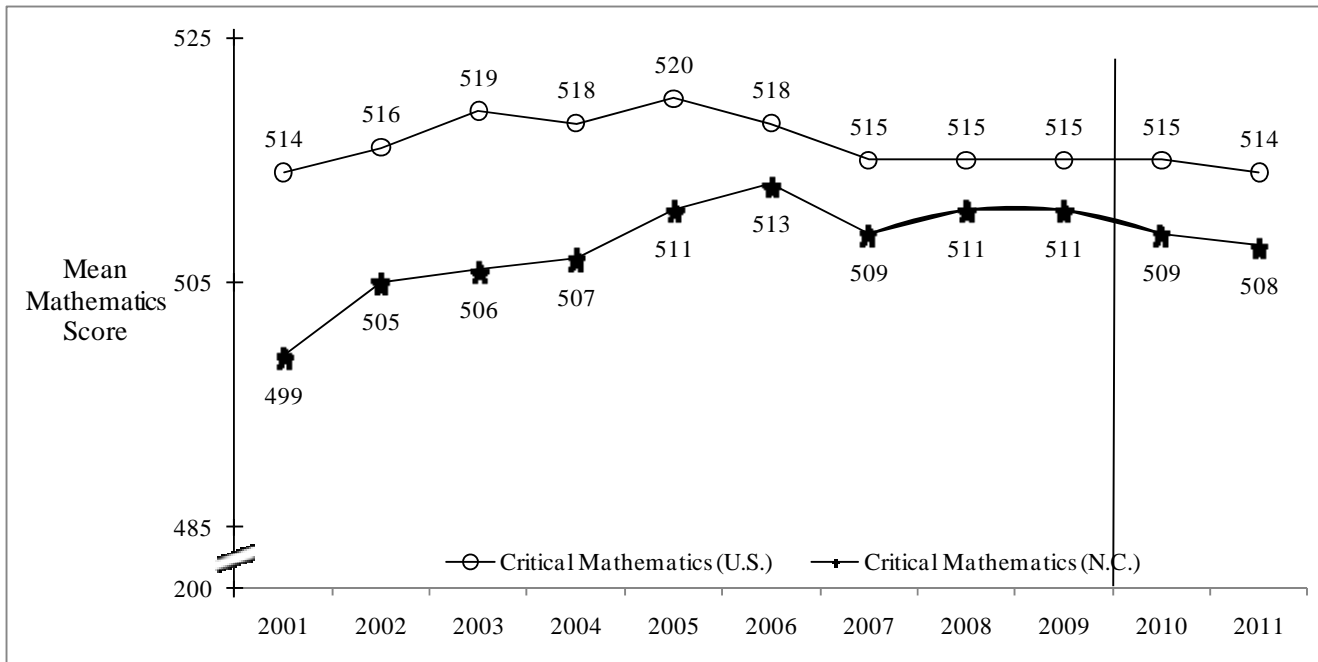


Note: Scores for 2010 and 2011 are based on cohort test-takers through June; scores for other years are based on test-takers through March. The scores for 2010 were adjusted. See [Special Notice](#) on Page 7.

Figure 3. Mean SAT Critical Reading Scores for North Carolina and the Nation, 2001-2011.

In mathematics, North Carolina has gained substantially on the nation from 2001 to 2011.

- North Carolina's score (508) was just six points lower than the nation's score (514) in 2011, compared with six points in 2010 (see Figure 4).
- The mathematics scores for North Carolina and the nation are down from the previous year.



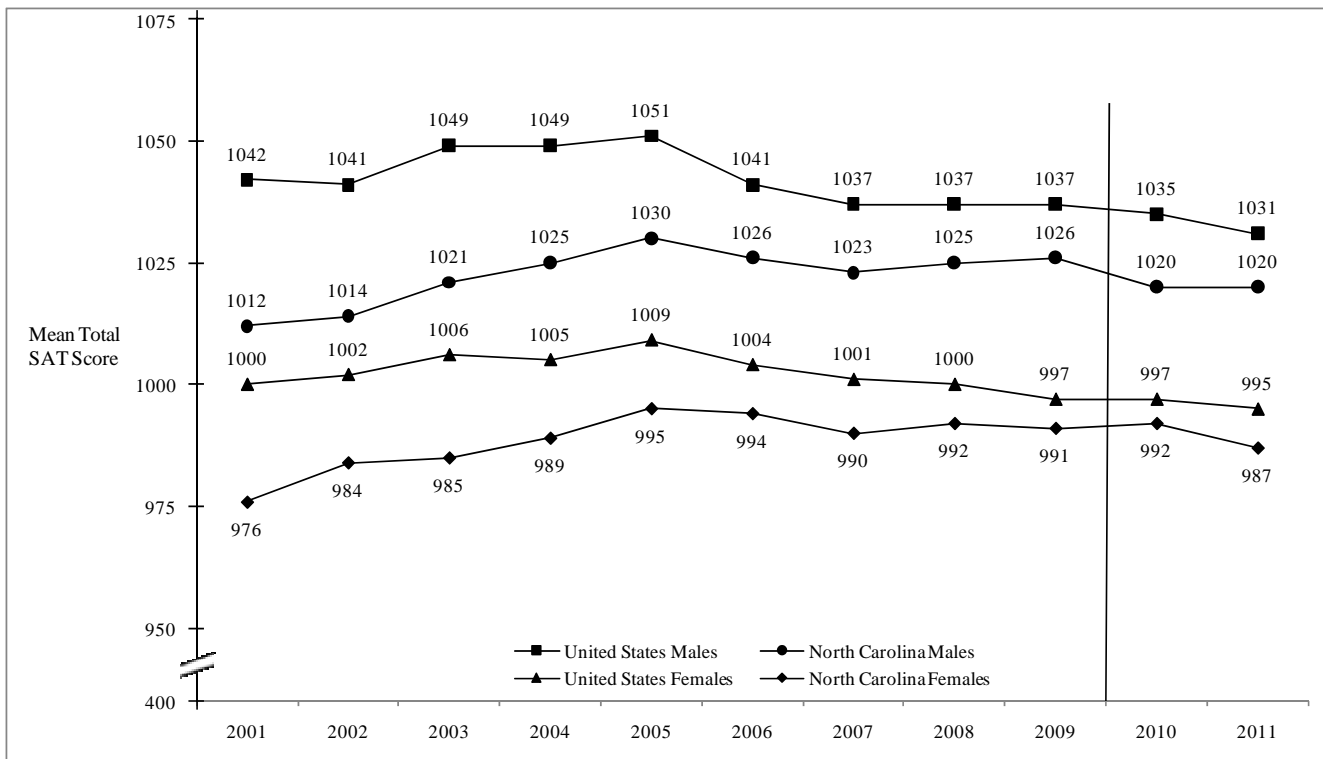
Note: Scores for 2010 and 2011 are based on cohort test-takers through June; scores for other years are based on test-takers through March. The scores for 2010 were adjusted. See [Special Notice](#) on Page 7.

Figure 4. Mean SAT Mathematics Scores for North Carolina and the Nation, 2001-2011.

Gender

Figure 5 shows mean total SAT scores for the United States and North Carolina by gender from 2001 to 2011. In past years, males in North Carolina and the United States have scored higher on the SAT than females, although females earn higher grades in high school and college (Vars and Bowen, 1998).

- The gap between mean total SAT scores for North Carolina’s males and females was 33 points in 2011, five points wider than it was the previous year.
- The gap between total mean SAT scores for the nation’s males and females was 36 points in 2011, two points narrower than the previous year.



Note: Scores for 2010 and 2011 are based on cohort test-takers through June; scores for other years are based on test-takers through March. The scores for 2010 were adjusted. See [Special Notice on Page 7](#).

Figure 5. Mean Total SAT Scores (Critical Reading + Mathematics) for the United States and North Carolina by Gender, 2001-2011.

While the gaps between total mean SAT scores for males and females in North Carolina and between males and female scores in the nation have not changed appreciably from 2001 to 2011, North Carolina’s males and females have narrowed the gap on their national counterparts (see Figure 5).

- The gap between the scores of North Carolina’s males and the nation’s males was 11 points in 2011, compared with 15 points the previous year.
- The gap between the scores of North Carolina’s females and the nation’s females was eight points in 2011, compared with only five points the previous year.

Table 2 displays mean critical reading and mathematics scores for males and females in North Carolina and the nation. Males have scored higher than females on the mathematics portion of the SAT since its inception in the early 1920’s (Wilder and Powell, 1989). However, only over the past three decades have males begun to consistently score higher than females in critical reading, although the differences are smaller than in mathematics.

- The average gap between male and female mathematics scores in North Carolina from 2001 to 2011 has been 29.0 points, compared with 34.3 points for the nation.
- The average gap between North Carolina’s male and female critical reading scores over the same period has been 4.4 points, about one point less than the average gap for the nation.

Table 2. Mean Critical Reading and Mathematics SAT Scores for North Carolina and the Nation by Gender, 2001-2011.

Year	SAT Critical Reading						SAT Mathematics					
	North Carolina			Nation			North Carolina			Nation		
	M	F	Gap ¹	M	F	Gap ²	M	F	Gap ¹	M	F	Gap ²
2001	497	490	7.0	509	502	7.0	515	486	29.0	533	498	35.0
2002	494	492	2.0	507	502	5.0	520	492	28.0	534	500	34.0
2003	499	492	7.0	512	503	9.0	522	493	29.0	537	503	34.0
2004	502	496	6.0	512	504	8.0	523	493	30.0	537	501	36.0
2005	503	497	6.0	513	505	8.0	527	498	29.0	538	504	34.0
2006	497	494	3.0	505	502	3.0	529	500	29.0	536	502	34.0
2007	497	494	3.0	504	502	2.0	526	496	30.0	533	499	34.0
2008	498	494	4.0	504	500	4.0	527	498	29.0	533	500	33.0
2009	498	493	5.0	503	498	5.0	528	498	30.0	534	499	35.0
2010	496	495	1.0	502	498	4.0	524	497	27.0	533	499	34.0
2011	497	491	6.0	500	495	5.0	523	496	27.0	531	500	31.0
Mean	498	493	4.4	507	502	5.5	524	495	29.0	535	501	34.3

¹North Carolina's mean score for males (M) minus North Carolina's mean score for females (F).

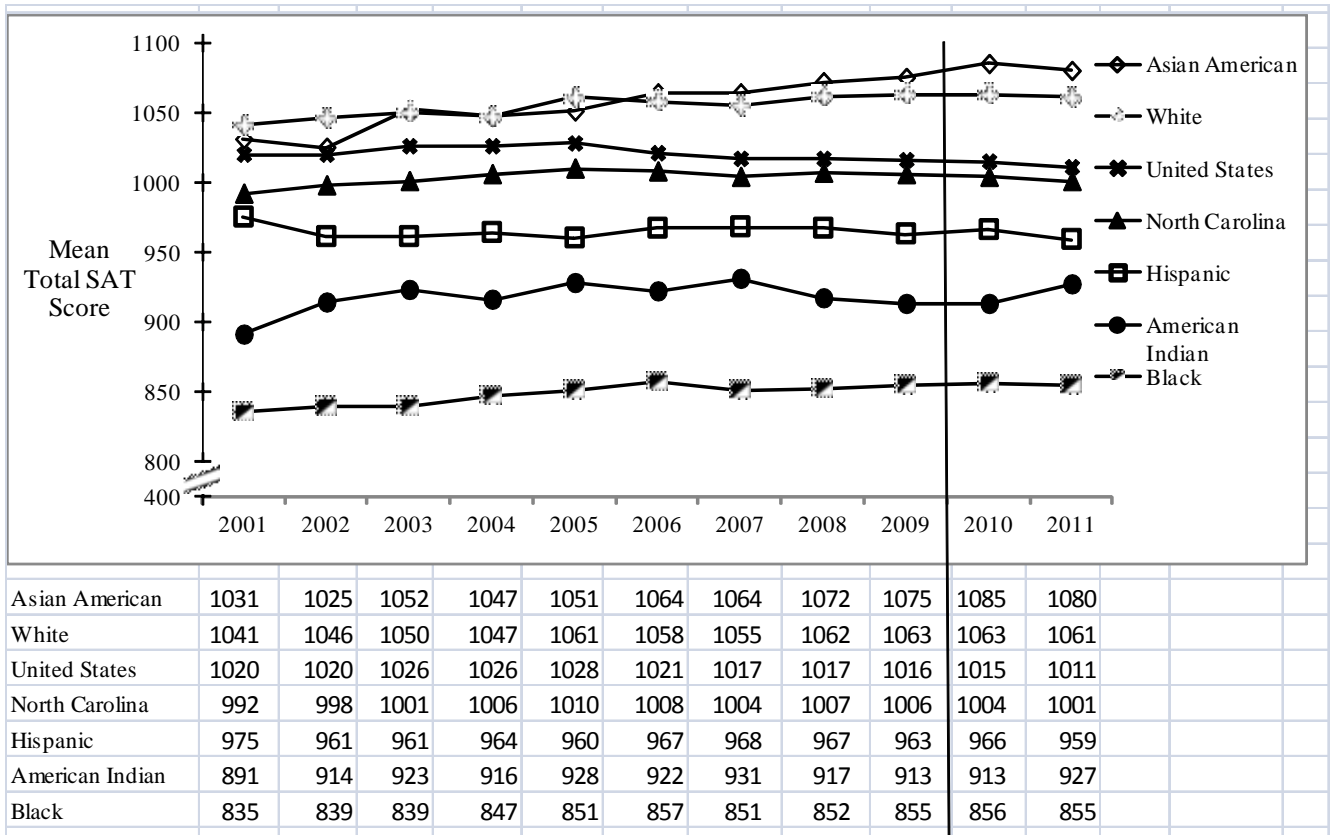
²Nation's mean score for males (M) minus nation's mean score for females (F).

Note: Scores for 2010 and 2011 are based on cohort test-takers through June; scores for other years are based on test-takers through March. The scores for 2010 were adjusted. See Special Notice on Page 7.

Race/Ethnicity

Historically, White and Asian American students have attained higher SAT scores than other racial/ethnic groups in North Carolina, while Hispanics, American Indians, and Blacks have scored lower. Figure 6 shows mean total SAT scores for North Carolina by race/ethnicity from 2001 to 2011, and Table 6 shows the performance of racial/ethnic groups, and “Other”, and “No Response” categories from 2007 to 2011.

- In 2011, the only racial/ethnic group that improved scores from the previous year was American Indians; all other racial/ethnic groups scored lower (see Figure 6 and Table 6).
- For the sixth consecutive year since 2006, Asians (1080) scored higher than other racial/ethnic groups, followed by Whites (1061), Hispanics (959), American Indians (927), and Black students (855) [see Figure 6].
- North Carolina’s Asian students (1080) and White students (1061) were the only racial/ethnic groups to exceed the United States average (1011) in 2011 (Figure 6).
- Among racial/ethnic groups in North Carolina in 2011, “Other” students (11.7%), Asian students (9.5%) and Hispanic students (8.5%) had the largest increase in test-takers from the previous year, followed by Black students (5.8%), White students (3.1%), and American Indians (-2.0%) (The College Board, 2011).
- In 2011, Hispanic students and “No Response” students were the only racial/ethnic groups to score higher than their national counterparts, with Hispanics 45 points higher and the “No Response” group 16 points higher (see Table 6).
- North Carolina’s Black students have historically scored lower on the SAT than other racial/ethnic groups.
- In 2011, Black students scored 855, one point lower than the previous year’s score. This score was 225 points lower than the score for Asian students (1080), 206 points lower than the score for White students (1061), 104 points lower than the score for Hispanic students (959), and 72 points lower than the score for American Indian students (927) (see Tables 5 and 6).



Note: Scores for 2010 and 2011 are based on cohort test-takers through June; scores for other years are based on test-takers through March. The scores for 2010 were adjusted. See Special Notice on Page 7.

Figure 6. Mean Total SAT Scores (Critical Reading + Mathematics) for North Carolina by Race/Ethnicity, 2001-2011.

- Nationally, Asian American students (1112) attained the highest mean total SAT score among racial/ethnic groups in 2011 (see Table 6).
- White students (1063) had the second highest score nationally, followed by “Other” (1010), American Indians (972, Hispanics (914) and Blacks (855).
- Nationally, no racial/ethnic groups improved their scores from the previous year, while the scores for Asian and Black students did not change.
- All subgroups in the nation attained higher SAT scores in 2011 than their North Carolina counterparts, except North Carolina’s Hispanics and “No Responders” who scored 45 points and 16 points higher, respectively (see Table 6) than their national counterparts. The score (855) for black students was the same in North Carolina and the nation.
- Among the racial/ethnic groups, the largest margin between the nation’s score and North Carolina’s score was attained by Hispanic students (45 points) [see Figure 7 and Table 6].

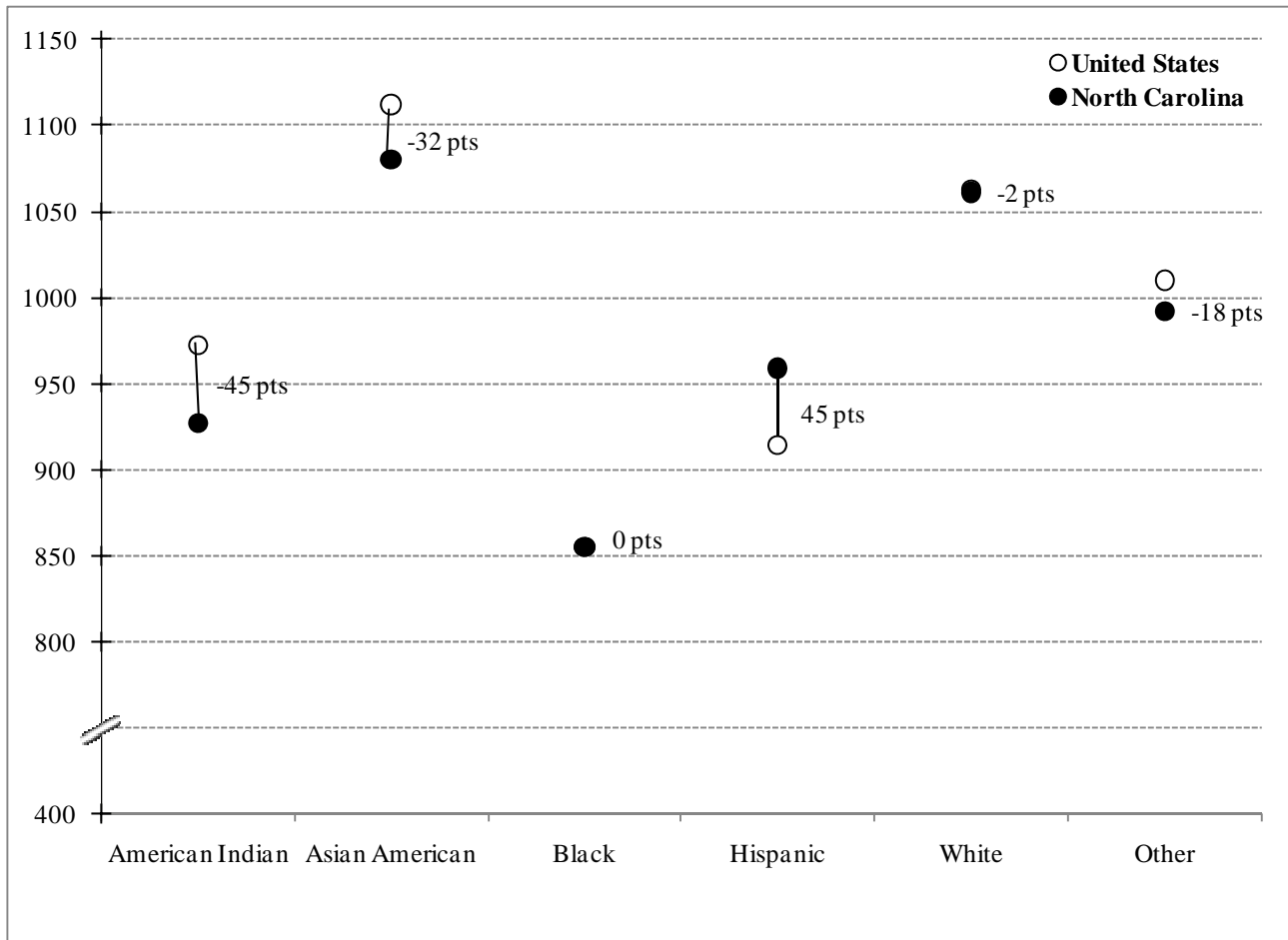


Figure 7. Mean Total SAT Scores (Critical Reading + Mathematics) for North Carolina and the United States by Race/Ethnicity, 2010-2011.

Race/Ethnicity by Gender

Figure 8 shows mean SAT critical reading scores by race/ethnicity and gender in 2011.

- American Indian females and Black females were the only subgroups scoring higher than their male counterparts.
- American Indian females (456) scored five points higher than American Indian males (451) and black females (423) scored four points higher than black males (419).
- Black males and females scored notably lower than other subgroups in critical reading.
- The average difference between male and female performances in critical reading across racial/ethnic groups was six points.

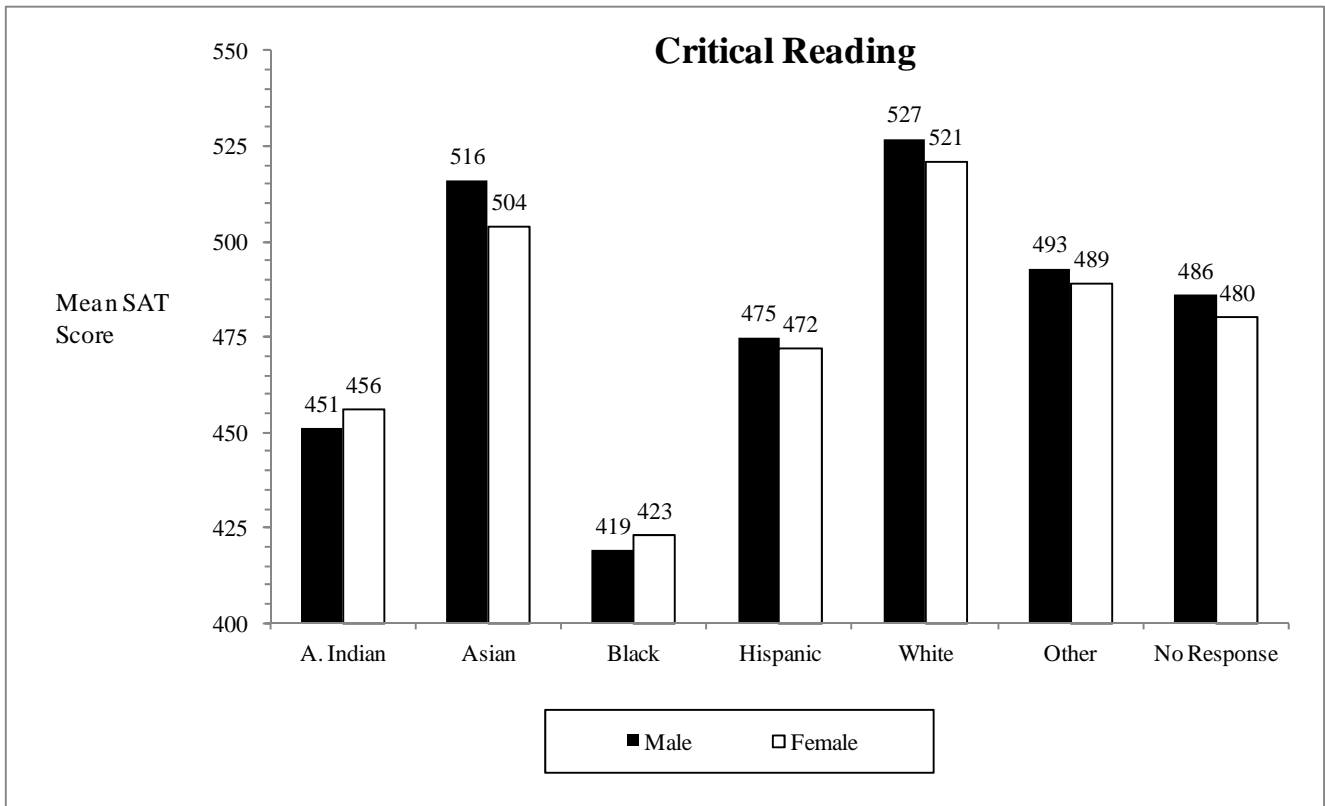


Figure 8. Mean SAT Scores in Critical Reading for North Carolina’s Racial/Ethnic Groups by Gender, 2010-2011.

Figure 9 shows mean SAT mathematics scores by race/ethnicity and gender in 2011.

- Males had higher mathematics scores than females across all subgroups (see Figure 9).
- The smallest differences in gender were observed among Black students, with males (440) scoring 10 points higher than females (430).
- Asian males and females scored notably higher in mathematics than other subgroups.
- Mathematics scores for Black male and female students were notably lower than those of other subgroups.
- The mean difference between male and female performances in mathematics across racial/ethnic groups was about 25 points.

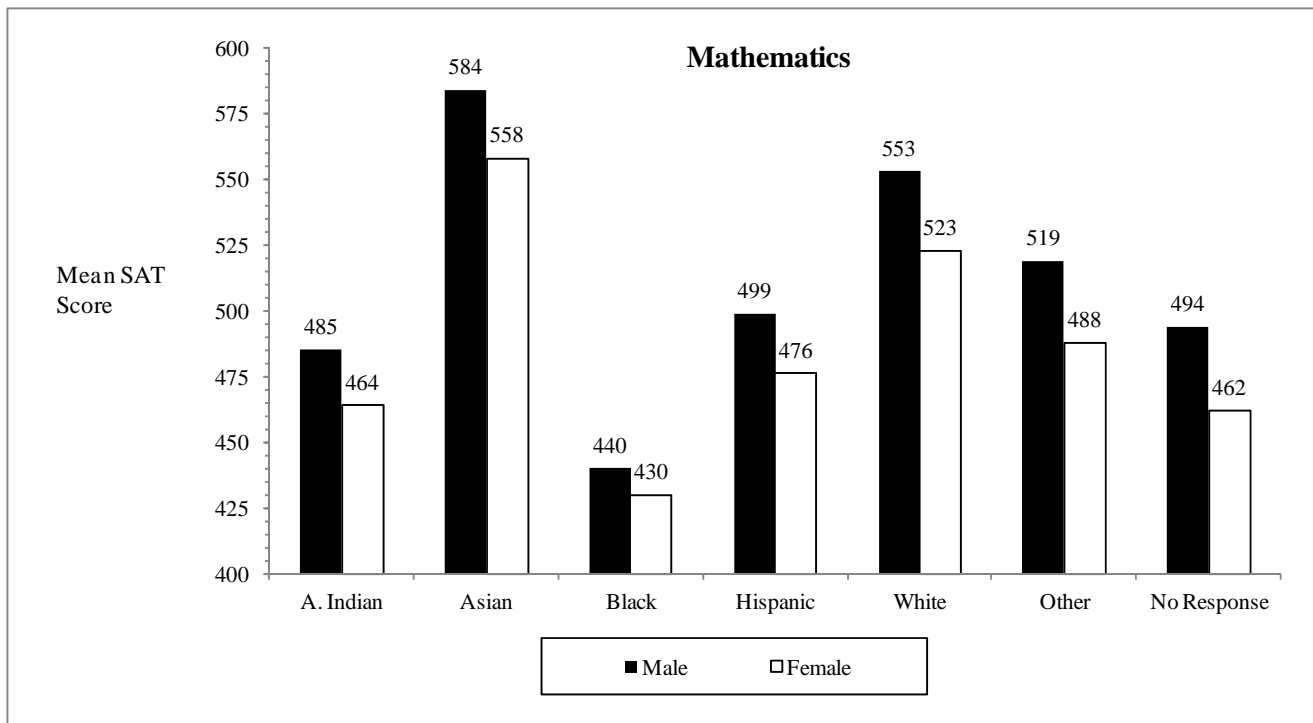


Figure 9. Mean SAT Scores in Mathematics for North Carolina’s Racial/Ethnic Groups by Gender, 2010-2011.

Figure 10 shows mean SAT writing scores by race/ethnicity and gender in 2011. In contrast to mathematics, females scored higher in writing than males across all subgroups (see Figure 10).

- White females (512) scored higher in writing than other racial/ethnic subgroups, followed closely by Asian females (510).
- The mean differences between male and female performance in writing was about 16 points.
- Black males and females scored lowest in writing among the subgroups.
- The largest difference between male and female performance in writing was about 26 points for American Indian females (443) and males (417).

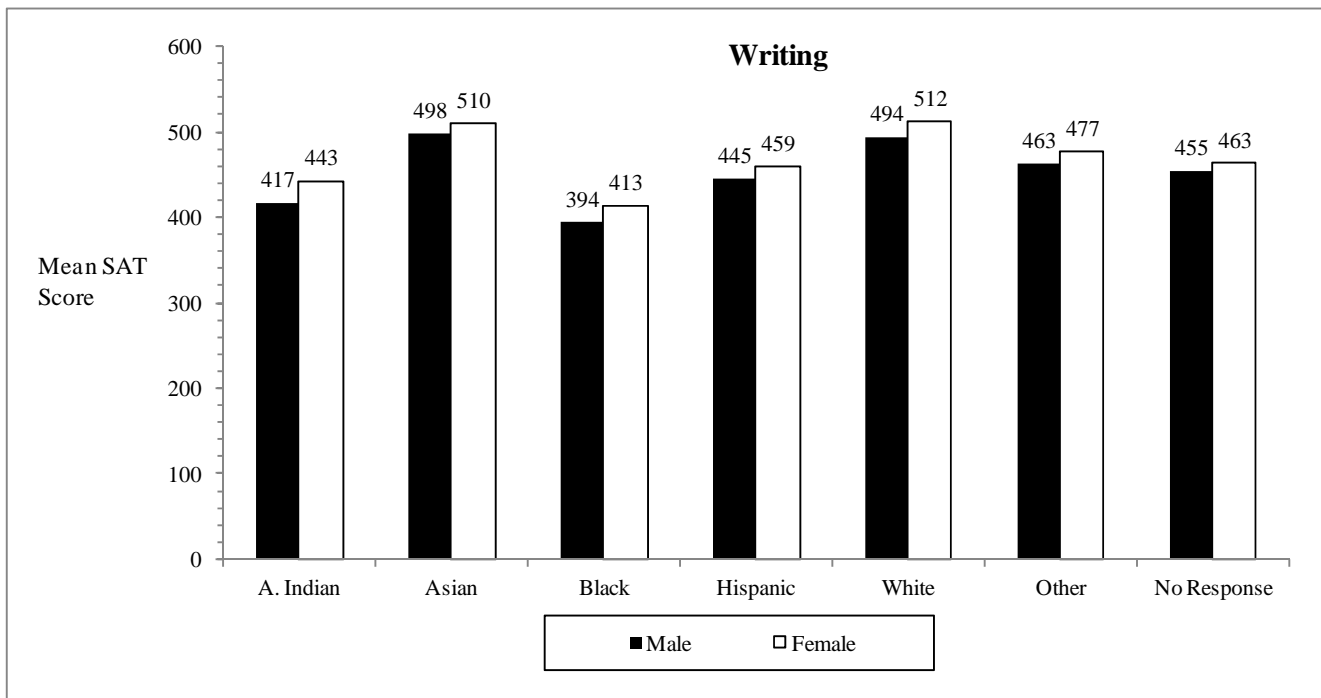


Figure 10. Mean SAT Scores in Writing for North Carolina’s Racial/Ethnic Groups by Gender, 2010-2011.

Family Income

Figure 11 shows mean total SAT scores by family income for North Carolina and the nation in 2010-2011. For the majority of income categories reported by the College Board, differences in scores for North Carolina and the nation were similar.

- The nation’s students outscored North Carolina’s students across all family income categories, with the largest difference (19 points) in the less than \$20,000 category.
- At the upper income categories between \$60,000 and \$200,000, students in the nation outscored students in North Carolina on the average by about five points
- As family income increased, mean total SAT scores increased in North Carolina and the nation.
- The largest disparity between students’ scores in the nation and students’ scores in North Carolina was observed at the extreme income categories: 19 points at the less than \$20,000 category and 11 points at the greater than \$200,000 category.

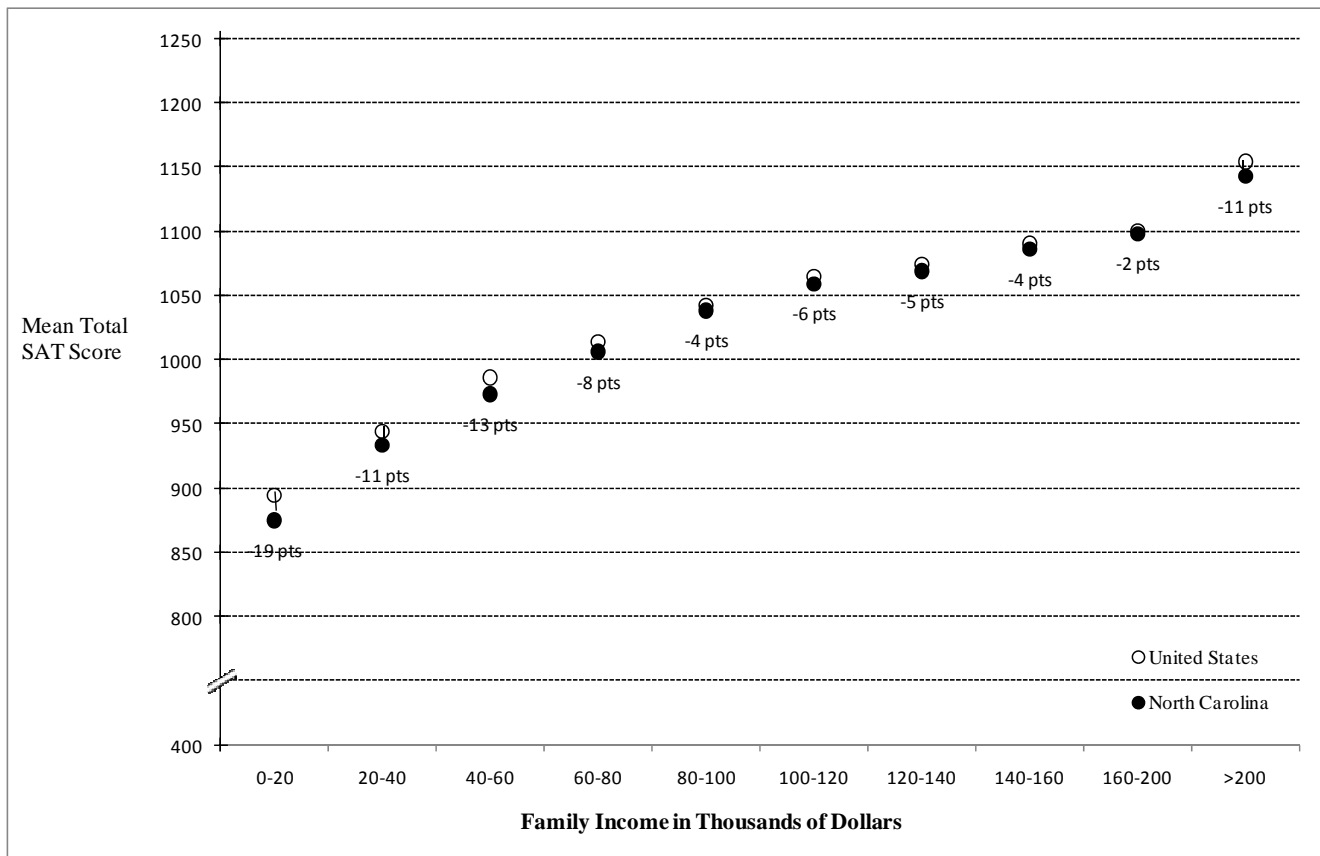
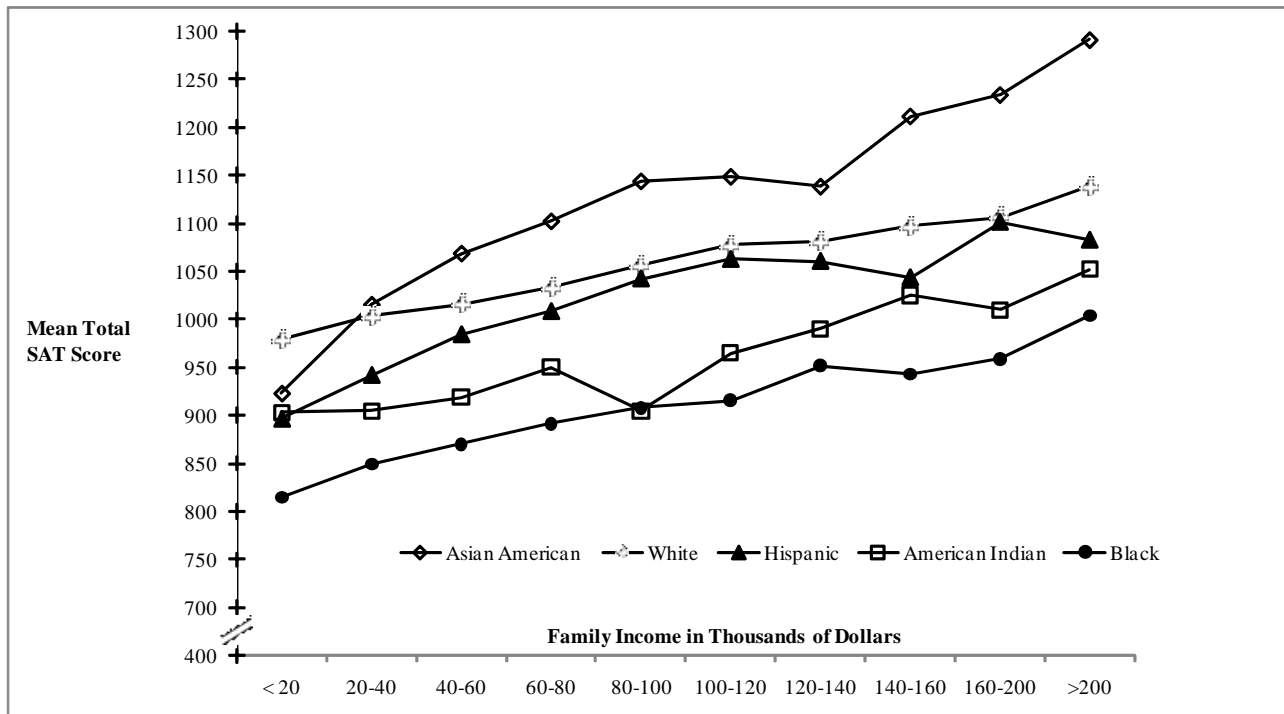


Figure 11. Mean Total SAT Scores (Critical Reading + Mathematics) for Students in North Carolina and the Nation by Family Income, 2010-2011.

Among racial/ethnic groups, North Carolina’s mean total SAT scores increased as family income increased in 2011 (see Figure 12).

- Asian students who reported an income levels between \$20,000 and \$40,000 scored eleven points higher than Black students who reported family incomes of greater than \$200,000 per annum.
- Compared to previous years, SAT performance as functions of race/ethnicity and family income appear to be leveling off, especially for Black students. The performance of Black and American Indian more closely parallel the performance of White and Asian students.
- The performance of Black students and White students were more uniform across income categories than that of other racial/ethnic groups.

Despite strong evidence in the research literature that parental income is positively correlated with student achievement, these data suggest that there are other factors that impact student achievement. It should also be pointed out that sample sizes for American Indian and Hispanic students are very small at the higher income categories.



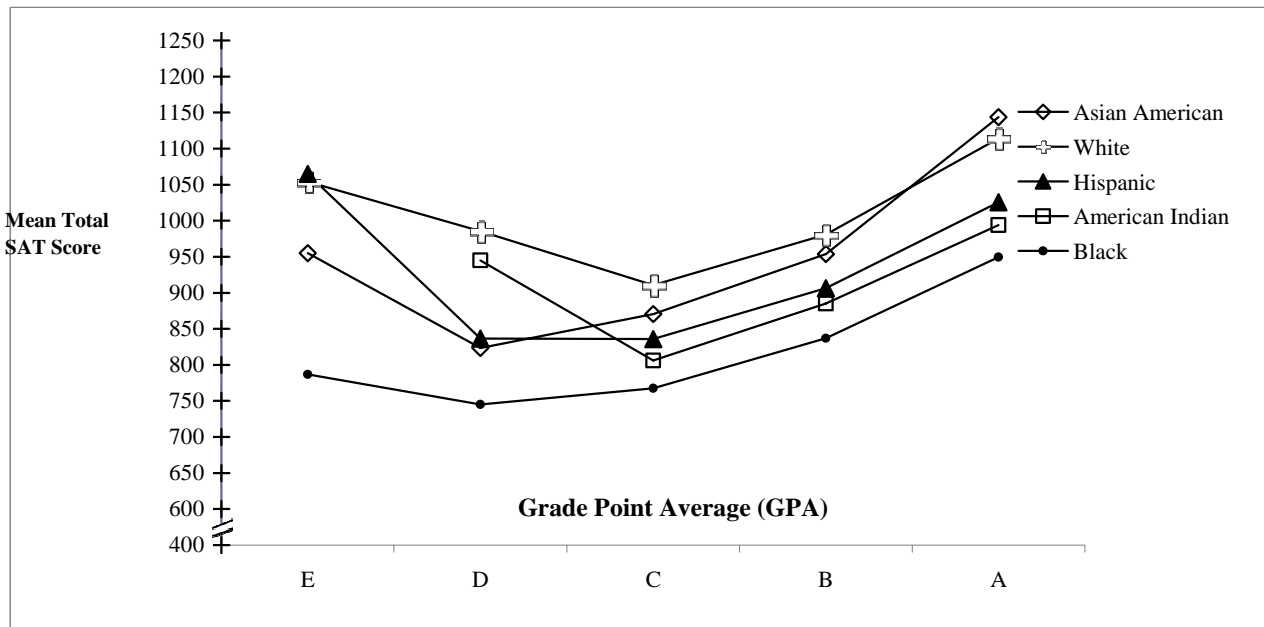
Asian American	923	1015	1069	1102	1144	1149	1138	1212	1234	1291
White	979	1003	1016	1033	1056	1077	1080	1097	1106	1138
Hispanic	896	942	984	1008	1042	1062	1060	1043	1101	1082
American Indian	903	904	919	950	905	965	990	1025	1010	1052
Black	815	849	870	891	908	916	952	943	959	1004

Figure 12. Mean Total SAT Scores (Critical Reading + Mathematics) for North Carolina by Family Income and Racial/Ethnic Group, 2010-2011.

Grade Point Average (GPA)

Figure 13 shows mean total SAT scores by grade point average and racial/ethnic group for public school students in 2011.

- As self-reported GPA increased, the SAT score gap between white and black students increased from 168 points in the “E” range to 194 points in the “A” range.
- The relationship between GPA and SAT scores was linear for all racial/ethnic, especially in the GPA range from “C” to “A”. This trend supports the research finding that high school GPA and SAT scores are the best predictors of first-year college performance.
- Scores in the “E” range suggested a curvilinear relationship between mean total SAT score and income, with scores in the “E” range being higher than scores in the “D” and “C” ranges.
- Generally, as grade point average increased, mean total SAT scores increased.



Asian American	955	823	871	954	1144
White	1054	986	911	981	1114
Hispanic	1065	837	836	906	1025
American Indian	*	945	806	885	994
Black	787	745	768	837	950

Figure 13. Mean Total SAT Scores (Critical Reading + Mathematics) and Self-Reported Grade Point Average for Public School Racial/Ethnic Groups in North Carolina, 2010-2011.

Research has shown that a composite of SAT scores and high school GPA together predict first-year college grades. The ‘predictive validity’ is approximately 0.61 (The College Board, 2008). Hence, one would expect SAT scores and high school grades to be strongly associated.

Figure 14 shows mean total SAT scores and self-reported grade point averages for male and female public school students in North Carolina in 2011.

- Male students with higher GPAs attained higher SAT scores than their female counterparts.
- At the “A”, “B”, and “C” levels, males outscored females by 51 points, 52 points, and 37 points, respectively.
- At the “E” level, females scored higher than males by 17 points.
- Males and females who reported “E” grade point averages scored over 100 points higher than males and females who reported “C” and “D” grade point averages. This finding raises suspicion about self-reported student data.

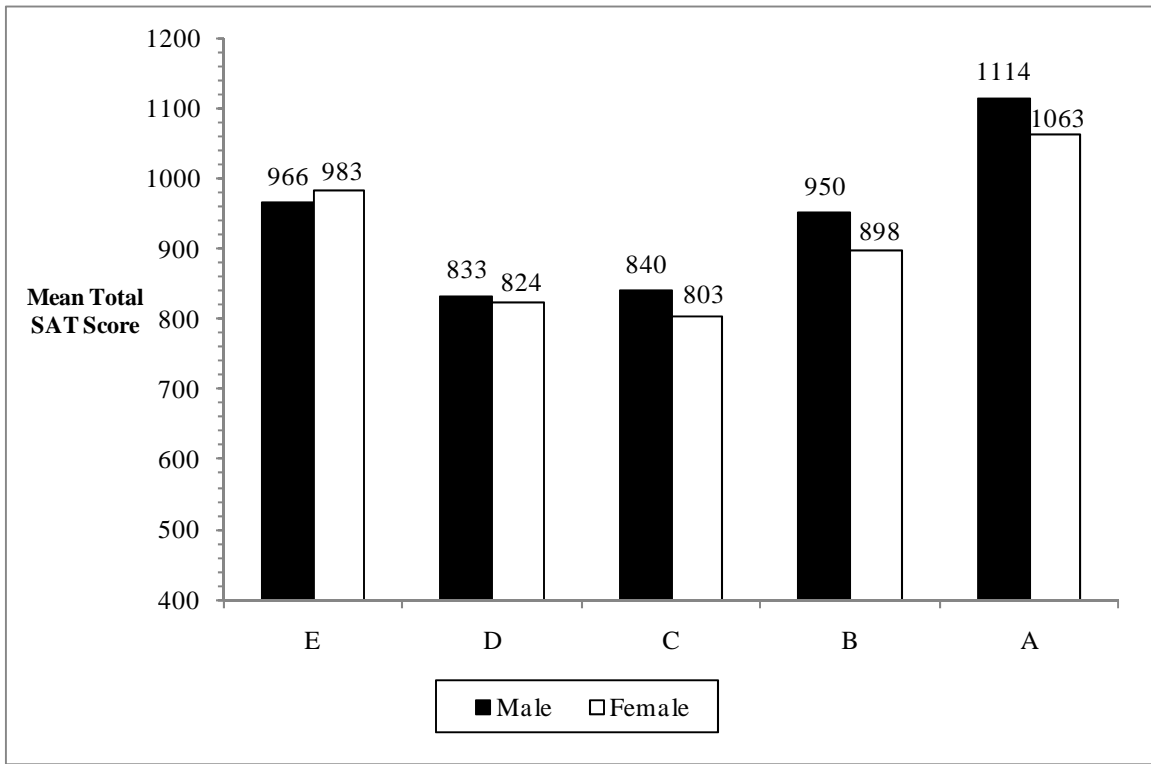


Figure 14. Mean Total SAT Scores (Critical Reading + Mathematics) and Grade Point Averages (GPA) for North Carolina’s Public School Male and Female Students, 2010-2011.

North Carolina and the University of North Carolina System

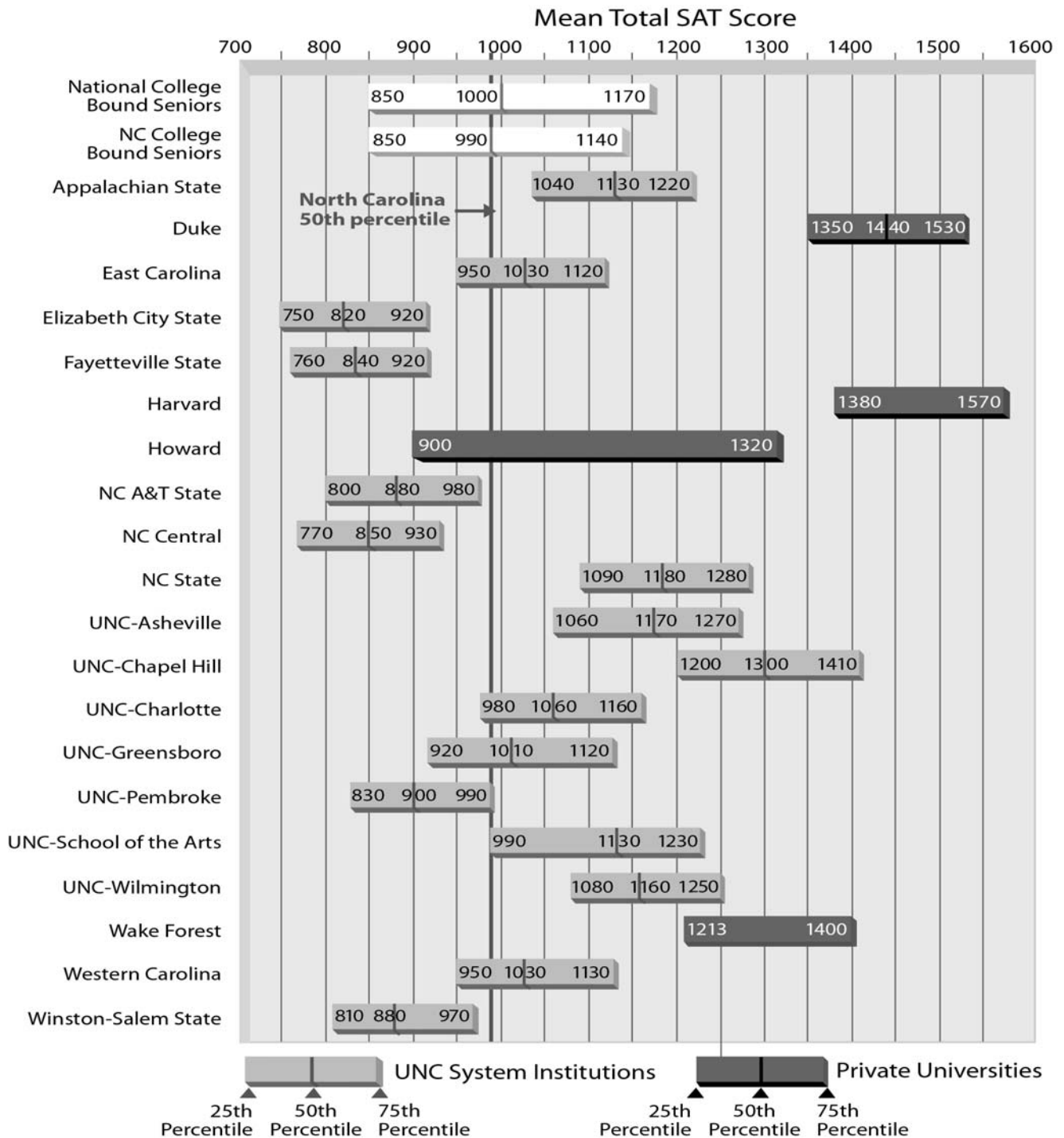
Historically, mean total SAT scores for freshmen entering the University of North Carolina System each year have been higher than those for North Carolina's graduating seniors (The University of North Carolina, 2011).

The mean total SAT score (1001) for North Carolina's college-bound seniors in 2011 was 84 points lower than the score (1085) for freshmen entering the University of North Carolina system in 2010. [SAT scores for the University of North Carolina System in 2011 were not available for inclusion in this report.] The average total SAT score for freshmen entering the University of North Carolina System from 2000 to 2010 has been 1078, while the average for North Carolina's graduating seniors (1003) has been 75 points lower during the same period. This trend suggests that many of North Carolina's students who do not perform well on the SAT do not enter the University of North Carolina System. These students may elect other post-secondary options, which might include colleges and universities with lower SAT requirements, community college, military service, or full-time employment.

Schools within the University of North Carolina System serve a wide variety of student abilities as reflected in the mean total SAT scores of their entering freshmen. In 2010, mean total scores ranged from 841 at Elizabeth City State University to 1304 at the University of North Carolina at Chapel Hill (The University of North Carolina, 2010).

Figure 15 shows the range of mean total SAT scores between the 25th and 75th percentiles of North Carolina's college-bound seniors, the nation's college-bound seniors, entering freshmen at the University of North Carolina system institutions, and other selected institutions (Harvard and Howard Universities). All UNC System scores are based on 2010 results; scores for Harvard and Howard Universities are based on 2009 results due to the unavailability of more recent scores. The bands in the figure show the range in which the middle half of the students scored — 25 percent of students scored at or below the lower end of the band and 25 percent scored at or above the upper end of the band.

The figure also shows that each of the University of North Carolina system institutions serves some students who score in the middle 50 percent of college-bound seniors in North Carolina and the nation. Duke, Wake Forest, the University of North Carolina and Harvard Universities are more likely to serve students who score in the top 25 percent of 2011 college-bound seniors in North Carolina and the nation and less likely to serve students who score in the lower 50 percent. On the other hand, Howard University, recognized as one of the elite Historically Black Colleges and Universities (HBCUs), is unique in that it serves a diverse range of student abilities and might serve students in the upper 75 percent of 2011 college-bound seniors in North Carolina and the nation. Howard University is the only HBCU that might serve students in the top quartile of North Carolina's college-bound seniors (see Figure 15).



Note: The 25th and 75th percentiles for Howard and Harvard University's entering freshmen are based on 2009 data.
 Source: The College Board (2011) *Student Achievement Report 2010-11 - North Carolina Schools*. Atlanta: Southern Regional Office. The University of North Carolina (2011). Averages and Quartiles of SAT Scores of Entering Freshmen in the University of North Carolina, Fall 2010. Statistical Abstract of Higher Education in North Carolina, 2010-2011.

Figure 15. The 25th, 50th, and 75th Percentiles of SAT Total Scores (Critical Reading + Mathematics) for National College-Bound Seniors (2011), North Carolina's College-Bound Seniors (2011), Entering Freshmen at Institutions of the University of North Carolina System, and Selected Private Universities (Fall 2010).

North Carolina's School Systems and Schools

Among states, the higher the percentage of students taking the SAT (participation rate), the lower the average SAT scores (The College Board, 2009). While this is true for states (see Figure 16) where there is a -0.88 correlation between mean total SAT scores and participation rates, the opposite association is observed for public schools in North Carolina (see Figure 17). In 2011, the Pearson correlation between the percent of students taking the SAT and the mean total SAT score for *public schools* was 0.37. These correlations suggest that participation rate is a lesser factor in predicting SAT scores for public school systems and public schools in North Carolina than for states.

In view of the above correlations, schools and school systems in North Carolina should exercise caution when attributing decreases or increases in mean SAT scores to changes in participation rate. Interpretations of fluctuations in SAT scores at a particular school or system or between schools and systems should take into account that SAT scores are influenced by multiple factors. Among such factors are course-taking patterns, curriculum content, course standards, parental education, and family income. It is also important to recognize that about 50% of all schools and school systems in the nation have changes in their mean critical reading or math SAT scores of plus or minus 10 points from year to year (see Table 1).

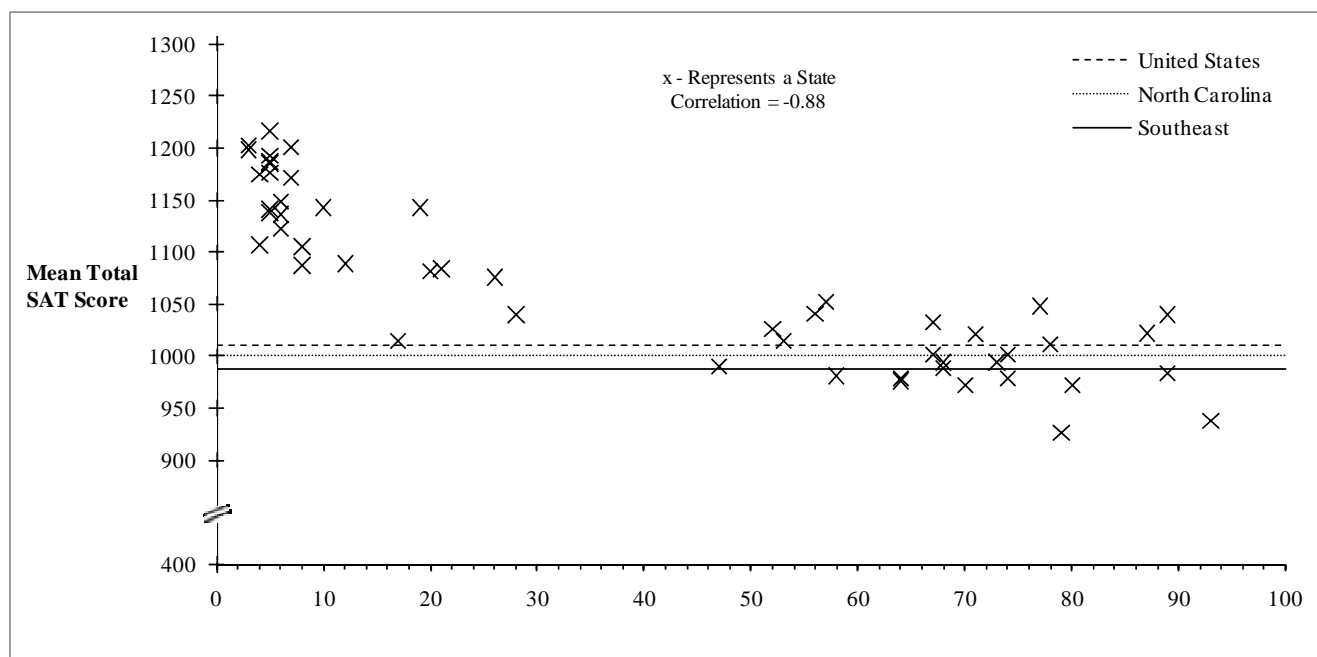


Figure 16. Scatter Plot of Mean Total SAT Scores (Critical Reading + Mathematics) by Percent of Students Tested for all States, 2010-2011.

Table 7 provides the critical reading scores, mathematics scores, writing scores, participation rates, Sub-Total Scores, and Grand Total Scores for each public school system and school in North Carolina for 2011. The traditional three-year trend is not being provided at this time for school systems and schools. Trend data will be provided after the College Board releases the adjusted data for past cohort years, which includes all students who tested through June. See the [Special Notice](#) in the Scope and

Limitations section at the bottom of Page 7 for a fuller explanation. The link for the Excel version of Table 7 is: <http://www.ncpublicschools.org/accountability/reporting/sat>.

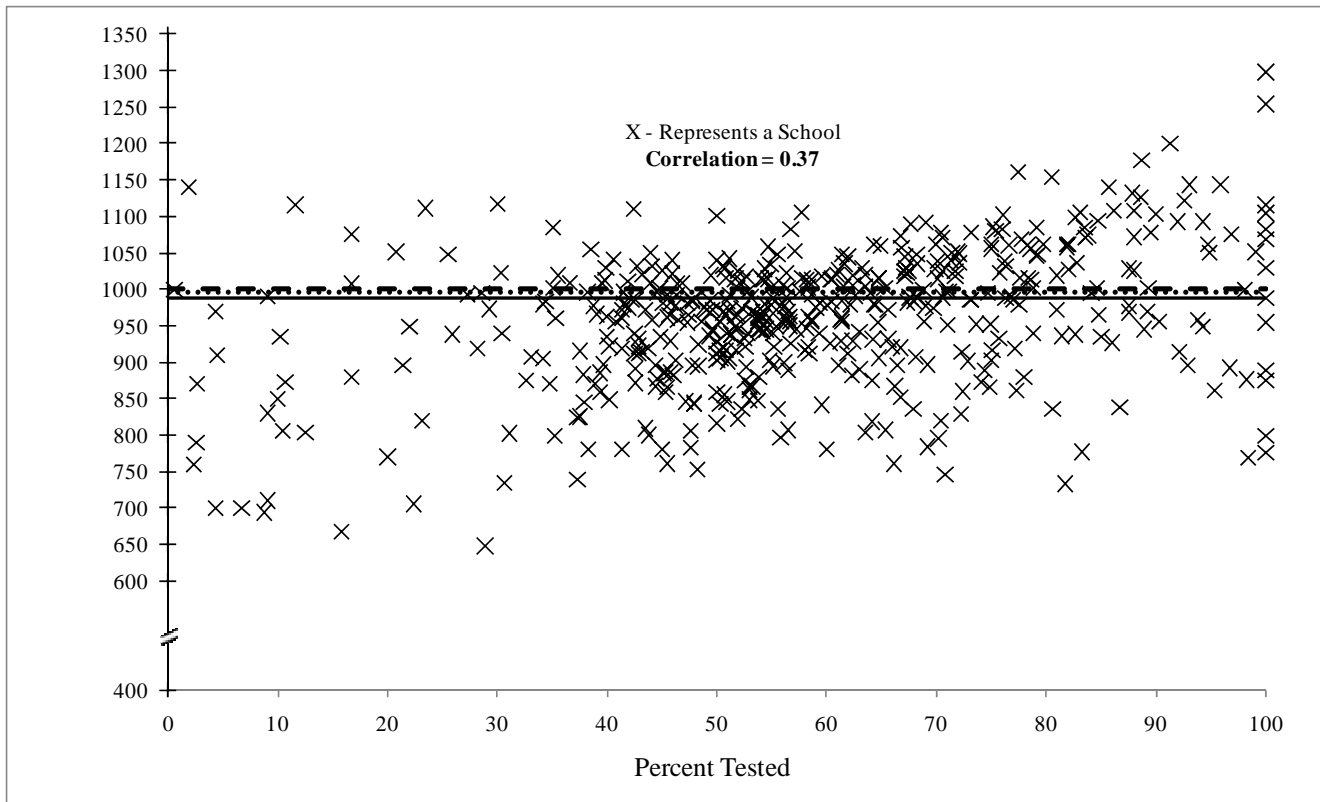
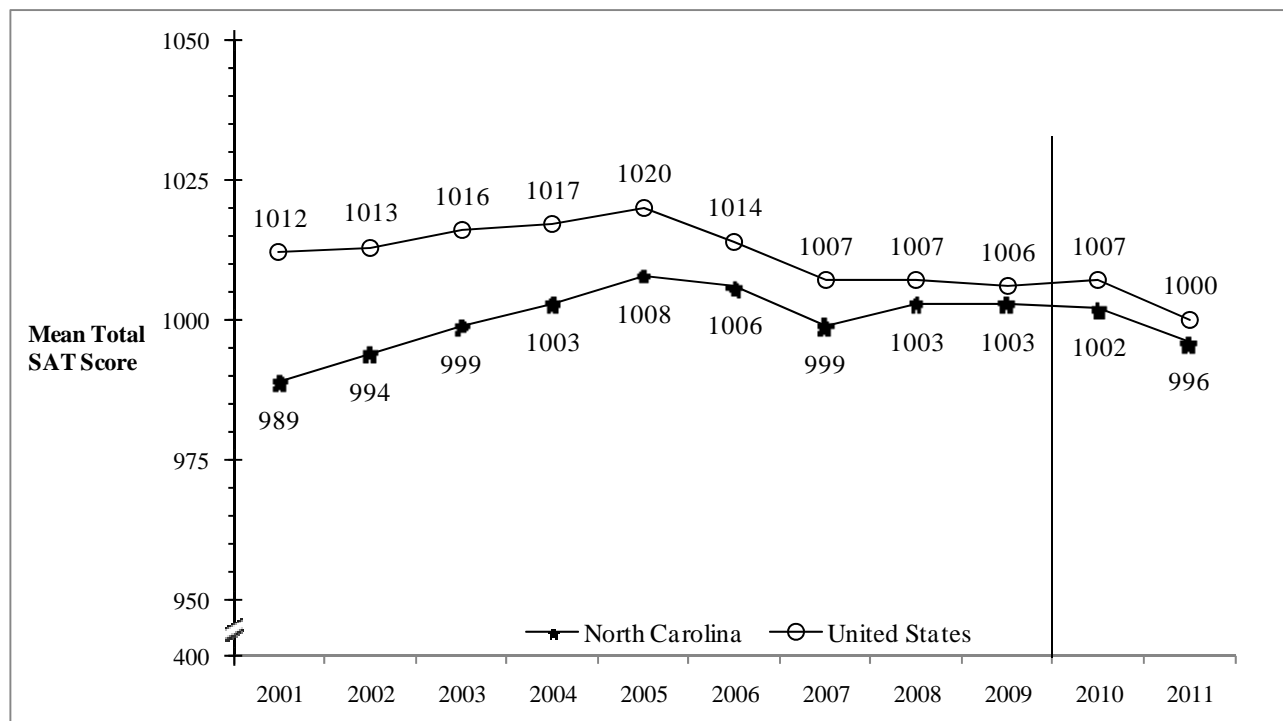


Figure 17. Scatter Plot of Mean Total SAT Scores (Critical Reading + Mathematics) by Percent of Students Tested for North Carolina Public High Schools, 2010-2011

Public Schools

Mean total SAT scores for North Carolina’s public schools have lagged those of public schools in the nation (see Figure 18). However, in recent years, North Carolina’s public schools have been improving at a faster rate than those in the nation.

- In 2011, North Carolina had 58,268 public school test-takers, a 10.0 percent increase from the previous year.
- With scores of 489 in critical reading and 507 in mathematics in 2011, North Carolina’s public school score (1996) fell six points from the previous year.
- The nation’s mean total SAT score (1000) decreased seven points from the previous year, with 494 in critical reading and 506 in mathematics (see Table 12 in the Appendices).
- The number of public school SAT takers in the nation (1,267,239) increased by 10.9 percent from the previous year (The College Board, 2011).



Note: Scores for 2010 and 2011 are based on cohort test-takers through June; scores for other years are based on test-takers through March. The scores for 2010 were adjusted. See [Special Notice](#) on Page 7.

Figure 18. Mean Total SAT Scores (Critical Reading + Mathematics) for Public School Students in North Carolina and the Nation, 2001-2011.

- The mean writing score for public school students in North Carolina was 469, down three points from the previous year’s score (472).
- Nationally, the writing score (483) for public school students in 2011 decreased three points from the previous year’s [see Table 12 in the Appendices].

Figures 19, 20 and 21 in the Appendices show the distribution of critical reading, mathematics, and writing SAT scores, respectively, for North Carolina's public schools by number of students. The scores for all three portions of the SAT approximate a normal distribution.

References

- Crouse, J. and Trusheim, D. (1988). *The Case Against the SAT*. Chicago: University of Chicago Press, 1988.
- Doermann, H. (1971). "Lack of Money: A Barrier to Higher Education." *Barriers to Higher Education*. New York: College Entrance Examination Board. 130-147.
- Doran, N. J. (2002, Spring). Recentering and realigning the SAT score distributions: how and why. *Journal of Educational Measurement*, 39, 59-84.
- Kobrin, J. L., Patterson, B. F., Shaw, E. J. Mattern, K. D., and Barbuti, S. M. (2008) Validity of the SAT for Predicting First-Year College Grade Point Average (College Board Report No. 2008-5), New York: The College Board.
- Lawrence, I., Rigol, G., Essen, T., and Jackson, C. (2002). A Historical Perspective on the SAT 1926-2001. *Res. Report*. New York: College Entrance Examination Board, 7, 1-13.
- Leman, N. (2000). The census of one ability. *The Big Test: The Secret History of the American Meritocracy*. New York: Farrar, Straus and Giroux, 81-95.
- Mattern, K. D., Patterson, B. F., Shaw, E. J., Kobrin, J. L., & Barbuti, S. M. (2008) Differential Validity and Prediction of the SAT (College Board Report No. 2008-4), New York: The College Board.
- Morse, R. J. and Flanigan, S. (2010) "Ranking the Schools," *U. S. News and World Report*, 84-124.
- North Carolina Department of Public Instruction. (1990). *North Carolina Scholastic Aptitude Test Results*. Raleigh: Author.
- The University of North Carolina. (2011, July). *Statistical abstract of higher education in North Carolina, 2010-2011* (Research Report 1-00). Chapel Hill, NC: Author.
- The College Board. (2011, September). *SAT Trends Background on the SAT Takers in the Class of 2011*. P. 13. New York: Author.
- The College Board (2011) *Student Achievement Report 2010-11 - North Carolina Schools*. Atlanta: Southern Regional Office.
- The College Board. (2011). *North Carolina State Summary Report 2010-2011*. Atlanta: Southern Regional Office.
- The College Board. (2011). *Electronic File for the 2011 North Carolina State Data*. Princeton, N. J.
- The College Board. (2011) *State Integrated Summary 2010-2011*. North Carolina All-Schools. Atlanta: Southern Regional Office.
- The College Board. (2011). *Educator's Handbook for the SAT and the SAT Subject Tests 2011-12*. New York, NY.

- Vars, F. E. and Bowen, W. G. (1998). Scholastic aptitude test scores, race, and academic performance in selective colleges and universities. In Christopher Jencks and Meredith Phillips, Eds. *The Black-White Test Score Gap*. Washington, D. C.: Brookings Institution Press, 1998, pp. 457-479.
- Western Interstate Commission for Higher Education (WICHE). *Knocking at the College Door: Projections of High School Graduates by State, Income, and Race/Ethnicity*, March 2008.
- Wilder, G. Z. and Powell, K. (1989). *Sex Differences in Test Performance: A Survey of the Literature*. New York: College Board Report, 89-3, 1-50.

Appendices

North Carolina and the Nation

Table 3. Mean SAT Scores for North Carolina and the United States, 1972-2011

Year	United States (US)			North Carolina (NC)			US-NC Gap ¹
	Critical Reading	Mathematics	Total	Critical Reading	Mathematics	Total	
2011	497	514	1011	493	508	1001	10
2010	500	515	1015	495	509	1004	11
2009	501	515	1016	495	511	1006	10
2008	502	515	1017	496	511	1007	10
2007	502	515	1017	495	509	1004	13
2006	503	518	1021	495	513	1008	13
2005	508	520	1028	499	511	1010	18
2004	508	518	1026	499	507	1006	20
2003	507	519	1026	495	506	1001	25
2002	504	516	1020	493	505	998	22
2001	506	514	1020	493	499	992	28
2000	505	514	1019	492	496	988	31
1999	505	511	1016	493	493	986	30
1998	505	512	1017	490	492	982	35
1997	505	511	1016	490	488	978	38
1996	505	508	1013	490	486	976	37
1995	504	506	1010	488	482	970	40
1994	499	504	1003	482	482	964	39
1993	500	503	1003	483	481	964	39
1992	500	501	1001	482	479	961	40
1991	499	500	999	478	474	952	47
1990	500	501	1001	478	470	948	53
1989	504	502	1006	474	469	943	63
1988	505	501	1006	478	470	948	58
1987	507	501	1008	477	468	945	63
1986	509	500	1009	477	465	942	67
1985	509	500	1009	476	464	940	69
1984	504	497	1001	473	461	934	67
1983	503	494	997	472	460	932	65
1982	504	493	997	474	460	934	63
1981	502	492	994	469	456	925	69
1980	502	492	994	471	458	929	65
1979	505	493	998	471	455	926	72
1978	507	494	1001	468	453	921	80
1977	507	496	1003	472	454	926	77
1976	509	497	1006	474	452	926	80
1975	512	498	1010	477	457	934	76
1974	521	505	1026	488	466	954	72
1973	523	506	1029	487	468	955	74
1972	530	509	1039	489	467	956	83

¹Gap = United States mean total SAT score minus North Carolina's mean total score.

Note: The numbers for 2010 and 2011 are based on cohort test-takers through June; the numbers for other years are based on test-takers through March. The scores for 2010 were adjusted. See Special Notice on Page 7.

Table 4. Frequency Distribution of Critical Reading, Mathematics, and Writing SAT Scores for North Carolina's Public School Students, 2010-2011

Score	Critical Reading (Mean = 489)			Mathematics (Mean = 507)			Writing (Mean = 469)		
	Number	Percent	Percentile Rank	Number	Percent	Percentile Rank	Number	Percent	Percentile Rank
800	150	0.28	99	175	0.32	99	58	0.11	99
790	52	0.10	99	8	0.01	99	54	0.10	99
780	38	0.07	99	58	0.11	99	58	0.11	99
770	58	0.11	99	141	0.26	99	53	0.10	99
760	40	0.07	99	111	0.20	99	62	0.11	99
750	144	0.27	99	142	0.26	99	117	0.22	99
740	228	0.42	99	158	0.29	99	53	0.10	99
730	108	0.20	99	161	0.30	98	136	0.25	99
720	263	0.48	98	183	0.34	98	129	0.24	99
710	198	0.36	98	334	0.62	98	233	0.43	98
700	318	0.59	97	424	0.78	97	213	0.39	98
690	418	0.77	97	473	0.87	96	167	0.31	98
680	501	0.92	96	556	1.02	95	300	0.55	97
670	616	1.14	95	631	1.16	94	399	0.74	97
660	413	0.76	94	724	1.33	93	441	0.81	96
650	539	0.99	93	809	1.49	91	408	0.75	95
640	638	1.18	92	870	1.60	90	579	1.07	94
630	733	1.35	91	952	1.75	88	464	0.86	93
620	1158	2.13	89	1019	1.88	86	726	1.34	92
610	776	1.43	87	1756	3.24	84	765	1.41	91
600	1414	2.61	85	1229	2.26	81	804	1.48	89
590	1068	1.97	83	1188	2.19	79	1108	2.04	88
580	1325	2.44	81	1486	2.74	76	988	1.82	86
570	1196	2.20	78	1534	2.83	74	1093	2.01	84
560	1636	3.01	76	2063	3.80	70	1249	2.30	82
550	1403	2.59	73	1537	2.83	67	1247	2.30	79
540	1844	3.40	70	1978	3.64	64	1560	2.87	77
530	1976	3.64	66	1708	3.15	60	1530	2.82	74
520	1494	2.75	63	2297	4.23	57	1765	3.25	71
510	2064	3.80	60	1846	3.40	53	1839	3.39	67
500	2080	3.83	56	1826	3.36	49	1844	3.40	64
490	1719	3.17	53	2700	4.98	45	2054	3.78	60
480	1978	3.64	49	1912	3.52	41	2188	4.03	57
470	2621	4.83	45	1691	3.12	38	1736	3.20	53
460	1544	2.85	41	2613	4.81	34	2143	3.95	49
450	2248	4.14	38	1683	3.10	30	2295	4.23	45
440	2153	3.97	34	1691	3.12	27	1897	3.50	41
430	1801	3.32	30	1705	3.14	23	2496	4.60	37
420	1886	3.48	26	1844	3.40	20	1915	3.53	33
410	1846	3.40	23	1631	3.01	17	2116	3.90	30
400	1650	3.04	20	1327	2.45	14	1950	3.59	26
390	1462	2.69	17	1065	1.96	12	1712	3.15	22
380	1480	2.73	14	1032	1.90	10	1691	3.12	19
370	1247	2.30	12	892	1.64	8	1738	3.20	16
360	1035	1.91	10	833	1.53	7	1339	2.47	13
350	1000	1.84	8	725	1.34	5	1230	2.27	11
340	738	1.36	6	514	0.95	4	1167	2.15	9
330	605	1.11	5	326	0.60	3	854	1.57	7
320	452	0.83	4	379	0.70	3	723	1.33	5
310	416	0.77	3	327	0.60	2	587	1.08	4
300	273	0.50	3	251	0.46	2	451	0.83	3
290	244	0.45	2	165	0.30	1	363	0.67	3
280	243	0.45	2	110	0.20	1	293	0.54	2
270	126	0.23	1	109	0.20	1	213	0.39	1
260	139	0.26	1	74	0.14	1	156	0.29	1
250	100	0.18	1	50	0.09	1	132	0.24	1
240	95	0.18	1	72	0.13	1	73	0.13	1
230	26	0.05	1	30	0.06	1	104	0.19	1
220	54	0.10	1	45	0.08	1	55	0.10	1
210	18	0.03	1	21	0.04	1	50	0.09	1
200	180	0.33	1	74	0.14	1	105	0.19	1
	54,268	100.00		54,268	99.97		54,268	99.99	

Note: Due to rounding, the percentages may not add up to exactly 100.

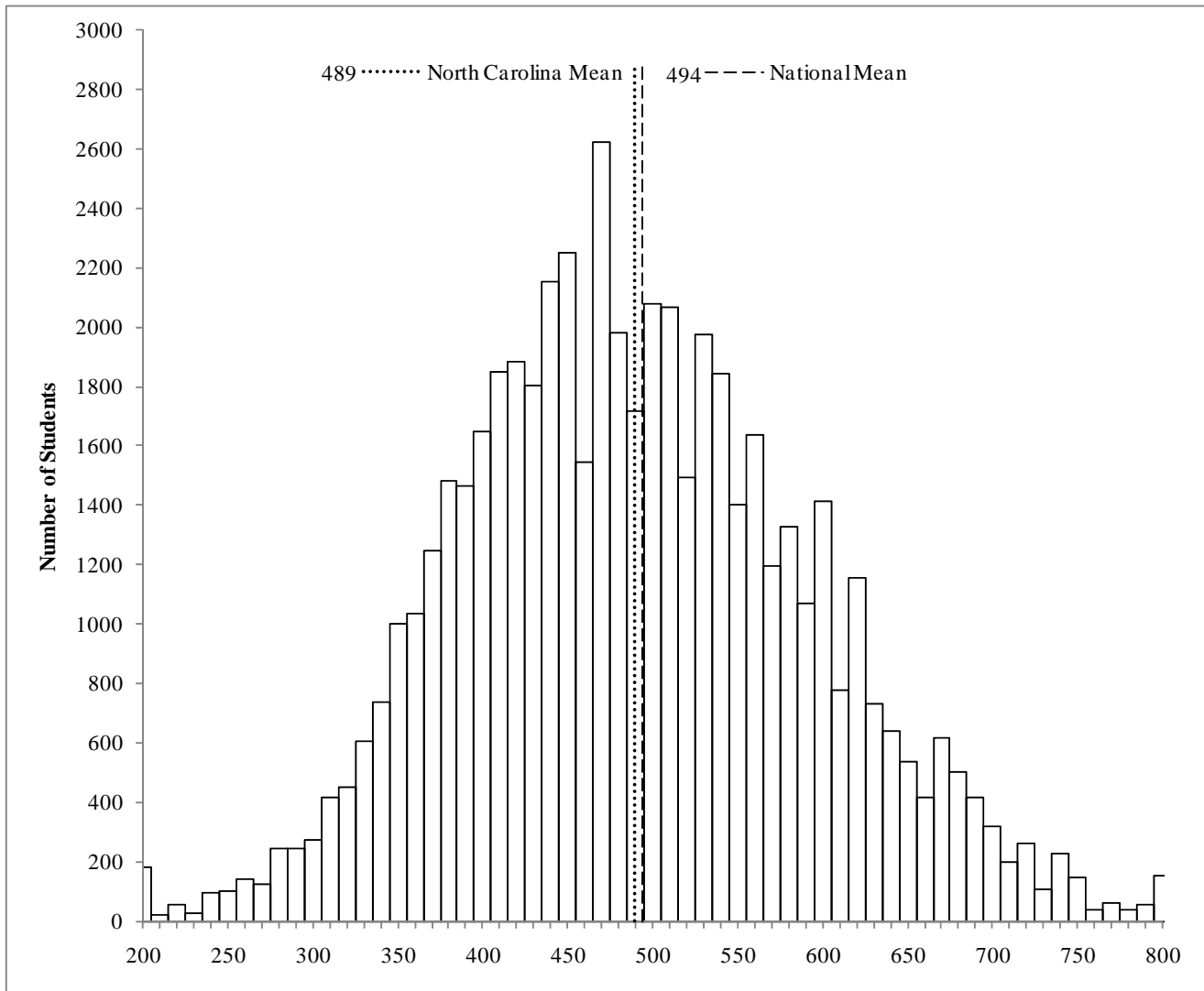


Figure 19. Distribution of SAT Critical Reading Scores for North Carolina’s Public Schools, 2010-2011.

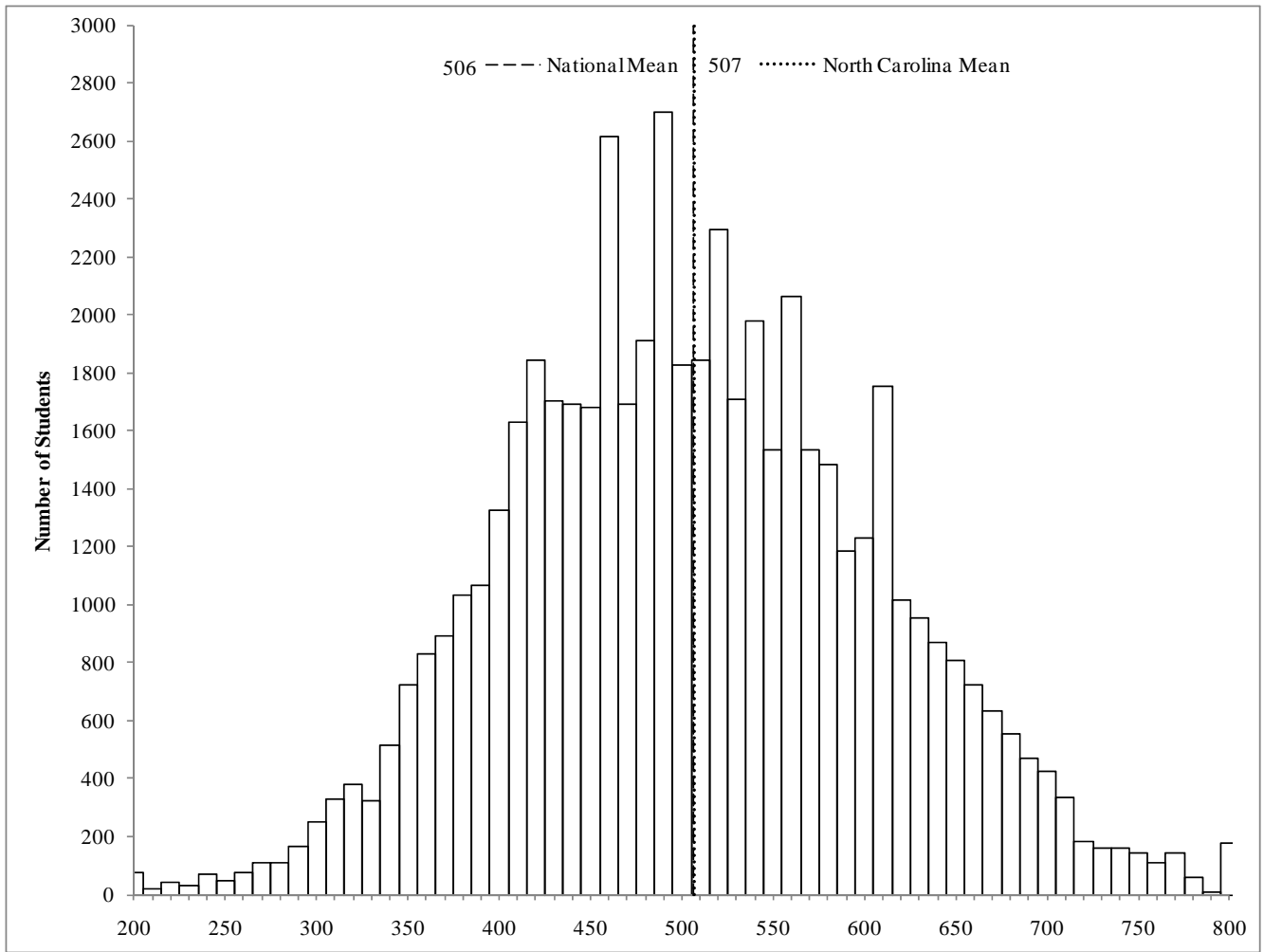


Figure 20. Distribution of SAT Mathematics Scores for North Carolina's Public Schools, 2010-2011.

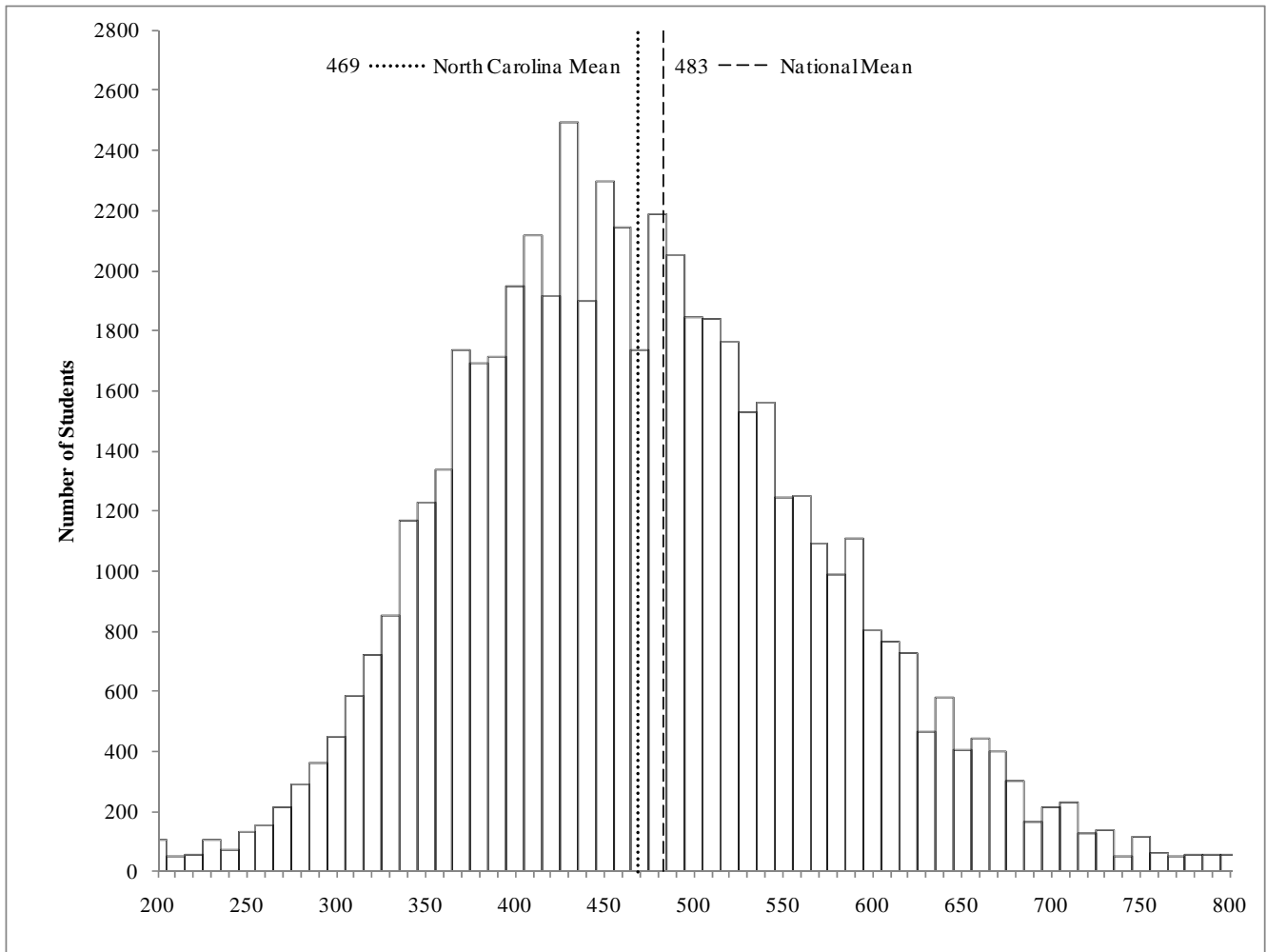


Figure 21. Distribution of SAT Writing Scores for North Carolina's Public Schools, 2010-2011.

Table 5. Mean Total SAT Scores (CR + M) by Student Profile Characteristics, 2010-2011

	United States			North Carolina			Difference
	N	Mean	%	N	Mean	%	
All Students	1,647,123	1011	100	62,149	1001	100	-10
Gender							
Male	770,605	1031	47	28,397	1020	46	-11
Female	876,518	995	53	33,752	987	54	-8
Race/Ethnicity							
American Indian	9,244	972	1	696	927	1	-45
Asian American	183,853	1112	11	2,486	1080	4	-32
Black	215,816	855	13	15,166	855	24	0
Hispanic	252,703	914	16	3,261	959	6	45
White	865,660	1063	53	37,991	1061	61	-2
Other	58,699	1010	4	1,647	992	3	-18
No Response	61,148	944	4	902	960	1	16
Parent Education Level							
No high school diploma	87,093	870	6	1,791	885	3	15
High school diploma	457,917	939	31	18,799	927	32	-12
Associate's degree	126,518	969	8	7,379	955	12	-14
Bachelor's degree	460,019	1060	31	19,468	1043	33	-17
Graduate degree	367,654	1133	25	12,018	1115	20	-18
Family Income (in \$)							
\$0 - \$20,000	120,671	894	13	4,573	875	12	-19
\$20,000 - \$40,000	153,379	944	16	7,011	933	18	-11
\$40,000-60,000	139,567	986	15	6,621	973	17	-13
\$60,000-\$80,000	129,406	1014	14	5,809	1006	15	-8
\$80,000-\$100,000	112,809	1042	12	4,643	1038	12	-4
\$100,000-\$120,000	96,829	1065	10	3,580	1059	9	-6
\$120,000-\$140,000	49,771	1074	5	1,771	1069	5	-5
\$140,000-\$160,000	37,800	1090	4	1,304	1086	3	-4
\$160,000-\$200,000	44,345	1100	5	1,348	1098	3	-2
More than \$200,000	67,117	1154	7	1,898	1143	5	-11
No Response	695,429	1011		23,591	1009		-2
Highest Level of Math Achieved¹							
Calculus	329,020	1176	25	11,155	1163	21	-13
Pre-calculus	379,930	1048	29	16,082	1042	30	-6
Trigonometry	166,029	968	12	3,154	953	6	-15
Algebra II	372,676	903	28	21,121	912	39	9
Algebra I	57,632	816	4	1,517	795	3	-21
AP/Honors Courses	482,572	1151	36	27,654	1095		-56
H S Grade Point Average							
A+ (97-100)	93,834	1216	6	4,164	1186	7	-30
A (93-96)	294,277	1143	19	14,884	1109	25	-34
A- (90-92)	293,369	1076	19	11,878	1031	20	-45
B (80-89)	681,181	949	45	23,087	928	39	-21
C (70-79)	156,377	837	10	4,937	825	8	-12
D or below (<70)	7,455	834	0	160	853	0	19
No Response	120,630	969		3,039	954		-15
High School Class Rank²							
Highest Tenth	246,839	1181	35	10,623	1166	31	-15
Second Tenth	189,678	1045	27	9,184	1046	27	1
Second Fifth	129,814	980	18	6,705	978	19	-2
Final Three Fifths	145,441	886	20	7,950	881	23	-5
No Response	935,351	985		27,687	963		-22

¹In this report, *Total Years of Study in Six Academic Subjects* data has been replaced by *Highest Level of Mathematics Achieved*.

²The College Board collapsed "High School Class Rank" from six categories to four in 2006.

Note: Due to rounding, some numbers might not sum to 100%. All values in this table are based upon the number of SAT Reasoning Test test-takers and self-reported student responses.

Table 6. Mean Total SAT Scores (CR + M) for the United States and North Carolina by Student Profile Characteristics, 2010-2011

	2010			2011		
	US	NC	Diff.	US	NC	Diff.
All Students	1015	1004	-11	1011	1001	-10
Gender						
Male	1035	1020	-15	1031	1020	-11
Female	997	992	-5	995	987	-8
No Response	***	***	***	***	***	***
Race/Ethnicity						
American Indian	974	913	-61	972	927	-45
Asian American	1112	1085	-27	1112	1080	-32
Black	855	856	1	855	855	0
Hispanic	916	966	50	914	959	45
White	1064	1063	-1	1063	1061	-2
Other	1015	1006	-9	1010	992	-18
No Response	955	965	10	944	960	16
Parent Education Level						
No high school diploma	*	*	*	870	885	15
High school diploma	*	*	*	939	927	-12
Associate's degree	*	*	*	969	955	-14
Bachelor's degree	*	*	*	1060	1043	-17
Graduate degree	*	*	*	1133	1115	-18
Family Income (in U.S. \$)¹						
\$0 - \$20,000	*	*	*	894	875	-19
\$20,000 - \$40,000	*	*	*	944	933	-11
\$40,000-60,000	*	*	*	986	973	-13
\$60,000-\$80,000	*	*	*	1014	1006	-8
\$80,000-\$100,000	*	*	*	1042	1038	-4
\$100,000-\$120,000	*	*	*	1065	1059	-6
\$120,000-\$140,000	*	*	*	1074	1069	-5
\$140,000-\$160,000	*	*	*	1090	1086	-4
\$160,000-\$200,000	*	*	*	1100	1098	-2
More than \$200,000	*	*	*	1154	1143	-11
No Response	*	*	*	1011	1009	-2
Highest Level of Math Achieved²						
Calculus	*	*	*	1176	1163	-13
Pre-calculus	*	*	*	1048	1042	-6
Trigonometry	*	*	*	968	953	-15
Algebra II	*	*	*	903	912	9
Algebra I	*	*	*	816	795	-21
AP/Honors Courses	*	*	*	1151	1095	-56
HS Grade Point Average						
A+ (97-100)	*	*	*	1216	1186	-30
A (93-96)	*	*	*	1143	1109	-34
A- (90-92)	*	*	*	1076	1031	-45
B (80-89)	*	*	*	949	928	-21
C (70-79)	*	*	*	837	825	-12
D or below (<70)	*	*	*	834	853	19
No Response	*	*	*	969	954	-15
High School Class Rank						
Top Tenth	*	*	*	1181	1166	-15
Second Tenth	*	*	*	1045	1046	1
Second Fifth	*	*	*	980	978	-2
Final Three Fifths	*	*	*	886	881	-5
No Response	*	*	*	985	963	-22

Note: Due to rounding, numbers might not add up to 100%; Data for years previous to 2010 are not comparable.

Performance of the 115 Public School Systems, Charter Schools, North Carolina School of the Arts, and North Carolina School of Science and Mathematics

Table 7. SAT Performance by Students in North Carolina's Public School Systems and Schools, 2011

Revised September 22, 2011 at 12:30 p.m.

2011							
School System & School	# Tested	% Tested	Math Score	CR Score ¹	Writing Score ²	M+CR ²	M+CR+W ³
United States (All Students)	1647123	50.0	514	497	489	1011	1500
North Carolina (All Students)	62149	67.0	508	493	474	1001	1475
NC School Of Science & Math	331	NA	690	649	640	1339	1979
NC School Of The Arts	100	NA	563	577	566	1140	1706
Greensboro Area Math Sci Ed Cr	1	NA	*	*	*	*	*
010 Alamance-Burlington	779	61.6	499	467	452	966	1418
010 303 Alamance-Burlington Mid Colleg	10	40.0	483	452	421	935	1356
010 324 Eastern Alamance High	146	70.9	517	480	451	997	1448
010 348 Graham High	86	54.8	463	439	423	902	1325
010 360 Hugh M Cummings High	67	47.9	438	406	386	844	1230
010 388 Southern High	150	54.5	485	460	446	945	1391
010 396 Walter M Williams High	153	73.2	509	477	468	986	1454
010 400 Western Alamance High	167	67.3	530	493	485	1023	1508
01B River Mill Academy	33	94.3	482	466	458	948	1406
01C Clover Garden	11	84.6	499	502	455	1001	1456
01D The Hawbridge School	5	38.5	490	564	532	1054	1586
020 Alexander County Sch	142	40.8	488	467	444	955	1399
020 302 Alexander Central High	142	40.8	488	467	444	955	1399
030 Alleghany County Sch	48	51.1	490	481	450	971	1421
030 304 Alleghany High	48	51.1	490	481	450	971	1421
040 Anson County Schools	159	53.7	436	427	407	863	1270
040 304 Anson Early College High	43	61.4	497	487	467	984	1451
040 305 Anson Challenge Academy	1	6.7	*	*	*	*	*
040 306 Anson High	76	45.0	389	391	374	780	1154
040 700 Anson New Technology High	39	92.9	463	433	407	896	1303
050 Ashe County Schools	116	56.0	522	483	466	1005	1471
050 302 Ashe County High	116	56.0	522	483	466	1005	1471
060 Avery County Schools	79	52.3	502	509	468	1011	1479
060 302 Avery County High	79	52.3	502	509	468	1011	1479
06B Crossnore Academy	10	83.3	405	372	338	777	1115
070 Beaufort County Scho	215	54.3	485	457	427	942	1369
070 310 Beaufort County Ed Tech Cntr	3	15.8	*	*	*	*	*
070 330 Northside High	43	53.8	493	463	434	956	1390
070 339 Southside High	58	58.0	478	438	417	916	1333
070 342 Washington High	111	56.3	489	468	434	957	1391
080 Bertie County School	118	67.4	410	387	364	797	1161
080 312 Bertie High	76	66.1	388	373	353	761	1114
080 700 Bertie Stem High	42	72.4	449	411	383	860	1243
090 Bladen County School	146	47.9	454	411	399	865	1264
090 330 East Bladen High	71	53.0	449	399	397	848	1245
090 368 West Bladen High	75	46.0	458	423	400	881	1281
100 Brunswick County Sch	326	41.4	489	475	460	964	1424
100 307 Brunswick County Early College	43	54.4	522	506	500	1028	1528
100 308 Brunswick Learn Ctr	1	9.1	*	*	*	*	*
100 326 North Brunswick High	85	48.3	453	441	423	894	1317
100 324 South Brunswick High	103	41.5	493	487	469	980	1449
100 348 West Brunswick High	94	34.4	504	479	465	983	1448
110 Buncombe County Scho	966	59.7	536	519	492	1055	1547
110 303 Buncombe Community-East	1	2.7	*	*	*	*	*
110 304 A C Reynolds High	154	57.7	559	546	515	1105	1620
110 322 Buncombe County Early College	25	42.4	552	558	520	1110	1630
110 323 Buncombe County Middle College	5	11.6	524	592	514	1116	1630
110 336 Charles D Owen High	117	70.1	528	511	484	1039	1523
110 340 Clyde A Erwin High	114	49.1	501	470	445	971	1416
110 352 Enka High	148	60.4	513	500	468	1013	1481
110 380 North Buncombe High	157	64.9	542	517	485	1059	1544
110 416 T C Roberson High	245	75.2	551	535	520	1086	1606
111 Asheville City Schoo	173	70.0	528	535	509	1063	1572
111 302 Asheville High	164	76.6	527	533	508	1060	1568
111 700 Asheville High Of Inq & Life S	9	30.0	539	578	527	1117	1644
120 Burke County Schools	412	47.1	514	476	456	990	1446
120 310 Burke Middle College	32	60.4	503	480	456	983	1439
120 314 East Burke High	81	39.9	543	486	468	1029	1497
120 318 Freedom High	123	48.8	502	473	452	975	1427
120 346 Jimmy C. Draughn High	64	51.2	522	471	447	993	1440
120 370 Robert L. Patton High	112	54.4	506	474	456	980	1436
130 Cabarrus County Scho	1169	65.3	522	497	483	1019	1502
130 307 Cox Mill High School	158	81.0	524	495	481	1019	1500
130 310 Central Cabarrus High	141	56.2	503	474	460	977	1437
130 314 Concord High	136	52.7	516	502	480	1018	1498
130 316 Jay M Robinson High	219	66.8	541	516	501	1057	1558
130 324 Mount Pleasant High	109	58.6	517	496	478	1013	1491
130 326 N W Cabarrus High	143	67.1	520	498	477	1018	1495
130 332 Hickory Ridge High	250	78.4	524	492	490	1016	1506
130 333 Cabarrus County Performance Le	13	34.2	472	508	428	980	1408
132 Kannapolis City Scho	134	51.3	473	465	444	938	1382
132 304 A. L. Brown High	134	51.3	473	465	444	938	1382
140 Caldwell County Scho	475	53.2	505	477	459	982	1441
140 305 Caldwell Career Cen Mid. Coll.	7	30.4	463	476	427	939	1366
140 309 Caldwell Early College	61	45.9	526	514	491	1040	1531
140 348 Hibriten High	123	58.3	493	469	468	962	1430
140 386 South Caldwell High	167	50.8	528	487	467	1015	1482
140 390 West Caldwell High	117	60.3	476	450	425	926	1351
150 Camden County School	81	68.1	479	480	451	959	1410
150 304 Camden County High	54	64.3	491	489	457	980	1437
150 700 Cam Tech High	27	77.1	456	463	440	919	1359
160 Carteret County Publ	322	60.8	527	519	489	1046	1535
160 313 East Carteret High	49	41.9	502	509	476	1011	1487
160 314 Croatan High	136	81.9	531	527	503	1058	1561
160 344 West Carteret High	137	55.5	533	515	480	1048	1528

Table 7. SAT Performance by Students in North Carolina's Public School Systems and Schools, 2011

Revised September 22, 2011 at 12:30 p.m.

2011							
School System & School	# Tested	% Tested	Math Score	CR Score ¹	Writing Score ²	M+CR ²	M+CR+W ³
United States (All Students)	1647123	50.0	514	497	489	1011	1500
North Carolina (All Students)	62149	67.0	508	493	474	1001	1475
16A Cape Lookout Marine	1	4.5	*	*	*	*	*
170 Caswell County Schoo	91	56.5	452	437	424	889	1313
170 316 Bartlett Yancey High	91	56.5	452	437	424	889	1313
180 Catawba County Schoo	651	56.5	518	490	461	1008	1469
180 308 Bandys High	107	61.1	526	500	466	1026	1492
180 320 Bunker Hill High	89	47.3	496	458	425	954	1379
180 325 Catawba Valley Early Coll Hi	72	75.8	517	505	477	1022	1499
180 340 Fred T Foard High	133	54.3	525	488	461	1013	1474
180 348 Maiden High	89	48.6	501	455	436	956	1392
180 376 Saint Stephens High	161	61.9	530	514	484	1044	1528
181 Hickory City Schools	156	71.2	536	514	501	1050	1551
181 318 Catawba Valley High	1	50.0	*	*	*	*	*
181 322 Hickory High	155	71.4	536	514	501	1050	1551
182 Newton Conover City	129	62.3	502	477	459	979	1438
182 316 Newton-Conover High	114	64.4	505	473	456	978	1434
182 700 Newton-Conover Health/Sci	15	100.0	477	510	480	987	1467
190 Chatham County Schoo	279	67.4	494	478	461	972	1433
190 310 Sage	1	16.7	*	*	*	*	*
190 316 Chatham Central High	61	65.6	483	448	426	931	1357
190 336 Jordan Matthews High	89	59.3	479	461	443	940	1383
190 342 Northwood High	128	77.6	511	505	490	1016	1506
19B Woods Charter	36	85.7	556	584	556	1140	1696
200 Cherokee County Scho	137	57.3	484	484	463	968	1431
200 308 Andrews High	43	72.9	456	445	428	901	1329
200 314 Hiwassee Dam High	18	43.9	527	523	481	1050	1531
200 322 Mountain Youth School	1	10.0	*	*	*	*	*
200 328 Murphy High	61	56.5	482	487	470	969	1439
200 350 Tri-County Early College High	14	66.7	532	541	524	1073	1597
210 Edenton-Chowan Schoo	89	66.4	457	439	429	896	1325
210 312 John A Holmes High	89	66.4	457	439	429	896	1325
220 Clay County Schools	53	59.6	524	494	492	1018	1510
220 310 Hayesville High	53	59.6	524	494	492	1018	1510
230 Cleveland County Sch	589	58.6	500	470	451	970	1421
230 312 Burns High	145	64.7	492	462	444	954	1398
230 324 Crest Senior High	139	50.9	508	476	456	984	1440
230 350 Kings Mountain High	127	44.1	535	496	474	1031	1505
230 361 Shelby High	178	86.0	474	453	438	927	1365
240 Columbus County Scho	167	45.3	467	440	427	907	1334
240 334 East Columbus High	48	45.3	466	421	411	887	1298
240 371 South Columbus High	47	40.2	476	446	447	922	1369
240 373 Southeastern Early College	23	45.1	490	491	470	981	1451
240 380 West Columbus High	49	53.8	449	430	405	879	1284
241 Whiteville City Scho	78	60.0	468	444	439	912	1351
241 316 Whiteville High	78	61.9	468	444	439	912	1351
250 Craven County School	436	42.8	507	489	452	996	1448
250 314 Craven Early College High	21	27.3	499	494	442	993	1435
250 340 Havelock High	109	44.0	513	496	454	1009	1463
250 356 New Bern High	233	53.1	504	485	456	989	1445
250 372 West Craven High	73	28.6	508	487	439	995	1434
260 Cumberland County Sc	1803	55.9	476	469	445	945	1390
260 318 Jack Britt High	241	62.4	517	502	476	1019	1495
260 322 Douglas Byrd High	134	53.0	441	426	395	867	1262
260 325 Cape Fear High	154	55.0	498	480	456	978	1434
260 354 Cross Creek Early College	45	93.8	478	480	442	958	1400
260 357 Gray's Creek High	143	52.0	473	474	437	947	1384
260 359 E.E. Smith High	109	53.2	445	422	409	867	1276
260 388 Massey Hill Classic Sch	69	77.5	471	507	460	978	1438
260 408 Pine Forest High	173	53.9	474	471	440	945	1385
260 411 Reid Ross Classical School	56	87.5	480	497	469	977	1446
260 424 Seventy-First High	141	44.6	438	439	423	877	1300
260 427 South View High	172	50.9	470	469	444	939	1383
260 446 Terry Sanford High	201	67.0	522	503	493	1025	1518
260 455 Westover High	130	55.6	421	415	404	836	1240
260 700 Howard Health	35	92.1	460	454	442	914	1356
270 Currituck County Sch	153	62.4	511	494	466	1005	1471
270 306 Currituck County High	153	62.4	511	494	466	1005	1471
280 Dare County Schools	269	80.3	520	500	475	1020	1495
280 304 Cape Hatteras Secondary	27	64.3	534	527	495	1061	1556
280 316 Manteo High	73	76.8	513	477	443	990	1433
280 330 First Flight High	169	88.0	520	506	486	1026	1512
290 Davidson County Scho	668	53.4	510	488	463	998	1461
290 308 Central Davidson High	100	50.8	493	473	443	966	1409
290 314 Davidson Co Ext Day	3	10.7	*	*	*	*	*
290 315 Davidson Early College	25	92.6	562	560	521	1122	1643
290 324 East Davidson High	108	54.3	500	468	458	968	1426
290 336 Ledford Senior High	135	58.2	512	501	481	1013	1494
290 348 North Davidson Sr High	206	64.8	521	495	460	1016	1476
290 365 South Davidson High	22	25.9	476	462	456	938	1394
290 388 West Davidson High	69	47.3	505	476	452	981	1433
291 Lexington City Schoo	83	55.0	454	445	421	899	1320
291 336 Lexington Sr High	83	56.1	454	445	421	899	1320
292 Thomasville City Sch	95	74.8	441	425	405	866	1271
292 324 Thomasville High	95	74.8	441	425	405	866	1271
300 Davie County Schools	199	53.2	523	508	481	1031	1512
300 312 Davie High	170	50.6	523	508	478	1031	1509
300 314 Davie County Early College Hig	29	76.3	523	508	497	1031	1528

Notes: See footnotes on the last page of this file for detailed descriptions.

Table 7. SAT Performance by Students in North Carolina's Public School Systems and Schools, 2011

Revised September 22, 2011 at 12:30 p.m.

2011							
School System & School	# Tested	% Tested	Math Score	CR Score ¹	Writing Score ²	M+CR ²	M+CR+W ³
United States (All Students)	1647123	50.0	514	497	489	1011	1500
North Carolina (All Students)	62149	67.0	508	493	474	1001	1475
310 Duplin County School	195	43.5	462	447	435	909	1344
310 338 Duplin Early College High	32	78.0	438	441	426	879	1305
310 344 East Duplin High	59	35.1	515	487	484	1002	1486
310 352 James Kenan High	35	43.8	403	397	377	800	1177
310 364 North Duplin Jr Sr	37	55.2	474	447	435	921	1356
310 392 Wallace-Rose Hill High	32	34.8	439	431	417	870	1287
320 Durham Public School	1545	73.1	476	475	452	951	1403
320 309 Josephine Dobbs Clement Early	82	100.0	485	469	463	954	1417
320 312 C E Jordan High	325	79.7	529	532	512	1061	1573
320 317 City Of Medicine Academy	29	80.6	410	426	395	836	1231
320 322 Durham's Performance Learning	12	37.5	390	435	383	825	1208
320 323 Durham School Of Arts	125	88.0	534	538	523	1072	1595
320 325 Hillside High	167	67.9	420	415	403	835	1238
320 341 Lakeview School	1	9.1	*	*	*	*	*
320 353 Middle College High @dtcc	36	78.3	529	531	476	1060	1536
320 356 Northern High	250	72.3	464	450	426	914	1340
320 365 Riverside High	291	73.1	494	491	458	985	1443
320 368 Southern High	111	47.6	390	393	366	783	1149
320 700 Souther School Of Engineering	34	65.4	410	397	381	807	1188
320 701 Hillside New Tech High	82	95.3	422	439	413	861	1274
32D Kestrel Heights Scho	32	74.4	432	456	423	888	1311
330 Edgecombe County Pub	213	45.1	468	437	420	905	1325
330 326 Edgecombe Early College High	32	64.0	515	480	475	995	1470
330 328 North Edgecombe High	28	37.3	440	384	374	824	1198
330 350 Southwest Edgecombe	83	39.7	462	435	401	897	1298
330 358 Tarboro High	70	51.1	464	440	436	904	1340
340 Forsyth County School	2209	66.1	506	493	472	999	1471
340 330 Carver High	75	64.1	416	402	391	818	1209
340 362 Earlycollege At Forsyth	2	NA	*	*	*	*	*
340 364 East Forsyth High	300	67.6	500	489	458	989	1447
340 382 R B Glenn High	167	56.6	481	474	453	955	1408
340 446 Middle College Forsyth	6	10.2	450	485	467	935	1402
340 454 Mount Tabor High	326	83.6	544	526	506	1070	1576
340 460 North Forsyth High	129	52.7	445	448	423	893	1316
340 486 Parkland High	173	64.1	443	432	409	875	1284
340 495 Reagan High	331	83.8	548	526	505	1074	1579
340 496 Reynolds High	247	67.1	526	518	504	1044	1548
340 556 West Forsyth High	314	70.6	542	528	507	1070	1577
340 568 Winston-Salem Prep Academy	26	86.7	424	414	402	838	1240
340 700 Sch Of Comp Tech At Atkins Hig	22	45.8	474	455	432	929	1361
340 701 Sch Of Biot At Atkins High	38	70.4	408	411	379	819	1198
340 702 Sch Of Pre-Engin At Atkins Hig	27	48.2	393	359	338	752	1090
340 703 Jacket Academy At Carver	20	47.6	406	399	377	805	1182
34D Carter G Woodson Sch	15	100.0	405	371	348	776	1124
350 Franklin County Scho	259	52.6	487	471	453	958	1411
350 308 Bunn High	97	62.6	506	485	461	991	1452
350 321 Franklinton High	87	53.7	485	475	469	960	1429
350 336 Louisburg High	75	42.9	464	447	424	911	1335
360 Gaston County School	1136	58.3	495	480	455	975	1430
360 310 Ashbrook High	156	58.2	481	466	439	947	1386
360 336 Bessemer City High	54	50.0	462	441	428	903	1331
360 360 Cherryville Sr High	54	42.5	474	466	451	940	1391
360 390 East Gaston High	150	53.3	500	474	457	974	1431
360 396 Forestview High	219	76.3	503	485	460	988	1448
360 418 Highland School Of Technology	125	94.7	536	526	484	1062	1546
360 428 Hunter Huss High	91	42.5	453	459	425	912	1337
360 470 North Gaston High	76	38.2	518	478	449	996	1445
360 494 South Point High	211	67.4	495	487	468	982	1450
36B Piedmont Community C	22	78.6	503	510	470	1013	1483
370 Gates County Schools	57	44.9	476	458	424	934	1358
370 312 Gates County Sr High	57	44.9	476	458	424	934	1358
380 Graham County School	43	55.1	511	476	470	987	1457
380 308 Robbinsville High	43	55.1	511	476	470	987	1457
390 Granville County Sch	300	58.0	478	458	446	936	1382
390 322 Granville Central High	60	41.4	461	458	431	919	1350
390 324 J F Webb High	71	57.3	488	457	447	945	1392
390 700 J F Webb High Of Health Sci	48	88.9	488	457	455	945	1400
390 704 South Granville Hi Of Heal Sci	51	58.6	489	469	464	958	1422
390 705 South Granville High Of Busine	70	66.7	469	451	438	920	1358
400 Greene County School	82	38.7	433	419	392	852	1244
400 308 Greene Central High	68	40.2	435	413	385	848	1233
400 315 Greene Early College High	14	32.6	426	449	428	875	1303
410 Guilford County School	3402	71.4	493	484	468	977	1445
410 319 T Wingate Andrews High	122	72.2	422	406	402	828	1230
410 326 Middle College High At Bennet	17	70.8	372	373	371	745	1116
410 355 Dudley High	221	70.2	404	391	382	795	1177
410 358 Eastern Guilford High	114	51.8	464	452	436	916	1352
410 390 Gc Middle College High	56	90.3	456	499	466	955	1421
410 391 Penn-Griffin School For The Ar	25	100.0	548	556	527	1104	1631
410 394 Grimsley High	288	75.4	541	539	519	1080	1599
410 395 Early College At Guilford	57	100.0	660	638	622	1298	1920
410 399 Gtcc East Middle College High	33	89.2	488	481	455	969	1424
410 401 Gtcc Middle College High	26	54.2	480	489	443	969	1412
410 406 High Point Central High	173	68.9	486	470	458	956	1414
410 407 The Academy At High Point Cent	8	50.0	483	428	444	911	1355
410 408 High Point Gtcc Mid Coll High	28	75.7	461	471	434	932	1366
410 483 Middle College High At Ne A&t	20	100.0	394	405	371	799	1170
410 484 Northeast High	143	66.2	437	430	412	867	1279
410 489 Northern Guilford High	225	79.2	528	519	502	1047	1549
410 490 Northwest High	349	83.1	561	545	532	1106	1638
410 508 Walter Hines Page High	268	67.2	515	515	497	1030	1527

Notes: See footnotes on the last page of this file for detailed descriptions.

Table 7. SAT Performance by Students in North Carolina's Public School Systems and Schools, 2011

Revised September 22, 2011 at 12:30 p.m.

		2011						
School System & School	# Tested	% Tested	Math Score	CR Score ¹	Writing Score ²	M+CR ²	M+CR+W ³	
United States (All Students)	1647123	50.0	514	497	489	1011	1500	
North Carolina (All Students)	62149	67.0	508	493	474	1001	1475	
410 529 Lucy Ragsdale High	230	78.8	510	492	469	1002	1471	
410 544 Ben L. Smith High	144	56.5	409	398	378	807	1185	
410 545 Smith Academy	59	96.7	452	440	413	892	1305	
410 547 Southeast High	206	73.6	478	474	456	952	1408	
410 556 Southern High	129	58.4	463	448	432	911	1343	
410 562 Southwest High	214	69.7	494	480	468	974	1442	
410 589 P J Weaver Ed Center	46	92.0	538	555	530	1093	1623	
410 595 Western High	201	74.7	500	494	485	994	1479	
420 Halifax County Schoo	124	44.3	399	390	386	789	1175	
420 346 Northwest High	73	43.5	416	393	394	809	1203	
420 358 Southeast Halifax High	51	45.5	375	386	375	761	1136	
421 Roanoke Rapids City	119	61.3	464	465	450	929	1379	
421 316 Roanoke Rapids High	119	61.3	464	465	450	929	1379	
422 Weldon City Schools	58	81.7	392	341	338	733	1071	
422 700 Weldon Science Technology Engi	58	81.7	392	341	338	733	1071	
430 Harnett County Schoo	584	53.8	472	461	440	933	1373	
430 345 Harnett County Alternative	1	9.1	*	*	*	*	*	
430 346 Harnett Central High	154	56.4	484	476	452	960	1412	
430 371 Overhills High	152	50.8	455	462	442	917	1359	
430 378 Triton High	162	58.3	474	447	433	921	1354	
430 384 Western Harnett High	115	51.3	477	461	433	938	1371	
440 Haywood County Schoo	236	44.2	535	511	494	1046	1540	
440 326 Central Haywood High	1	1.9	*	*	*	*	*	
440 346 Haywood Early College	10	20.8	509	542	486	1051	1537	
440 378 Pisgah High	93	46.3	512	480	471	992	1463	
440 390 Tuscola High	132	56.7	553	530	510	1083	1593	
450 Henderson County Sch	451	55.2	522	518	492	1040	1532	
450 316 East Henderson High	102	50.7	519	509	482	1028	1510	
450 334 Hendersonville High	119	70.0	531	531	498	1062	1560	
450 341 North Henderson High	95	51.9	499	503	487	1002	1489	
450 352 West Henderson High	135	54.7	534	524	498	1058	1556	
460 Hertford County Scho	142	58.0	412	393	377	805	1182	
460 320 Hertford County High	141	63.5	412	392	377	804	1181	
460 340 Student Development Center	1	4.3	*	*	*	*	*	
470 Hoke County Schools	182	41.6	451	441	425	892	1317	
470 312 Hoke County High	152	42.6	440	431	415	871	1286	
470 443 Sandhoke Early College High	30	44.8	509	492	476	1001	1477	
480 Hyde County Schools	24	53.3	458	453	425	911	1336	
480 307 Mattamuskeet High	17	47.2	429	417	393	846	1239	
480 316 Ocracoke	7	77.8	529	540	503	1069	1572	
490 Iredell-Statesville	847	60.4	524	502	480	1026	1506	
490 320 Collab Col Of Tech & Leadershi	34	54.0	491	523	513	1014	1527	
490 335 Lake Norman High	374	89.5	550	528	505	1078	1583	
490 346 North Iredell High	123	45.9	527	494	473	1021	1494	
490 354 Statesville High	120	56.3	500	489	465	989	1454	
490 362 South Iredell High	109	53.7	485	459	434	944	1378	
490 380 West Iredell High	87	43.5	506	466	446	972	1418	
491 Mooresville City Sch	278	70.6	506	483	468	989	1457	
491 312 Mooresville Sr High	278	70.6	506	483	468	989	1457	
49E Pine Lake Preparator	32	100.0	550	532	513	1082	1595	
500 Jackson County Schoo	98	47.1	513	495	472	1008	1480	
500 302 Blue Ridge Virtual Early Colle	6	37.5	480	435	435	915	1350	
500 323 Jackson County Early College	3	16.7	*	*	*	*	*	
500 340 Smoky Mountain High	89	57.8	517	498	475	1015	1490	
510 Johnston County Scho	867	49.8	517	492	470	1009	1479	
510 324 Clayton High	257	60.5	520	494	477	1014	1491	
510 357 Johnston Middle College	20	35.1	536	548	508	1084	1592	
510 367 Johnston County Early College	2	*	*	*	*	*	*	
510 368 North Johnston High	65	42.2	522	464	458	986	1444	
510 376 Princeton High	43	40.6	530	511	481	1041	1522	
510 399 Smithfield-Selma High	137	44.1	483	475	452	958	1410	
510 402 South Johnston High	73	30.3	528	495	473	1023	1496	
510 406 West Johnston High	270	60.9	523	497	470	1020	1490	
520 Jones County Schools	59	64.8	467	439	420	906	1326	
520 320 Jones Senior High	59	64.8	467	439	420	906	1326	
530 Lee County Schools	313	56.2	497	476	448	973	1421	
530 335 Lee Early College	33	39.8	507	505	475	1012	1487	
530 336 Lee County Sr High	148	59.4	501	480	451	981	1432	
530 343 Southern Lee High	132	61.4	490	465	437	955	1392	
540 Lenoir County Public	270	42.9	468	444	420	912	1332	
540 315 Kinston High	98	50.3	438	404	394	842	1236	
540 317 Lenoir County Early College Hi	11	28.2	455	463	409	918	1327	
540 324 North Lenoir High	102	48.3	472	452	419	924	1343	
540 336 South Lenoir High	59	36.6	515	494	469	1009	1478	
550 Lincoln County Schoo	449	58.7	513	478	456	991	1447	
550 320 East Lincoln High	102	56.4	520	481	457	1001	1458	
550 332 Lincolnton High	93	47.4	489	475	450	964	1414	
550 344 North Lincoln High	152	71.7	532	492	478	1024	1502	
550 368 West Lincoln High	102	58.6	498	458	428	956	1384	
55A Lincoln Charter Scho	51	98.1	497	502	475	999	1474	
560 Macon County Schools	151	57.2	505	494	464	999	1463	
560 320 Franklin High	116	60.1	493	484	454	977	1431	
560 324 Highlands School	16	57.1	542	511	479	1053	1532	
560 329 Macon County Early College Hig	13	50.0	537	564	515	1101	1616	
560 332 Nantahala School	6	75.0	558	498	495	1056	1551	
570 Madison County Schoo	58	39.2	510	498	461	1008	1469	
570 318 Madison High	58	39.5	510	498	461	1008	1469	
580 Martin County School	101	46.8	474	441	418	915	1333	
580 344 Roanoke High	37	39.4	465	420	404	885	1289	
580 368 Williamston High	64	52.5	479	453	426	932	1358	
590 McDowell County Scho	170	42.8	495	477	460	972	1432	
590 328 McDowell Early College	25	53.2	482	488	462	970	1432	
590 330 McDowell High	145	41.4	497	475	460	972	1432	

Notes: See footnotes on the last page of this file for detailed descriptions.

Table 7. SAT Performance by Students in North Carolina's Public School Systems and Schools, 2011

Revised September 22, 2011 at 12:30 p.m.

School System & School	2011						
	# Tested	% Tested	Math Score	CR Score ¹	Writing Score ²	M+CR ²	M+CR+W ³
United States (All Students)	1647123	50.0	514	497	489	1011	1500
North Carolina (All Students)	62149	67.0	508	493	474	1001	1475
600 Charlotte-Mecklenbur	5240	68.5	507	495	480	1002	1482
600 302 Ardrey Kell High	404	90.0	564	539	534	1103	1637
600 334 Cato Middle College High	58	100.0	525	504	486	1029	1515
600 361 David W. Butler High	386	68.3	528	507	492	1035	1527
600 364 Mary G. Davis Military & Globa	14	100.0	450	439	416	889	1305
600 376 E E Waddell High	61	39.4	435	424	403	859	1262
600 377 East Mecklenburg High	254	68.8	507	492	476	999	1475
600 386 Hawthorne High/Taps	22	30.6	353	381	360	734	1094
600 405 Harding Univ High	177	82.7	477	461	442	938	1380
600 415 Hopewell High	360	68.2	499	490	473	989	1462
600 426 Independence High	251	51.0	456	445	436	901	1337
600 439 Turning Point Academy	2	10.5	*	*	*	*	*
600 445 Mallard Creek High	367	81.0	488	484	475	972	1447
600 466 Myers Park High	507	87.9	571	561	540	1132	1672
600 480 North Mecklenburg High	390	81.9	537	524	512	1061	1573
600 482 Northwest High	116	84.1	477	517	493	994	1487
600 496 Phillip O Berry High	208	75.1	461	456	440	917	1357
600 498 Performance Learning Center	12	23.5	528	583	553	1111	1664
600 508 Providence High	443	95.9	582	561	550	1143	1693
600 535 South Mecklenburg High	298	76.2	525	513	496	1038	1534
600 576 West Charlotte High	164	50.9	426	420	397	846	1243
600 579 West Mecklenburg High	176	53.0	437	425	408	862	1270
600 592 Zebulon B. Vance High	205	52.6	441	433	416	874	1290
600 690 Math & Science High At Garinge	34	50.0	420	396	380	816	1196
600 691 Leadership & Pub Ser High At G	25	37.3	366	372	364	738	1102
600 692 Finance School At Garinger	25	35.2	416	383	357	799	1156
600 693 Renaissance School At Olympic	46	63.0	468	474	444	942	1386
600 695 Int Studies & Global Economics	51	63.0	447	443	418	890	1308
600 696 Int Business & Communication S	53	59.6	431	410	408	841	1249
600 697 Biotechnology, Health, & Pub A	68	85.0	475	460	430	935	1365
600 698 New Technology High At Garinge	38	50.7	439	416	398	855	1253
600 699 Int Studies School Of Garinger	25	37.9	437	408	412	845	1257
60C Kennedy Charter	13	28.9	320	328	320	648	968
60D Lake Norman Charter	106	99.1	530	521	506	1051	1557
60E Queen's Grant Commun	50	82.0	516	511	497	1027	1524
60H Crossroads Charter H	15	22.4	353	352	347	705	1052
610 Mitchell County Scho	79	62.2	485	494	447	979	1426
610 334 Mitchell High	79	62.2	485	494	447	979	1426
620 Montgomery County Sc	110	43.3	446	418	417	864	1281
620 316 East Montgomery High	56	52.3	417	418	401	835	1236
620 340 West Montgomery High	54	47.8	477	419	434	896	1330
630 Moore County Schools	468	58.4	521	504	481	1025	1506
630 332 North Moore High	58	49.6	490	455	429	945	1374
630 336 Pinecrest High	294	68.2	530	518	497	1048	1545
630 360 Union Pines High	116	46.4	512	495	468	1007	1475
640 Nash-Rocky Mount Sch	577	51.9	485	460	438	945	1383
640 346 Nash Central High	126	50.2	470	447	418	917	1335
640 347 Nrm Early College High	48	81.4	466	470	446	936	1382
640 350 Northern Nash High	165	55.9	487	468	442	955	1397
640 361 Rocky Mount High	134	55.4	493	456	444	949	1393
640 364 Southern Nash Sr High	104	40.0	499	464	442	963	1405
64A Rocky Mount Preparat	32	68.1	447	460	411	907	1318
650 New Hanover County S	1013	65.8	524	506	483	1030	1513
650 326 Emsley A Laney High	214	59.0	494	481	466	975	1441
650 327 Eugene Ashley High	188	61.6	523	512	486	1035	1521
650 340 Isaac Bear Middle College High	50	86.2	559	548	514	1107	1621
650 342 John T Hoggard High	314	76.0	555	527	504	1082	1586
650 352 New Hanover High	232	71.2	506	491	464	997	1461
650 355 Mary S. Moseley Perf Learning	3	12.5	*	*	*	*	*
650 394 Wilmington Early College High	12	35.3	472	488	448	960	1408
660 Northampton County S	124	79.5	403	374	370	777	1147
660 336 Northampton High-East	63	69.2	409	375	380	784	1164
660 700 Northampton County High Schoo	61	98.4	396	373	360	769	1129
66A Gaston Prep Academy							
670 Onslow County School	785	61.3	497	479	454	976	1430
670 320 Dixon High	73	54.1	483	480	459	963	1422
670 324 Jacksonville High	154	77.0	501	485	457	986	1443
670 333 Northside High School	100	52.6	464	457	432	921	1353
670 340 Richlands High	100	54.9	513	489	459	1002	1461
670 344 Southwest High	88	62.4	471	458	433	929	1362
670 352 Swansboro High	100	54.9	530	504	475	1034	1509
670 364 White Oak High	170	68.0	505	478	459	983	1442
680 Orange County School	313	74.0	523	520	498	1043	1541
680 310 Cedar Ridge Hs	159	82.0	533	528	516	1061	1577
680 332 Orange Senior High	154	67.5	513	511	480	1024	1504
681 Chapel Hill-Carrboro	714	85.9	596	586	568	1182	1750
681 305 Carbaro High School	154	77.4	576	585	572	1161	1733
681 308 Chapel Hill High	251	88.7	597	580	560	1177	1737
681 314 East Chapel Hill High	306	91.3	607	593	574	1200	1774
681 338 Phoenix Academy High	3	23.1	*	*	*	*	*
68N Pace Academy	1	2.3	*	*	*	*	*
690 Pamlico County Schoo	41	43.2	526	494	454	1020	1474
690 320 Pamlico County High	41	43.2	526	494	454	1020	1474
700 Elizabeth City-Pasqu	233	58.0	464	456	432	920	1352
700 317 Northeastern High	142	66.0	463	458	434	921	1355
700 319 Pasquotank County High	91	50.6	466	454	428	920	1348
710 Pender County School	318	54.1	489	480	456	969	1425
710 321 Heide Trask High	42	33.1	461	446	413	907	1320
710 326 Pender High	91	61.1	459	437	418	896	1314

Notes: See footnotes on the last page of this file for detailed descriptions.

Table 7. SAT Performance by Students in North Carolina's Public School Systems and Schools, 2011

Revised September 22, 2011 at 12:30 p.m.

		2011						
School System & School		# Tested	% Tested	Math Score	CR Score ¹	Writing Score ²	M+CR ²	M+CR+W ³
United States (All Students)		1647123	50.0	514	497	489	1011	1500
North Carolina (All Students)		62149	67.0	508	493	474	1001	1475
710	327 Pender Early College High	32	45.7	467	498	477	965	1442
710	342 Topsail High	153	63.2	519	511	485	1030	1515
720	Perquimans County Sc	68	54.0	494	452	435	946	1381
720	316 Perquimans Co High	68	54.0	494	452	435	946	1381
730	Person County School	166	55.1	476	463	437	939	1376
730	352 Person High	166	55.1	476	463	437	939	1376
740	Pitt County Schools	806	62.3	506	484	460	990	1450
740	309 Ayden-Grifton High	48	44.4	451	444	415	895	1310
740	333 D H Conley High	187	70.6	525	499	470	1024	1494
740	344 Farmville Central High	83	50.3	492	463	437	955	1392
740	366 J H Rose High	221	70.4	548	529	512	1077	1589
740	374 North Pitt High	81	45.3	437	421	397	858	1255
740	388 South Central High	186	71.0	488	463	437	951	1388
750	Polk County Schools	105	62.1	508	487	459	995	1454
750	317 Polk Co. Virtual Early College	9	69.2	449	448	433	897	1330
750	318 Polk County High	96	61.5	513	491	461	1004	1465
760	Randolph County Scho	548	49.9	504	478	459	982	1441
760	318 Eastern Randolph High	73	49.3	485	451	432	936	1368
760	339 Providence Grove High	91	58.3	516	487	461	1003	1464
760	348 Randleman High	82	49.4	497	487	463	984	1447
760	354 Randolph Early College High	54	63.5	516	504	487	1020	1507
760	358 Southwestern High	97	41.5	509	487	461	996	1457
760	380 Trinity High	78	51.7	501	461	459	962	1421
760	388 Wheatmore High	73	46.2	505	472	457	977	1434
761	Asheboro City School	190	78.8	479	461	444	940	1384
761	304 Asheboro High	190	78.8	479	461	444	940	1384
770	Richmond County Scho	162	33.5	452	437	421	889	1310
770	348 Richmond Senior High	157	37.8	449	434	419	883	1302
770	349 Richmond Early College High	5	16.7	558	518	470	1076	1546
780	Public Schools Of Ro	536	37.9	450	419	405	869	1274
780	325 Fairmont High	57	47.9	435	408	401	843	1244
780	342 Lumberton Senior High	195	42.6	454	437	423	891	1314
780	385 Robeson County Early College	25	39.1	495	471	449	966	1415
780	391 Red Springs High	46	31.1	415	387	384	802	1186
780	401 Saint Pauls High	36	21.4	470	426	402	896	1298
780	402 South Robeson High	41	38.3	410	371	349	781	1130
780	420 Purnell Swett High	136	38.9	459	411	398	870	1268
790	Rockingham County Sc	431	55.2	487	471	456	958	1414
790	314 Dalton Mcmichael High	107	56.6	487	475	461	962	1423
790	354 John M Morehead High	112	56.6	481	469	460	950	1410
790	366 Reidsville High	87	50.3	464	442	423	906	1329
790	378 Rockingham Co High	125	57.6	508	489	472	997	1469
800	Rowan-Salisbury Scho	676	51.9	495	474	453	969	1422
800	340 East Rowan High	135	46.9	514	494	465	1008	1473
800	361 Jesse C. Carson High	139	51.7	483	466	445	949	1394
800	376 North Rowan High	59	50.0	480	448	442	928	1370
800	394 Rowan County Early College	1	*	*	*	*	*	*
800	396 Salisbury High	120	63.5	513	491	476	1004	1480
800	400 South Rowan High	87	45.8	507	475	462	982	1444
800	408 West Rowan High	135	56.7	471	455	428	926	1354
810	Rutherford County Sc	285	51.7	481	467	452	948	1400
810	324 Chase High	67	42.9	471	451	435	922	1357
810	340 East Rutherford High	102	75.0	460	443	434	903	1337
810	384 R S Central	88	47.8	496	489	472	985	1457
810	385 Rutherford County Early Col Hi	27	75.0	535	527	508	1062	1570
810	386 Rutherford Opportunity Center	1	2.6	*	*	*	*	*
81A	Thomas Jefferson Cla	56	100.0	535	533	509	1068	1577
820	Sampson County School	241	49.1	469	449	430	918	1348
820	324 Sampson Early College High	42	51.9	487	477	438	964	1402
820	348 Hobpton High	45	43.7	467	452	438	919	1357
820	349 Lakewood High	36	44.4	439	428	404	867	1271
820	352 Midway High	59	49.6	489	454	432	943	1375
820	388 Union High	59	55.1	458	436	434	894	1328
821	Clinton City Schools	86	52.8	477	463	456	940	1396
821	308 Clinton High	86	52.8	477	463	456	940	1396
830	Scotland County Scho	202	63.9	458	429	418	887	1305
830	316 East Laurinburg Alternative	1	7.7	*	*	*	*	*
830	348 Scotland Early College High	12	54.5	489	468	449	957	1406
830	700 Scotland High Of Health Sci	58	77.3	445	416	421	861	1282
830	702 Scotland High Sch Of Visual &	43	62.3	444	437	413	881	1294
830	704 Scotland High School Of Leader	50	66.7	443	408	402	851	1253
830	705 Scotland High School Of Math	38	61.3	504	455	431	959	1390
840	Stanly County School	339	57.0	495	465	442	960	1402
840	302 Albemarle High	80	74.1	448	425	409	873	1282
840	332 North Stanly High	77	54.2	484	457	435	941	1376
840	356 South Stanly High	35	42.7	538	494	446	1032	1478
840	361 Stanly Early College High Scho	39	84.8	494	471	450	965	1415
840	368 West Stanly High	108	51.7	524	490	468	1014	1482
84B	Gray Stone Day	66	100.0	552	564	545	1116	1661
850	Stokes County School	213	48.5	499	477	453	976	1429
850	332 N Stokes Mid/High	48	50.5	493	475	441	968	1409
850	352 South Stokes High	65	49.6	499	472	453	971	1424
850	358 West Stokes High	100	47.8	501	482	459	983	1442
860	Surry County Schools	224	40.3	516	486	465	1002	1467
860	316 East Surry High	68	51.9	530	495	469	1025	1494
860	336 North Surry High	71	38.8	508	469	456	977	1433
860	352 Surry Central High	58	42.6	512	473	444	985	1429
860	354 Surry Early College Hs Design	27	25.5	510	537	520	1047	1567
861	Elkin City Schools	58	69.9	521	507	478	1028	1506
861	308 Elkin High	58	69.9	521	507	478	1028	1506
862	Mount Airy City Scho	58	54.7	527	487	473	1014	1487
862	312 Mount Airy High	58	54.7	527	487	473	1014	1487
870	Swain County Schools	46	40.4	473	487	461	960	1421
870	314 Swain County High	46	41.4	473	487	461	960	1421
880	Transylvania County	141	61.8	516	502	469	1018	1487
880	308 Brevard High	106	72.1	525	511	475	1036	1511
880	328 Rosman Middle/High	35	53.8	489	476	449	965	1414
890	Tyrrell County Schoo	15	45.5	443	423	396	866	1262
890	304 Columbia High	15	45.5	443	423	396	866	1262

Notes: See footnotes on the last page of this file for detailed descriptions.

Table 7. SAT Performance by Students in North Carolina's Public School Systems and Schools, 2011

Revised September 22, 2011 at 12:30 p.m.

School System & School	2011						
	# Tested	% Tested	Math Score	CR Score ¹	Writing Score ²	M+CR ²	M+CR+W ³
United States (All Students)	1647123	50.0	514	497	489	1011	1500
North Carolina (All Students)	62149	67.0	508	493	474	1001	1475
900 Union County Public	1635	68.7	524	503	491	1027	1518
900 311 Cuthbertson High	140	82.8	528	508	506	1036	1542
900 316 Forest Hills High	91	46.2	469	434	427	903	1330
900 336 Monroe High	77	55.8	404	393	378	797	1175
900 342 Porter Ridge High	223	70.1	517	497	484	1014	1498
900 344 Parkwood High	116	58.6	505	487	485	992	1477
900 348 Piedmont High	143	65.3	518	483	455	1001	1456
900 360 Sun Valley High	166	56.3	523	500	497	1023	1520
900 366 Centralacademy Of Technology	129	72.1	536	513	495	1049	1544
900 366 Union Co Career Cntr	1	0.6	*	*	*	*	*
900 367 Union County Early College Hig	52	73.2	549	528	515	1077	1592
900 377 Weddington High	216	84.7	549	545	523	1094	1617
900 393 Marvin Ridge High	281	94.3	561	532	528	1093	1621
90A Union Academy	56	94.9	537	513	502	1050	1552
910 Vance County Schools	200	46.5	448	418	405	866	1271
910 364 Southern Vance High	95	53.7	444	403	399	847	1246
910 368 Western Vance High	1	4.3	*	*	*	*	*
910 370 Northern Vance High	104	45.2	453	432	412	885	1297
920 Wake County Schools	6577	75.9	544	521	503	1065	1568
920 316 Apex High	468	88.6	587	539	519	1126	1645
920 318 Athens Drive High	315	76.1	568	534	521	1102	1623
920 324 Longview School	2	20.0	*	*	*	*	*
920 348 Needham Broughton High	401	83.5	547	538	521	1085	1606
920 368 Cary High	289	67.7	554	535	499	1089	1588
920 412 William G Enloe High	495	80.5	580	574	556	1154	1710
920 428 Fuquay-Varina High	234	61.4	538	509	487	1047	1534
920 436 Garner High	301	65.6	499	473	447	972	1419
920 441 Green Hope High	445	93.1	593	550	544	1143	1687
920 455 Holly Springs High	322	79.1	531	514	493	1045	1538
920 466 Knightdale High	221	64.2	468	463	437	931	1368
920 473 Leesville Road High	463	82.7	562	536	521	1098	1619
920 495 Middle Creek High	275	78.6	536	520	501	1056	1537
920 500 Millbrook High	358	71.3	529	511	497	1040	1537
920 526 Panter Creek High School	461	88.0	564	543	530	1107	1637
920 528 Phillips High	5	8.8	362	332	314	694	1008
920 552 Sanderson High	276	71.9	535	516	495	1051	1546
920 562 Southeast Raleigh High	277	74.9	486	466	445	952	1397
920 583 Wake Early College Of Health A	50	89.3	496	506	500	1002	1502
920 588 Wake F-Rolesville High	302	71.7	515	502	478	1017	1495
920 595 Wakefield High	517	87.5	523	505	486	1028	1514
920 700 East Wake Health Science	33	45.8	472	415	426	887	1313
920 701 East Wake School Of Integrated	25	34.2	465	439	406	904	1310
920 702 East Wake School Of Arts Ed &	20	22.0	483	466	428	949	1377
920 703 East Wake School Of Engineerin	22	29.3	512	461	437	973	1410
92F Franklin Academy	63	96.9	535	541	514	1076	1590
92G East Wake Academy	49	87.5	476	492	483	968	1451
92K Raleigh Charter High	134	100.0	629	625	607	1254	1861
92P Southern Wake Academ	10	45.5	454	507	469	961	1430
930 Warren County School	117	74.1	419	408	399	827	1226
930 352 Warren County High	60	60.0	402	379	376	781	1157
930 700 Warren New Tech High	57	98.3	437	439	424	876	1300
93A Haliwa-Saponi Tribal	8	100.0	440	434	416	874	1290
940 Washington County Sc	71	51.4	424	405	398	829	1227
940 308 Creswell High	16	50.0	438	420	408	858	1266
940 316 Plymouth High	55	51.9	420	401	395	821	1216
950 Watauga County Schoo	216	79.1	544	540	506	1084	1590
950 336 Watauga High	216	79.1	544	540	506	1084	1590
960 Wayne County Public	567	48.0	487	463	441	950	1391
960 324 Charles B Aycock High	125	49.4	499	469	444	968	1412
960 330 Eastern Wayne High	123	53.5	500	467	453	967	1420
960 335 Goldsboro High	58	41.4	397	383	367	780	1147
960 372 Rosewood High	47	42.0	489	486	454	975	1429
960 380 Southern Wayne High	87	43.1	465	449	425	914	1339
960 386 Spring Creek High	47	46.5	495	463	441	958	1399
960 490 Wayne Early/Middle College	40	69.0	556	536	514	1092	1606
960 700 Wayne School Of Engineering At	40	69.0	505	472	443	977	1420
970 Wilkes County School	268	50.3	521	498	473	1019	1492
970 320 East Wilkes High	49	49.5	512	507	486	1019	1505
970 356 North Wilkes High	44	35.5	519	500	474	1019	1493
970 388 West Wilkes High	59	45.0	532	494	471	1026	1497
970 390 Wilkes Central High	116	64.8	519	495	469	1014	1483
980 Wilson County School	396	54.2	493	468	449	961	1410
980 318 Beddingfield High	84	42.9	487	445	429	932	1361
980 336 Fike High	156	55.7	502	474	461	976	1437
980 342 Hunt High	156	61.4	487	474	449	961	1410
990 Yadkin County School	190	48.7	512	484	462	996	1458
990 322 Forbush High	105	52.8	516	481	461	997	1458
990 326 Starmount High	70	44.6	510	486	463	996	1459
990 332 Yadkin Early College	15	45.5	499	493	469	992	1461
995 Yancey County School	72	51.1	538	504	483	1042	1525
995 330 Moutain Heritage High	72	51.1	538	504	483	1042	1525

¹CR=Critical Reading; ²M+CR=Math + Critical Reading; ³M+CR+W=Math+Critical Reading+Writing.

⁴The scores for Gaston College Preparatory were unavailable at the time of posting.

Note: United States and North Carolina totals include all schools (public and non-public). Percent tested is the number of students taking the SAT divided by the 8th month 12th grade membership; An asterisk (*) indicates that there were fewer than five test-takers.

SPECIAL NOTICE: Only 2011 SAT results are reported for schools and LEAs because the College Board changed its rules for reporting SAT scores. In 2010, the College Board began including students in its cohort who took the SAT through March and students who took it through June, but only the scores for students who took the test through March were reported, to be consistent with previous years. Scores reported by the College Board in 2011 included all test-takers through June, and are therefore not comparable with scores from previous years. Adjusted scores for schools and systems dating back to 2007 that include all students who tested through June will be provided at a later date. See the [Special Notice](#) on Page 7 for more details.

Table 8. Distribution of North Carolina's Public School Systems by Mean Total SAT Scores (Critical Reading + Mathematics), 2010-2011

	Score	School System
	1340	NC School Of Science & Math
	...	
	1260	Raleigh Charter High
	...	
	1190	Chapel Hill-Carrboro
	...	
	1140	NC School Of The Arts, Woods Charter
	...	
	1120	Gray Stone Day
	...	
	1090	Pine Lake Preparator, Watauga County School
	1080	Franklin Academy
	1070	Asheville City Schoo, Thomas Jefferson Cla, Wake County Schools
	1060	Buncombe County Scho, Lake Norman Charter, The Hawbridge School
	1050	Carteret County Publ, Haywood County Schoo, Hickory City Schools, Orange County School, Union Academy, Yancey County School
	1040	Davie County Schools, Henderson County Sch
	1030	Elkin City Schools, Iredell-Statesville, Moore County Schools, New Hanover County S, Queen's Grant Commun, Union County Public
2011 United States (1011)	1020	Avery County Schools, Cabarrus County Scho, Clay County Schools, Dare County Schools, Mount Airy City Scho, Pamlico County Schoo, Piedmont Community C, Transylvania County, Wilkes County School
2011 North Carolina (1001)	1010	Ashe County Schools, Catawba County Schoo, Charlotte-Mecklenbur, Clover Garden, Currituck County Sch, Jackson County Schoo, Johnston County Scho, Madison County School, Surry County Schools
2011 Southeast (988)	1000	Craven County School, Davidson County Scho, Forsyth County School, Lincoln Charter Scho, Lincoln County Schoo, Macon County Schools, Polk County Schools, Yadkin County School
	990	Burke County Schools, Caldwell County Scho, Graham County School, Mooresville City Sch, Pitt County Schools, Randolph County Scho
	980	Alleghany County Sch, Chatham County Schoo, Gaston County School, Guilford County Scho, Lee County Schools, Mcdowell County Scho, Mitchell County Scho, Newton Conover City, Onslow County School
	970	Brunswick County Sch, Cherokee County Scho, Cleveland County Sch, East Wake Academy, Pender County School, Rowan-Salisbury Scho, Southern Wake Academ, Wilson County School
	960	Alexander County Sch, Camden County School, Durham Public School, Franklin County Scho, Rockingham County Sc, Stanly County School, Swain County Schools
	950	Beaufort County Scho, Cumberland County Sc, Nash-Rocky Mount Sch, Perquimans County Sc, River Mill Academy, Rutherford County Sc, Wayne County Public
	940	Asheboro City School, Clinton City Schools, Gates County Schools, Granville County Sch, Harnett County Schoo, Kannapolis City Scho, Person County School
	930	Roanoke Rapids City
	920	Elizabeth City-Pasqu, Hyde County Schools, Lenoir County Public, Martin County School, Sampson County Schoo, Whiteville City Scho
	910	Columbus County Scho, Duplin County School, Edgecombe County Pub, Jones County Schools, Rocky Mount Preparat
	900	Edenton-Chowan Schoo, Hoke County Schools, Lexington City Schoo
	890	Caswell County Schoo, Kestrel Heights Scho, Richmond County Scho, Scotland County Scho
	880	Haliwa-Saponi Tribal
	870	Anson County Schools, Bladen County School, Montgomery County Sc, Public Schools Of Robeson, Thomasville City Sch, Tyrrell County Schoo, Vance County Schools
	860	Greene County School
	...	
	830	Warren County School, Washington County Sc
	...	
	810	Hertford County Scho
	800	Bertie County School
	790	Halifax County Schoo
	780	Carter G Woodson Sch, Crossnore Academy, Northampton County S
	...	
	740	Weldon City Schools
	...	
	710	Crossroads Charter H
	...	
	650	Kennedy Charter
	***	Cape Lookout Marine, Greensboro Area Math Sci Ed Cr, Pace Academy

United States, North Carolina, and Southeast total scores include both public and non-public schools.

Performance of the Fifty States

Table 9. Mean Critical Reading (CR), Mathematics (M), Writing (W), CR + M, and CR + M + W Scores and Percent Tested by State, 2010-2011

State	Percent Tested ¹	Critical Reading (CR) Mean	Mathematics (M) Mean	Writing (W) Mean	CR+M	CR+M+W
Alabama	8%	546	541	536	1087	1623
Alaska	52%	515	511	487	1026	1513
Arizona	28%	517	523	499	1040	1539
Arkansas	5%	568	570	554	1138	1692
California	53%	499	515	499	1014	1513
Colorado	19%	570	573	556	1143	1699
Connecticut	87%	509	513	513	1022	1535
Delaware	74%	489	490	476	979	1455
District of Columbia	79%	469	457	459	926	1385
Florida	64%	487	489	471	976	1447
Georgia	80%	485	487	473	972	1445
Hawaii	64%	479	500	469	979	1448
Idaho	20%	542	539	517	1081	1598
Illinois	5%	599	617	591	1216	1807
Indiana	68%	493	501	475	994	1469
Iowa	3%	596	606	575	1202	1777
Kansas	7%	580	591	563	1171	1734
Kentucky	6%	576	572	563	1148	1711
Louisiana	8%	555	550	546	1105	1651
Maine	93%	469	469	453	938	1391
Maryland	74%	499	502	491	1001	1492
Massachusetts	89%	513	527	509	1040	1549
Michigan	5%	583	604	573	1187	1760
Minnesota	7%	593	608	577	1201	1778
Mississippi	4%	564	543	553	1107	1660
Missouri	5%	592	593	579	1185	1764
Montana	26%	539	537	516	1076	1592
Nebraska	5%	585	591	569	1176	1745
Nevada	47%	494	496	470	990	1460
New Hampshire	77%	523	525	511	1048	1559
New Jersey	78%	495	516	497	1011	1508
New Mexico	12%	548	541	529	1089	1618
New York	89%	485	499	476	984	1460
North Carolina	67%	493	508	474	1001	1475
North Dakota	3%	586	612	561	1198	1759
Ohio	21%	539	545	522	1084	1606
Oklahoma	6%	571	565	547	1136	1683
Oregon	56%	520	521	499	1041	1540
Pennsylvania	73%	493	501	479	994	1473
Rhode Island	68%	495	493	489	988	1477
South Carolina	70%	482	490	464	972	1436
South Dakota	4%	584	591	562	1175	1737
Tennessee	10%	575	568	567	1143	1710
Texas	58%	479	502	465	981	1446
Utah	6%	563	559	545	1122	1667
Vermont	67%	515	518	505	1033	1538
Virginia	71%	512	509	495	1021	1516
Washington	57%	523	529	508	1052	1560
West Virginia	17%	514	501	497	1015	1512
Wisconsin	5%	590	602	575	1192	1767
Wyoming	5%	572	569	551	1141	1692
United States	50%	497	514	489	1011	1500

¹The percent of high school graduates tested is based upon the recently revised projection of high school graduates in 2011 by the Western Interstate Commission for Higher Education (WICHE), and the number of students in the class of 2011 who took the SAT Reasoning Test in each state. Updated projections make it inappropriate to compare percentages for any given year with those of other years.

SOURCE: "Knocking at the College Door: Projections of High School Graduates by State and Race/Ethnicity, 1992-2022," Western Interstate Commission for Higher Education (WICHE), March 2008.

Table 10. Change in Mean Total SAT Scores [Critical Reading (CR) + Mathematics (M)] by State, 1990-2011

State	Percent Tested ¹ 2011	CR+M 1990	CR+M 2011	Change from 1990 to 2011
Alabama	8%	1079	1087	8
Alaska	52%	1015	1026	11
Arizona	28%	1041	1040	-1
Arkansas	5%	1077	1138	61
California	53%	1002	1014	12
Colorado	19%	1067	1143	76
Connecticut	87%	1002	1022	20
Delaware	74%	1006	979	-27
District of Columbia	79%	950	926	-24
Florida	64%	988	976	-12
Georgia	80%	951	972	21
Hawaii	64%	985	979	-6
Idaho	20%	1066	1081	15
Illinois	5%	1089	1216	127
Indiana	68%	972	994	22
Iowa	3%	1172	1202	30
Kansas	7%	1129	1171	42
Kentucky	6%	1089	1148	59
Louisiana	8%	1088	1105	17
Maine	93%	991	938	-53
Maryland	74%	1008	1001	-7
Massachusetts	89%	1001	1040	39
Michigan	5%	1063	1187	124
Minnesota	7%	1110	1201	91
Mississippi	4%	1090	1107	17
Missouri	5%	1089	1185	96
Montana	26%	1082	1076	-6
Nebraska	5%	1121	1176	55
Nevada	47%	1022	990	-32
New Hampshire	77%	1028	1048	20
New Jersey	78%	993	1011	18
New Mexico	12%	1100	1089	-11
New York	89%	985	984	-1
North Carolina	67%	948	1001	53
North Dakota	3%	1157	1198	41
Ohio	21%	1048	1084	36
Oklahoma	6%	1095	1136	41
Oregon	56%	1024	1041	17
Pennsylvania	73%	987	994	7
Rhode Island	68%	986	988	2
South Carolina	70%	942	972	30
South Dakota	4%	1150	1175	25
Tennessee	10%	1102	1143	41
Texas	58%	979	981	2
Utah	6%	1121	1122	1
Vermont	67%	1000	1033	33
Virginia	71%	997	1021	24
Washington	57%	1024	1052	28
West Virginia	17%	1034	1015	-19
Wisconsin	5%	1111	1192	81
Wyoming	5%	1072	1141	69
United States	50%	1001	1011	10

¹The percent of high school graduates tested is based upon the recently revised projection of high school graduates in 2008 by the Western Interstate Commission for Higher Education (WICHE), and the number of students in the class of 2008 who took the SAT Reasoning Test in each state. Updated projections make it inappropriate to compare percentages for any given year with those of other years.

CR = Critical Reading; M = Math

SOURCE: "Knocking at the College Door: Projections of High School Graduates by State and Race/Ethnicity 1992-2022," Western Interstate Commission for Higher Education (WICHE), March 2008.

Table 11. **Public and Non-Public Schools: Mean SAT Reasoning Test™ Critical Reading, Mathematics, and Writing Scores by State, with Changes for 2011, 2010, and 2001.**

STATE	Participation Rate 2011 ¹	2011			2010			One-Year Change			2001		Ten-Year Change	
		Critical Reading	Math	Writing	Critical Reading	Math	Writing	Critical Reading	Math	Writing	Critical Reading	Math	Critical Reading	Math
		Mean	Mean	Mean	Mean	Mean	Mean	Mean	Mean	Mean	Mean	Mean	Mean	Mean
Maine	93%	469	469	453	468	467	454	1	2	-1	506	500	-37	-31
Massachusetts	89%	513	527	509	512	526	509	1	1	0	511	515	2	12
New York	89%	485	499	476	483	498	477	2	1	-1	495	505	-10	-6
Connecticut	87%	509	513	513	509	513	512	0	0	1	509	510	0	3
Georgia	80%	485	487	473	488	489	474	-3	-2	-1	491	489	-6	-2
District of Columbia ²	79%	469	457	459	472	462	464	-3	-5	-5	482	474	-13	-17
New Jersey	78%	495	516	497	495	514	497	0	2	0	499	513	-4	3
New Hampshire	77%	523	525	511	520	523	510	3	2	1	520	516	3	9
Delaware	74%	489	490	476	492	494	480	-3	-4	-4	501	499	-12	-9
Maryland	74%	499	502	491	500	505	493	-1	-3	-2	508	510	-9	-8
Pennsylvania	73%	493	501	479	491	500	479	2	1	0	500	499	-7	2
Virginia	71%	512	509	495	511	511	496	1	-2	-1	510	501	2	8
South Carolina	70%	482	490	464	483	494	466	-1	-4	-2	486	488	-4	2
Indiana	68%	493	501	475	493	503	476	0	-2	-1	499	501	-6	0
Rhode Island	68%	495	493	489	494	494	488	1	-1	1	501	499	-6	-6
North Carolina	67%	493	508	474	495	509	476	-2	-1	-2	493	499	0	9
Vermont	67%	515	518	505	518	520	505	-3	-2	0	511	506	4	12
Florida	64%	487	489	471	495	496	478	-8	-7	-7	498	499	-11	-10
Hawaii	64%	479	500	469	482	504	470	-3	-4	-1	486	515	-7	-15
Texas	58%	479	502	465	483	504	472	-4	-2	-7	493	499	-14	3
Washington	57%	523	529	508	524	531	507	-1	-2	1	527	527	-4	2
Oregon	56%	520	521	499	522	523	498	-2	-2	1	526	526	-6	-5
California	53%	499	515	499	501	516	500	-2	-1	-1	498	517	1	-2
Alaska	52%	515	511	487	516	513	489	-1	-2	-2	514	510	1	1
Nevada	47%	494	496	470	494	499	471	0	-3	-1	509	515	-15	-19
Arizona	28%	517	523	499	518	524	498	-1	-1	1	523	525	-6	-2
Montana	26%	539	537	516	537	537	515	2	0	1	539	539	0	-2
Ohio	21%	539	545	522	538	547	522	1	-2	0	534	539	5	6
Idaho	20%	542	539	517	542	540	517	0	-1	0	543	542	-1	-3
Colorado	19%	570	573	556	567	572	554	3	1	2	539	542	31	31
West Virginia	17%	514	501	497	513	504	498	1	-3	-1	527	512	-13	-11
New Mexico	12%	548	541	529	551	547	532	-3	-6	-3	551	542	-3	-1
Tennessee	10%	575	568	567	574	570	564	1	-2	3	562	553	13	15
Alabama	8%	546	541	536	556	550	543	-10	-9	-7	559	554	-13	-13
Louisiana	8%	555	550	546	554	548	545	1	2	1	564	562	-9	-12
Kansas	7%	580	591	563	589	595	567	-9	-4	-4	577	580	3	11
Minnesota	7%	593	608	577	593	606	578	0	2	-1	580	589	13	19
Kentucky	6%	576	572	563	575	574	562	1	-2	1	550	550	26	22
Oklahoma	6%	571	565	547	567	566	544	4	-1	3	567	561	4	4
Utah	6%	563	559	545	565	557	544	-2	2	1	575	570	-12	-11
Arkansas	5%	568	570	554	564	564	550	4	6	4	562	550	6	20
Illinois	5%	599	617	591	585	600	577	14	17	14	576	589	23	28
Michigan	5%	583	604	573	583	603	574	0	1	-1	561	572	22	32
Missouri	5%	592	593	579	593	595	580	-1	-2	-1	577	577	15	16
Nebraska	5%	585	591	569	583	592	568	2	-1	1	562	568	23	23
Wisconsin	5%	590	602	575	593	603	578	-3	-1	-3	584	596	6	6
Wyoming	5%	572	569	551	568	565	543	4	4	8	547	545	25	24
Mississippi	4%	564	543	553	564	547	550	0	-4	3	566	551	-2	-8
South Dakota	4%	584	591	562	591	601	566	-7	-10	-4	577	582	7	9
Iowa	3%	596	606	575	600	611	580	-4	-5	-5	593	603	3	3
North Dakota	3%	586	612	561	578	593	556	8	19	5	592	599	-6	13
United States	50%	497	514	489	500	515	491	-3	-1	-2	506	514	-9	0

¹Based on projections of high school graduates in 2008 as published in "Knocking at the College Door: Projections of High School Graduates by State and Race/Ethnicity, 1992-2022." Western Interstate Commission for Higher Education (WICHE), March 2009 and the number of students in the class of 2009 who took the SAT Reasoning Test in each state.

Note: The College Board strongly discourages the comparison or ranking of states on the basis of SAT scores alone.

SOURCE: The College Board. (2011, September). *SAT Trends Background on the SAT Takers in the Class of 2011*. P. 13. New York: Author.

Table 12. **Public Schools: Mean SAT Reasoning Test™ Critical Reading, Mathematics, and Writing Scores by State, with Changes for 2011, 2010, and 2007.**

STATE	Participation Rate 2011 ¹	2011			2010			One-Year Change			2007		Five-Year Change	
		Critical Reading	Math	Writing	Critical Reading	Math	Writing	Critical Reading	Math	Writing	Critical Reading	Math	Critical Reading	Math
		Mean	Mean	Mean	Mean	Mean	Mean	Mean	Mean	Mean	Mean	Mean	Mean	Mean
Maine	100%	465	462	448	464	460	448	1	2	0	460	461	5	4
New York	85%	480	497	470	482	500	474	-2	-3	-4	485	485	-5	-5
Massachusetts	84%	505	521	500	508	523	504	-3	-2	-4	505	499	0	6
Connecticut	81%	502	505	506	504	509	508	-2	-4	-2	500	500	2	2
Georgia	74%	481	483	467	483	486	470	-2	-3	-3	487	487	-6	-6
New Jersey	74%	492	516	494	495	518	497	-3	-2	-3	490	484	2	8
New Hampshire	73%	514	516	502	513	518	502	1	-2	0	510	510	4	4
Delaware	69%	471	475	455	476	480	461	-5	-5	-6	478	477	-7	-6
Maryland	69%	492	497	483	494	501	487	-2	-4	-4	490	491	2	1
Pennsylvania	68%	490	500	475	490	501	477	0	-1	-2	488	487	2	3
Indiana	67%	489	499	471	490	501	472	-1	-2	-1	491	493	-2	-4
Virginia	67%	509	507	492	510	511	494	-1	-4	-2	506	509	3	0
Vermont	65%	516	517	505	522	522	508	-6	-5	-3	515	516	1	0
North Carolina	64%	489	507	469	493	509	472	-4	-2	-3	490	506	-1	3
South Carolina	64%	479	489	459	481	495	463	-2	-6	-4	484	486	-5	-7
Rhode Island	64%	482	482	474	484	487	477	-2	-5	-3	483	489	-1	-7
Florida	62%	483	486	466	492	495	474	-9	-9	-8	491	489	-8	-6
Texas	54%	475	500	461	480	502	468	-5	-2	-7	485	477	-10	-2
Hawaii	52%	454	474	441	460	478	442	-6	-4	-1	458	458	-4	-4
Washington	51%	521	527	505	522	530	505	-1	-3	0	522	521	-1	0
Oregon	50%	516	520	494	519	521	494	-3	-1	0	518	519	-2	-3
California	48%	494	513	494	500	519	499	-6	-6	-5	492	493	2	1
Alaska	46%	516	514	488	518	517	492	-2	-3	-4	516	517	0	-1
Nevada	43%	493	495	468	493	499	470	0	-4	-2	497	501	-4	-8
District of Columbia	41%	415	404	401	414	405	401	1	-1	0	414	409	1	6
Arizona	24%	515	523	496	516	525	497	-1	-2	-1	515	516	0	-1
Montana	23%	539	540	515	537	541	516	2	-1	-1	538	545	1	-6
Idaho	18%	542	541	517	543	542	517	-1	-1	0	538	539	4	3
Ohio	16%	535	545	516	536	549	517	-1	-4	-1	530	530	5	5
Colorado	16%	574	580	560	574	581	560	0	-1	0	562	562	12	12
West Virginia	15%	511	499	494	514	506	498	-3	-7	-4	512	516	-1	-5
New Mexico	9%	535	530	514	541	536	518	-6	-6	-4	541	539	-6	-4
Alabama	7%	539	538	530	548	547	536	-9	-9	-6	558	556	-19	-17
Kansas	6%	590	598	569	602	603	578	-12	-5	-9	586	586	4	4
Minnesota	5%	601	610	578	603	612	585	-2	-2	-7	595	594	6	7
Tennessee	5%	577	570	565	574	572	562	3	-2	3	571	576	6	1
Louisiana	5%	545	543	528	546	543	531	-1	0	-3	565	566	-20	-21
Wyoming	5%	575	575	555	572	566	545	3	9	10	562	570	13	5
Kentucky	4%	578	580	563	576	583	562	2	-3	1	562	563	16	15
Illinois	4%	608	633	598	589	611	581	19	22	17	602	601	6	7
Utah	4%	585	580	565	587	578	565	-2	2	0	584	589	1	-4
Oklahoma	4%	568	560	541	566	567	541	2	-7	0	571	572	-3	-4
Michigan	4%	583	608	572	584	609	575	-1	-1	-3	561	552	22	31
Nebraska	4%	582	590	565	580	593	563	2	-3	2	574	572	8	10
Arkansas	4%	568	573	553	568	568	552	0	5	1	577	564	-9	4
Wisconsin	4%	595	606	577	605	613	588	-10	-7	-11	592	593	3	2
South Dakota	3%	590	594	565	598	603	572	-8	-9	-7	589	597	1	-7
Iowa	3%	602	612	581	614	624	594	-12	-12	-13	610	608	-8	-6
Mississippi	3%	549	529	540	551	534	539	-2	-5	1	564	560	-15	-11
Missouri	3%	592	592	573	589	592	571	3	0	2	591	593	1	-1
North Dakota	3%	593	620	570	582	598	560	11	22	10	581	566	12	27
United States	42%	494	506	483	497	510	486	-3	-4	-3	501	514	-7	-8

¹Based on projections of high school graduates in 2008 as published in "Knocking at the College Door: Projections of High School Graduates by State and Race/Ethnicity 1992-2022," Western Interstate Commission for Higher Education (WICHE), March 2008 and the number of students in the class of 2008 who took the SAT Reasoning Test in each state.

Note: The College Board strongly discourages the comparison or ranking of states on the basis of SAT scores alone.

SOURCE: The College Board. (2011, September) *SAT Trends: Background on the SAT Takers in the Class of 2011*. New York, New York.