



Public Schools of North Carolina

Responsiveness to Instruction (RtI)

Ending with the Core in Mind

North Carolina Department of Public Instruction
2011

Assessments within Rtl

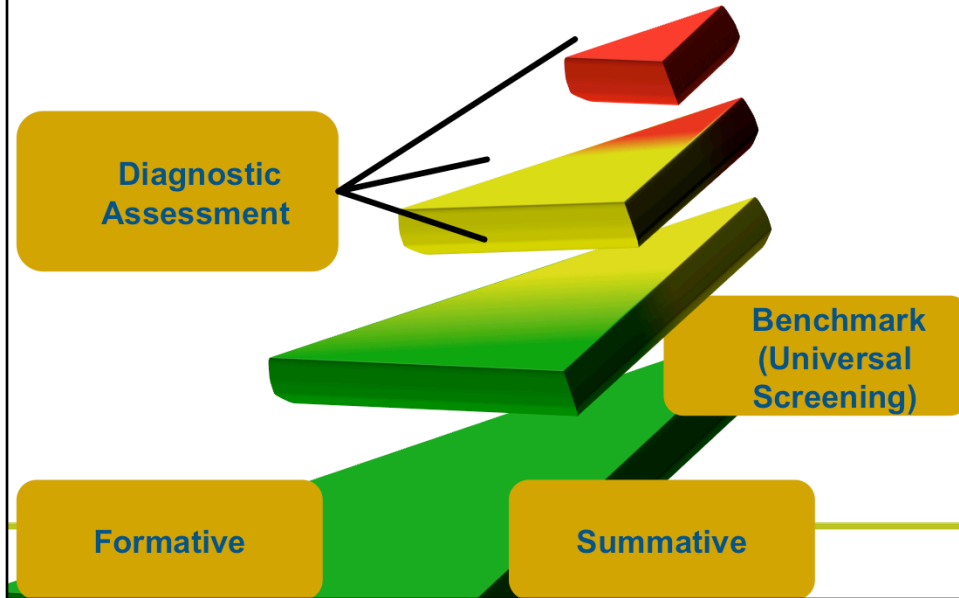


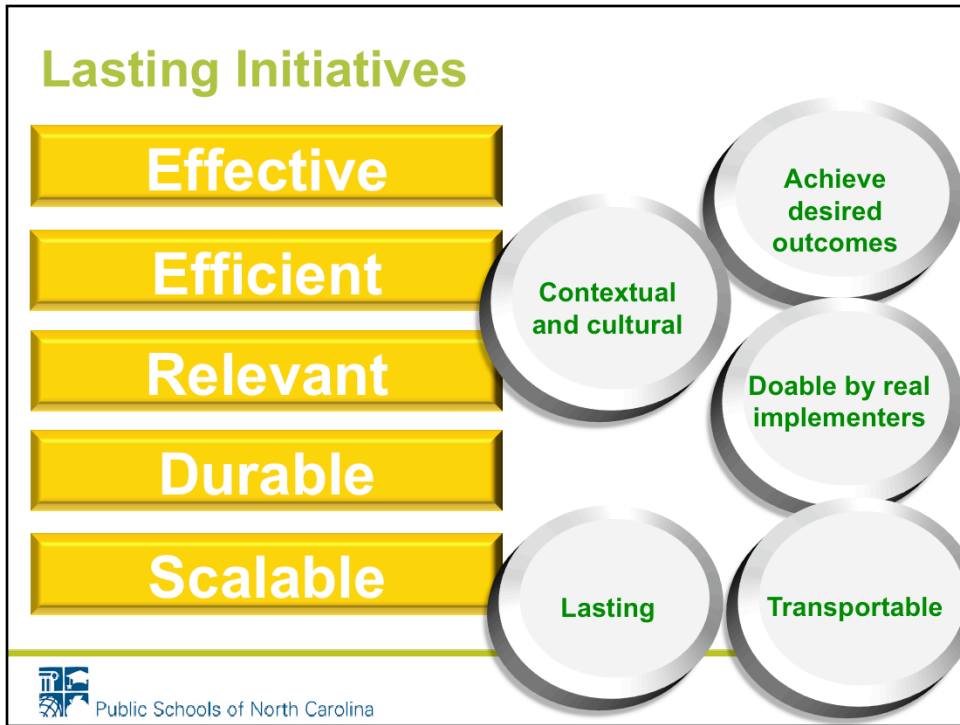
Table Talk

Turn and talk about what assessments you already have for your schools that are

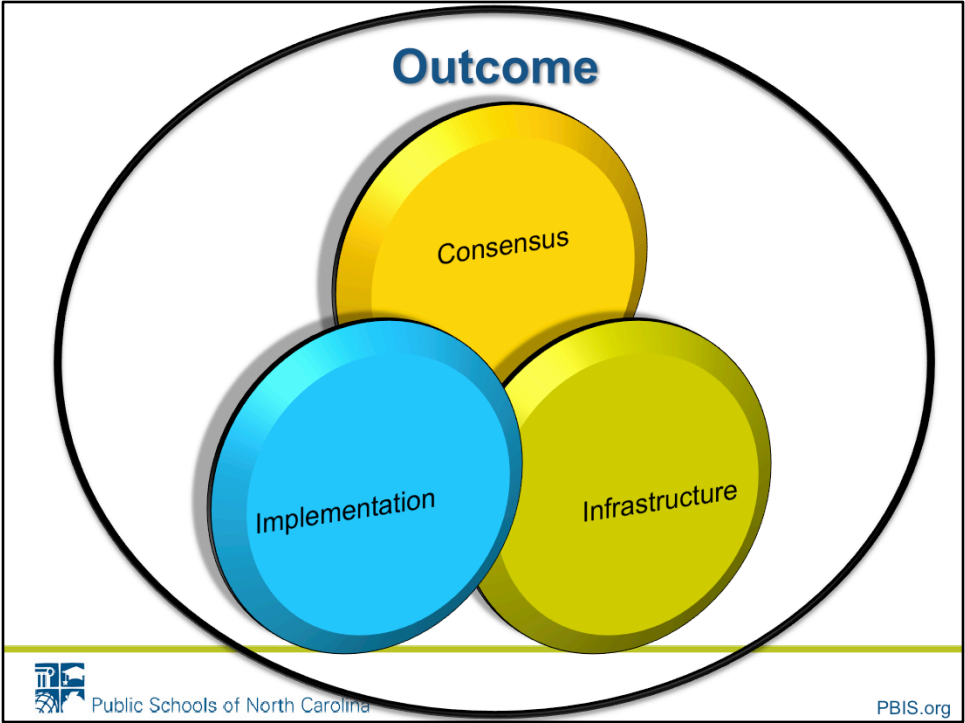
1. Formative
2. Summative
3. Diagnostic
4. Benchmark (universal screening)

Use the sticky notes on your table to put into four columns on your chart paper.



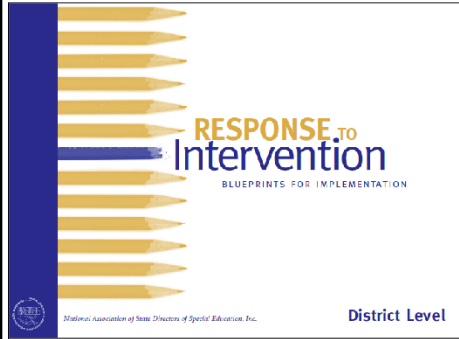


Adapted from Horner & OR, 2009

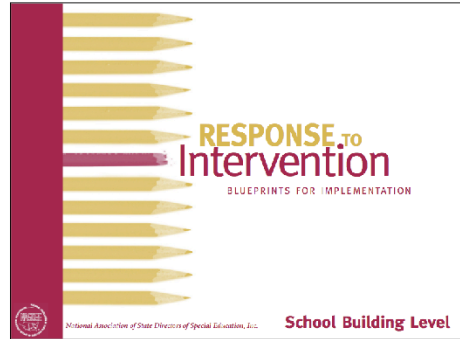


Blueprints for Implementation

District Level



School Level



<http://www.nasdse.org/Portals/0/DISTRICT.pdf>

<http://www.nasdse.org/Portals/0/SCHOOL.pdf>



Public Schools of North Carolina

Created to provide concrete guidance to implementation sites.
Everyone should either have a hard copy or an electronic version of a copy.
Participants were asked to make a hard copy if desired.

Team Time

Work with your team to determine:

1. Steps in building consensus
2. Critical elements to build infrastructure
3. Time frame for completing self assessment
4. Barriers in creating a successful school improvement model

