

Sudan Lesson #1: Demographic and Map Skills

Date:		Subject: Sudan- Demographics/Map Skills NCSCOS: Competency Goal Objectives- 1.01,1.02, 2.01, 2.02, 2.03, 3.01, 4.01, 4.02, 5.03, 8.02, 11.02	Warm – Up/Bell ringer: List as many types of geographic features and regions as you can for the US or the most recent country that you have studied
Materials Needed	Time – Pacing	Link(s) to Prior Learning: General map skills, such as interpreting symbols in the key or using the scale, as well as knowledge of grasslands, rainforest, bushland, sahel, and desertification.	Continuous Assessment - tools/strategies
Class set of Sudan Map Sheets in color Sudan Demographic/Map Skills Sheet Sudan outline map	45 minutes <u>Warm-Up</u> 3 – 5 minutes <u>Guided Practice</u> 20 – 25 minutes <u>Independent Practice</u> 15 – 20 minutes <u>Summary/Closure</u> 3 – 5 minutes 90 minutes (Block/Flexible Schedule) You may wish to expand the times from above for each.	Purpose/Objective of this lesson: To examine the regions of Sudan and their populations. To analyze the physical make-up of the geography of Sudan and its affects upon its populations. Teacher Input <ul style="list-style-type: none"> • Sudan Demographic/Map Skills Sheet • Sudan Map Sheets • Teacher Discussion Questions Sheet • Geographic terms and definitions as needed Key Questions: <ul style="list-style-type: none"> • How does the geography of a region affect the quality of life for its inhabitants? How does the vegetation and availability of water affect a region’s population? • How do the boundaries of a region affect its population? • How are the lives of the different populations in the Sudan similar and different? • How might desertification affect the herders and the farmers of Darfur? Strategies for Differentiation: Pairing lower level students with higher level students may work well with this lesson.	What types of human activity might cause desertification? What geographical differences in the Sudan might explain a cultural division between north and south?

Sudan Lesson #1: Demographic and Map Skills

		<p>Class Activity:</p> <p>Guided Practice</p> <ul style="list-style-type: none"> • Laminate or place in a plastic sheet protector, the class set of Sudan Map Sheets. • Distribute to each student: <ol style="list-style-type: none"> 1. Sudan Map Sheets 2. Sudan Demographic/Map Skills Sheet <p>Independent Practice</p> <ul style="list-style-type: none"> • Students will use the Map Sheets to complete the Demographic/Map Skills Sheet. <p>Summary/Closure:</p> <ul style="list-style-type: none"> • Have students create a thinking/ bubble map on the board or overhead that reflects key features of Sudan's geographic features. Students should explain the importance of the feature they have chosen. • Review Key Questions <p>Homework: As needed for the unit</p>
--	--	---

Reflection:

Differentiation					Student Engagement					Higher Order Thinking					Transition				
1	2	3	4	5	1	2	3	4	5	1	2	3	4	5	1	2	3	4	5

Notes and Comments:

To conserve resources, I would recommend only making a class set of map packets. Students with IEPs and/or 504 plans stating that they receive a copy of all materials should therefore receive their own copies. Depending on your resources, you may wish to place your students into pairs or groups to complete this assignment.

If at all possible, do print the Sudan Map Sheets out in color. Grayscale loses some of the important features needed for this lesson.

Resources:

Select Maps of the Sudan. <http://www.sudan.net/government/vegmap.html>

Selected Maps of the Sudan <http://www.sudan.net/government/regmap.html>

Sudan Maps. World Atlas. <http://www.graphicmaps.com/aatlas/africa/maps/sudan.htm>

Sudan Outline Map. Enchanted Learning

<http://www.enchantedlearning.com/africa/sudan/outlinemap/index.shtml>

Desertification definition, explanation, and examples: <http://en.wikipedia.org/wiki/Desertification>

Additional resources concerning Sudan:

<http://hrw.org/doc?t=africa&c=darfur> Human Rights Watch on Darfur

<http://www.savedarfur.org/home> Save Darfur advocates raising awareness of the ongoing

Sudan Lesson #1: Demographic and Map Skills

genocide

<http://www.ushmm.org/conscience/> Responses Genocide for comparison, section on Darfur

<http://www.ushmm.org/conscience/alert/darfur/> US Holocaust Memorial Museum – background information on the crisis in Darfur

<http://www.standnow.org/learn/situation.html> Stand Now also offers persuasive reasons for global intervention in the genocide taking place in Darfur

<http://www.globalsecurity.org/military/world/para/darfur.htm> offers a detailed description of the roots of the Darfur conflict, the different groups involved and a brief history of Darfur since 1596

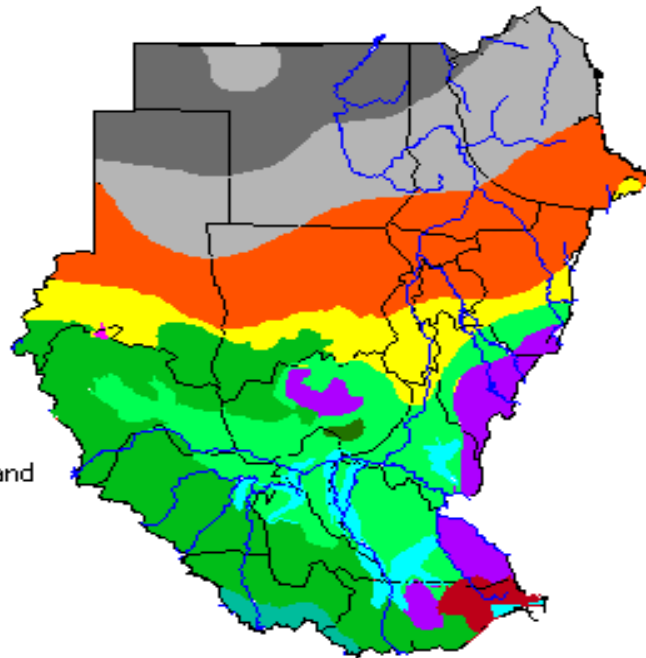
<http://www.pbs.org/newshour/bb/africa/darfur/> Streaming video and transcripts of Newshour segments on Darfur

Sudan Lesson #1: Demographic and Map Skills

Sudan Vegetation Map

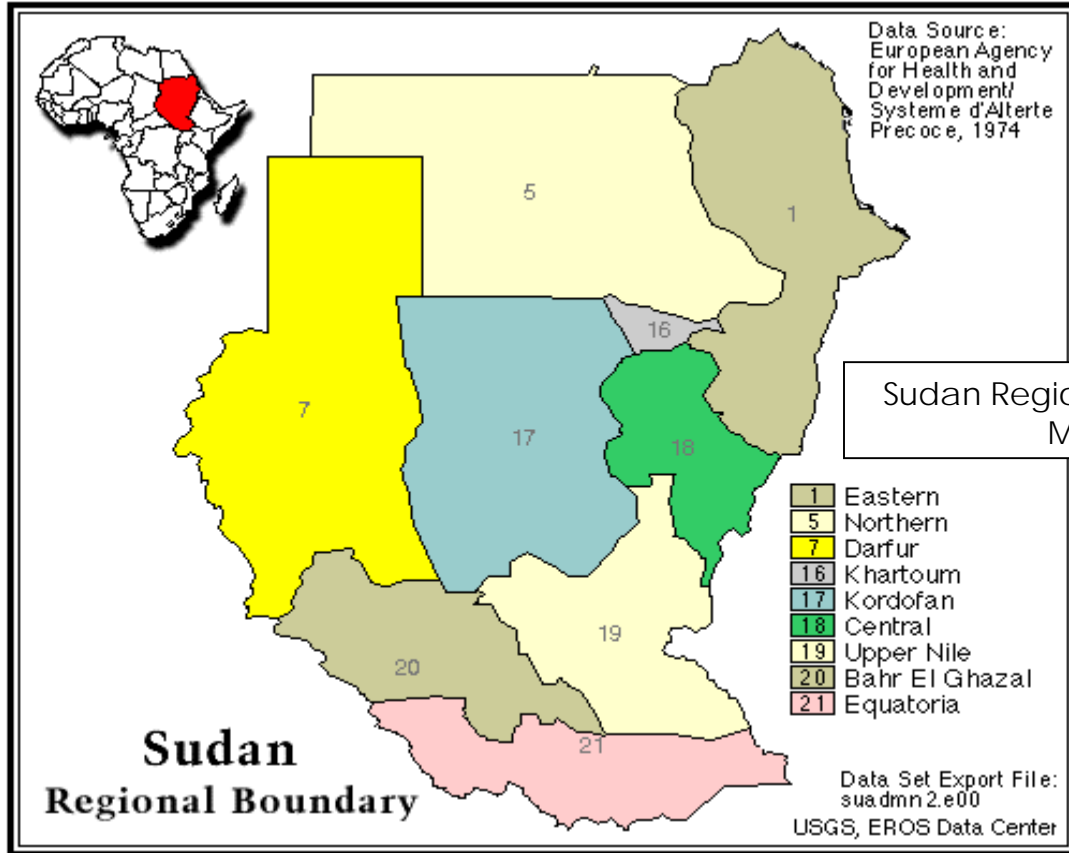
SUDAN: vegetation cover

- Absolute desert
- Desert dunes without perennial
- Semi-desert grassland and shrubland
- Acacia wooded grassland and bushland
- Woodland
- Edaphic grassland mosaics with trees
- Transition woodland to bushland
- Grassland with semi-aquatic vegetation
- Mosaic of lowland rainforest and grassland
- Deciduous bushland and thicket
- Sahelmontane vegetation



Source: FAO

Sudan Lesson #1: Demographic and Map Skills



Sudan Regional Boundary Map



Sudan Topographical Map

Low
Plains
Mountains

Sudan Lesson #1: Demographic and Map Skills

Sudan Demographic/Map Skills Sheet

Name _____

Fill in the chart with information found on the maps.

<u>Regions</u>	Cities	<u>Water</u> (Lakes, Rivers & Seas)	<u>Elevation</u>	<u>Vegetation</u> <u>Cover</u>
<u>Eastern</u>				
Northern				
Darfur				
Khartoum				
Kordofan				
Central				
Upper Nile				
Bahr El Ghazal				
Equatoria				

