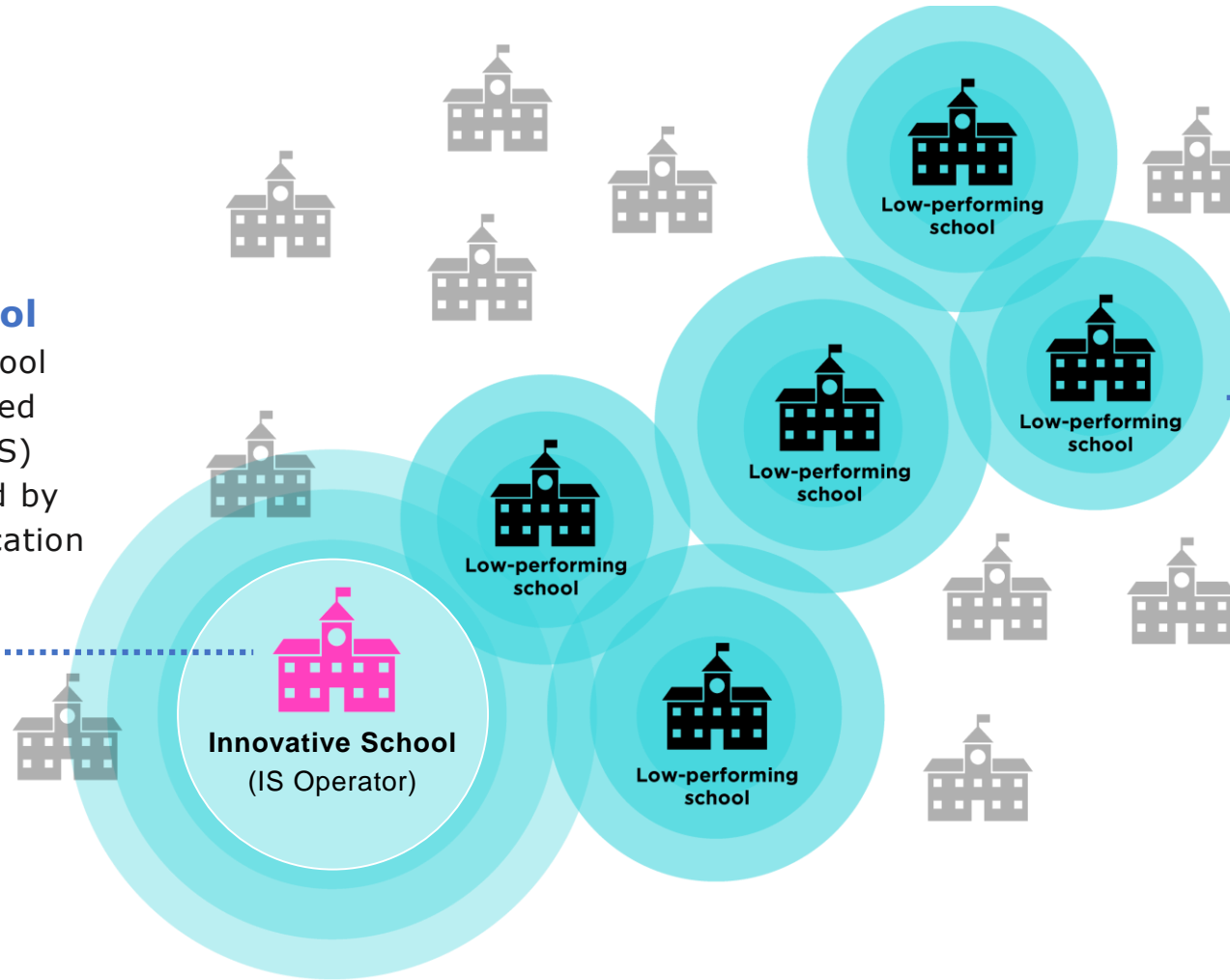


# LOCAL SCHOOL DISTRICT

**Innovative School**  
A low-performing school operated by a qualified Innovative School (IS) operator as authorized by the State Board of Education



**Innovation Zone (I-Zone)**  
A group of low-performing schools in a local district (where an Innovative School is established) that can be granted additional flexibility to engage non-traditional strategies designed to promote student achievement

