
Teacher Vacancy Report

Fall 2005

Prepared by

**Department of Public Instruction
Division of Human Resource Management
Fall 2005**

Teacher Vacancy Report Fall 2005

Annually since October 1999, LEAs have been asked to report on the number of vacant positions they have on October 20th (or the last working day prior to this date). The data submitted by the LEAs in October 2005 are reported in the following pages. The data have been summarized across years and across regions.

Pages 2 - 4 reflect the number of vacancies by LEA.

Pages 5 - 13 depict vacancies by regions. (Please note: The scales used on these graphs are not the same from region to region.)

Page 14 provides summary data on vacancies by license area.

Pages 15 – 20 depict vacancies by license area.

Across the state, 971 vacancies were reported. This represents a 4% (n = 36) increase from the number reported in October 2004. Forty (40) LEAs reported fewer vacancies in 2005 than in 2004; 19 reported the same number; 56 reported more vacancies in 2005 than 2004. In looking at the license areas in which vacancies were reported, there were more vacancies at the preschool/elementary level and in the instructional/student support service areas. The increase in this latter category was caused by a 90% increase in the number of vacant speech-language pathology positions (from 30 vacancies in this area in 2004 to 57 vacancies in this area in 2005).

It is worth noting that while there were 36 more vacancies in October 2005 than in October 2004, LEAs were provided an additional 1,058 teaching positions in the initial 2005-06 allotments than they were provided in the 2004-05 allotments.

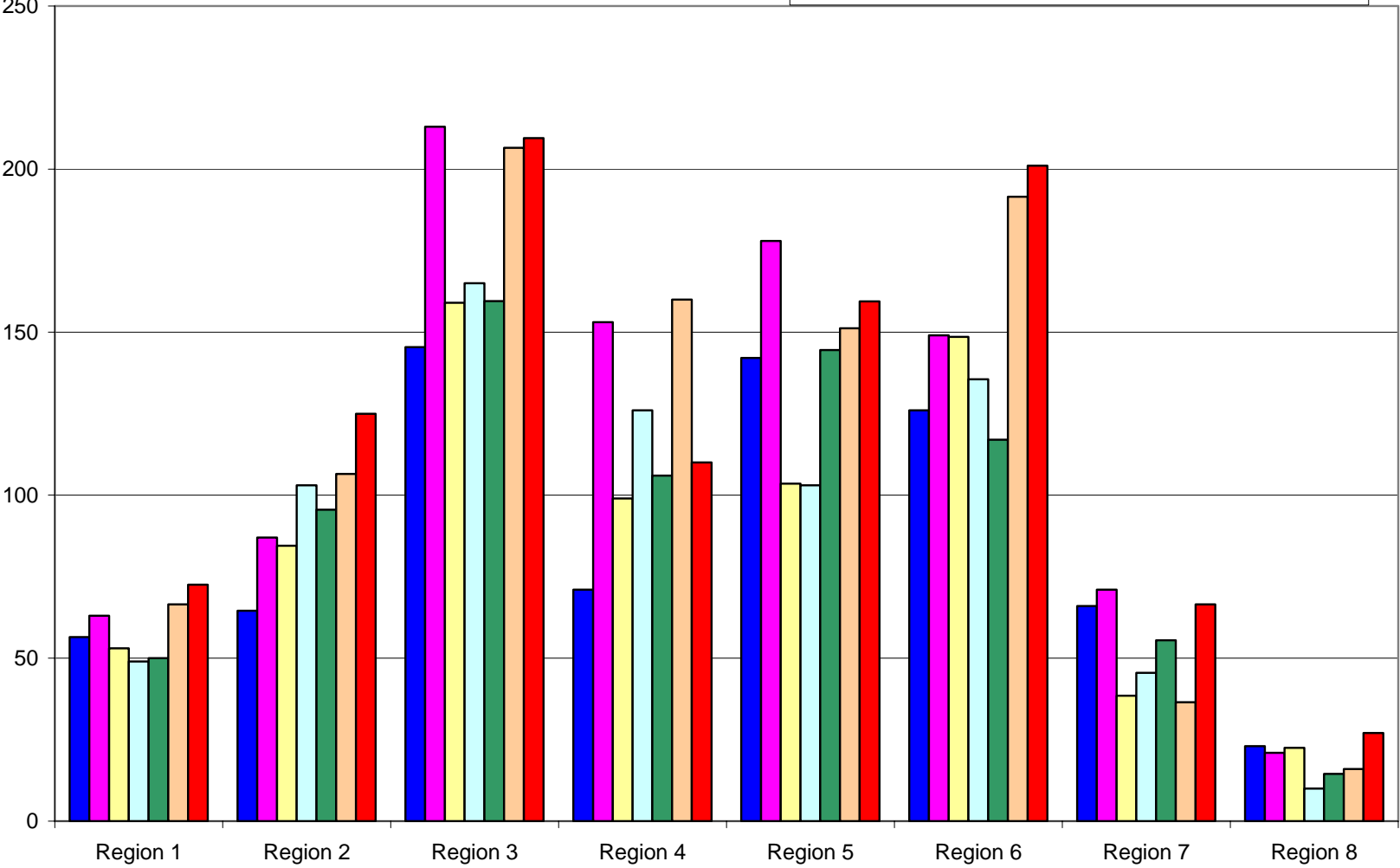
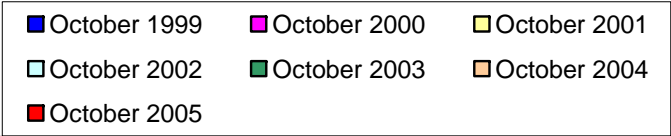
Vacancies by LEA

System	October 1999	October 2000	October 2001	October 2002	October 2003	October 2004	October 2005
Alamance-Burlington	30	29	8	17	17.3	7	14
Alexander	NR	0	0	0	3	2	3
Alleghany	0	0	0	0	2	1	2
Anson	5	3	3	5	3	1	6
Ashe	3	1	0	0	1	0	0
Avery	1	5	2	0	1	1	1
Beaufort	4	8	3.5	3	1	0	6
Bertie	8	8	12	11	9	5	14
Bladen	NR	2	0	3	1.5	6	10
Brunswick	4.5	5	2	4	2	7	4
Buncombe	NR	1	0.5	2	3.5	2	2.5
Asheville City	9	3	0	1	0	0	4
Burke	11	9	2	8	7	7	9
Cabarrus	21	12	3	3	7	4	12
Kannapolis City	17.5	3	6	5	4	1	8
Caldwell	12	2	0	1.5	3	1	1
Camden	1.5	0	2	0	2	0	2
Carteret	2	2	0	0	5	0	4
Caswell	1	3	1	4	4	3	0
Catawba	NR	9	9	2	10	1	1
Hickory City	2	2	0	1	1	0	0
Newton-Conover	6	3	2	1	2	1	0
Chatham	5	5	9	4	3	10	6
Cherokee	NR	5	0	0	0	0	0
Chowan	1	1	1	1	0	2	4
Clay	0	0	0	0	0	0	0
Cleveland	4	3	4	2	0	6	4
Kings Mtn. Dist.	1	0	0	0	1	Merged	Merged
Shelby City	1	2	1	0	0	Merged	Merged
Columbus	1	1	0	2	1	1	9
Whiteville City	3	2	1	0	0	0	0
Craven	2	1	6	12	10	5	18
Cumberland	NR	50	44	29	28.5	51	30
Currituck	1	1	2	1	0	3	5
Dare	NR	2	2	2	2	2	1
Davidson	10	7	4	2	3	12.5	12
Lexington City	1	3	3	1	1	1	2
Thomasville City	1	1	2	0	1	0	2
Davie	3	1	0	0	1	1	0
Duplin	4	7	9	8	7	18	0
Durham Public	36.4	29	22	21	31	26	62
Edgecombe	2	17	9	10	8	29	21
Forsyth	7	27	13.5	12	18.1	22.7	29.4
Franklin	12	11	14	9	10	13	11
Gaston	4	2	8	2	9	9	15

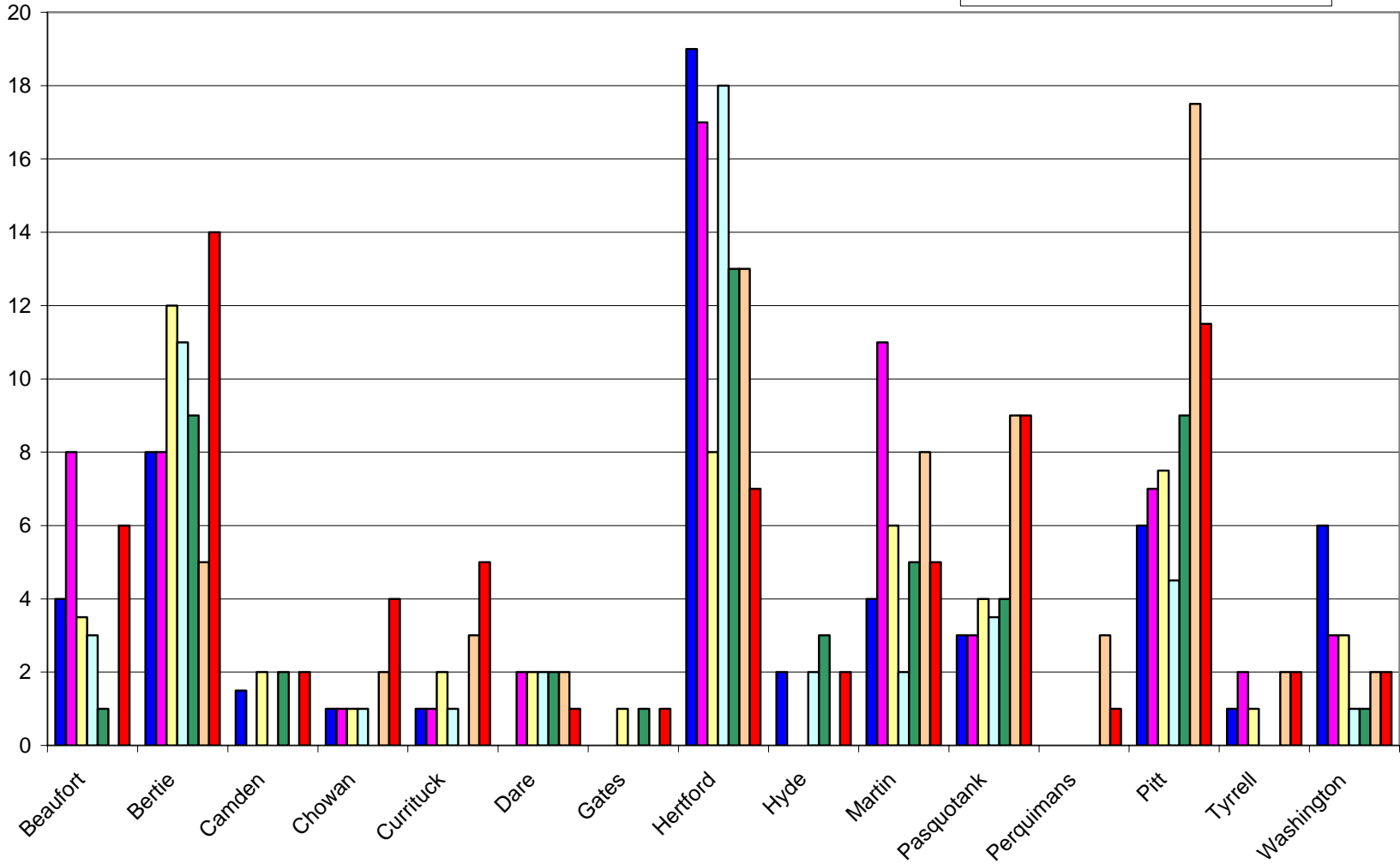
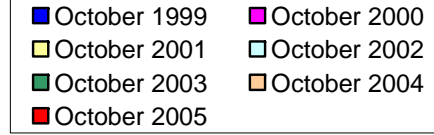
System	October 1999	October 2000	October 2001	October 2002	October 2003	October 2004	October 2005
Gates	NR	0	1	0	1	0	1
Graham	0	0	0	0	0	0	1
Granville	6	6	9	5	10.5	7	9
Greene	3	2	2	1	3	0	1
Guilford	51.1	66	34.5	33.5	63.6	52	47
Halifax	7	6	13.5	8	7	4	8
Roanoke Rapids City	3	1	1	3	2	4	3
Weldon City	4	1	8	1	2	1	3
Harnett	15	13	17	23	19	24	17
Haywood	0	0	0	0	1	2	1
Henderson	3	0	4	1	0	1	0
Hertford	19	17	8	18	13	13	7
Hoke	12	20	4	22	21	14	9
Hyde	2	0	0	2	3	0	2
Iredell	7	2	3	7	3	2	13
Mooreville City	4	0	1	0	1.5	1.5	1
Jackson	0	1	3	0	4	4	1.5
Johnston	12.5	6	10	10	15	17	17.5
Jones	1	1	0	1	0	1	0
Lee	4	7	6	7	3	5	6
Lenoir	5	16	6	27	14	12	22
Lincoln	2	2	6	1	4	2	2
Macon	1	1	5	1	0	0	0
Madison	4	2	2	3	0	0	2
Martin	4	11	6	2	5	8	5
McDowell	2	1	2	0	0	3	7
Char.-Mecklenburg	54.5	104	97.5	111.5	81	156.5	131
Mitchell	3	0	0	0	0	0	0
Montgomery	4	4	2	9	3	4	2
Moore	0	6	1	0	6	6	6
Nash	29	24	16	6	10	9	14
New Hanover	12	9	12	8.5	11.5	10	13
Northampton	NR	11	7	16	9	12	7
Onslow	7	4	0.5	5	14	18	30
Orange	3	3	6	0	4	3	6
Chapel Hill-Carrboro	5.5	7	5	3	9	10	10.5
Pamlico	3	1	0	0	1	2	2
Pasquotank	3	3	4	3.5	4	9	9
Pender	7	10	4	5.5	8	8	10
Perquimans	0	0	0	0	0	3	1
Person	5	2	8	2	5	4	0
Pitt	6	7	7.5	4.5	9	17.5	11.5
Polk	0	2	1	0	1	1	0
Randolph	1.5	4	4	6	3	5.5	10.5
Asheboro City	5	4	1	1	4	3.5	1
Richmond	3	5	3	0	1	0	8

System	October 1999	October 2000	October 2001	October 2002	October 2003	October 2004	October 2005
Robeson	25	37	20	31	21	47	11
Rockingham	0	9	0.5	4.5	3.5	17	12
Rowan	2	18	6	14	6	10	15.5
Rutherford	0	2	2	0	1	0	0
Sampson	4	2	2	8	3	5	4
Clinton City	4	2	1	3	1	0	1
Scotland	4	6	1	0	1	2	2
Stanly-Albemarle	1	10	3	0	1	1	4
Stokes	16	8	4	13	5	0	7
Surry	4	4	3	1	3	0	5
Elkin City	0	2	0	0	0	0	1
Mt. Airy City	0	0	1	0	0	0	1
Swain	0	2	0	0	1	2	0
Transylvania	1	1	1	2	2	1	1
Tyrrell	1	2	1	0	0	2	2
Union	15	8	17	6	7	11	19
Vance	10	5	11	17	12	16	10
Wake	7.5	68	19.5	37	30	42.5	21
Warren	4	18	7	11	4	16	7
Washington	6	3	3	1	1	2	2
Watauga	5	3	2	3	3	4	1
Wayne	6	25	40	20	16	20.5	16
Wilkes	2	6	3.5	6	8	3	9
Wilson	12	10	12	11	9	10	16
Yadkin	4	4	4	1	0	1	3
Yancey	0	0	2	0	1	0	7
Total	694.5	935	708.5	737	742.5	934.7	970.9

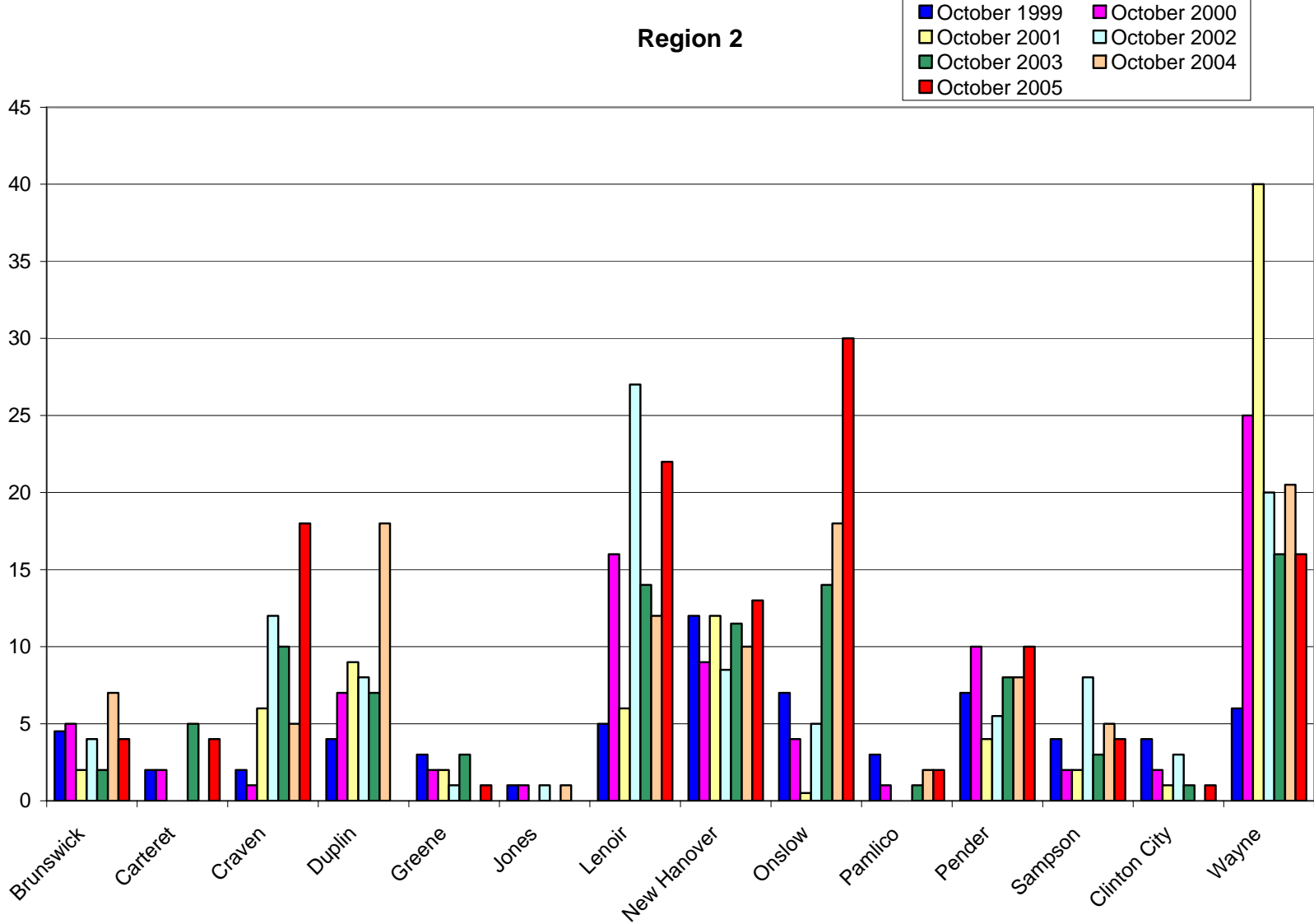
Vacancies By Regions



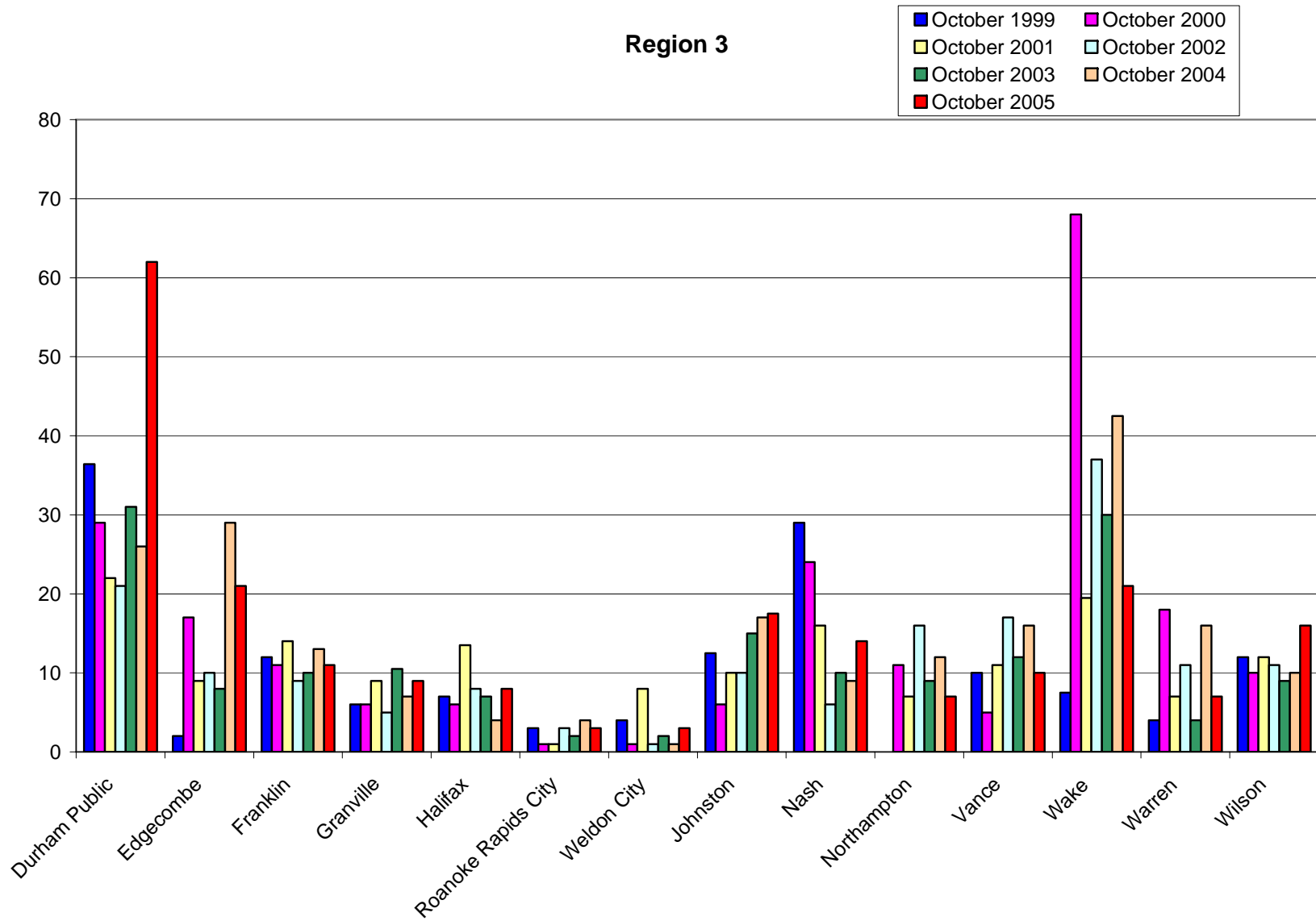
Region 1



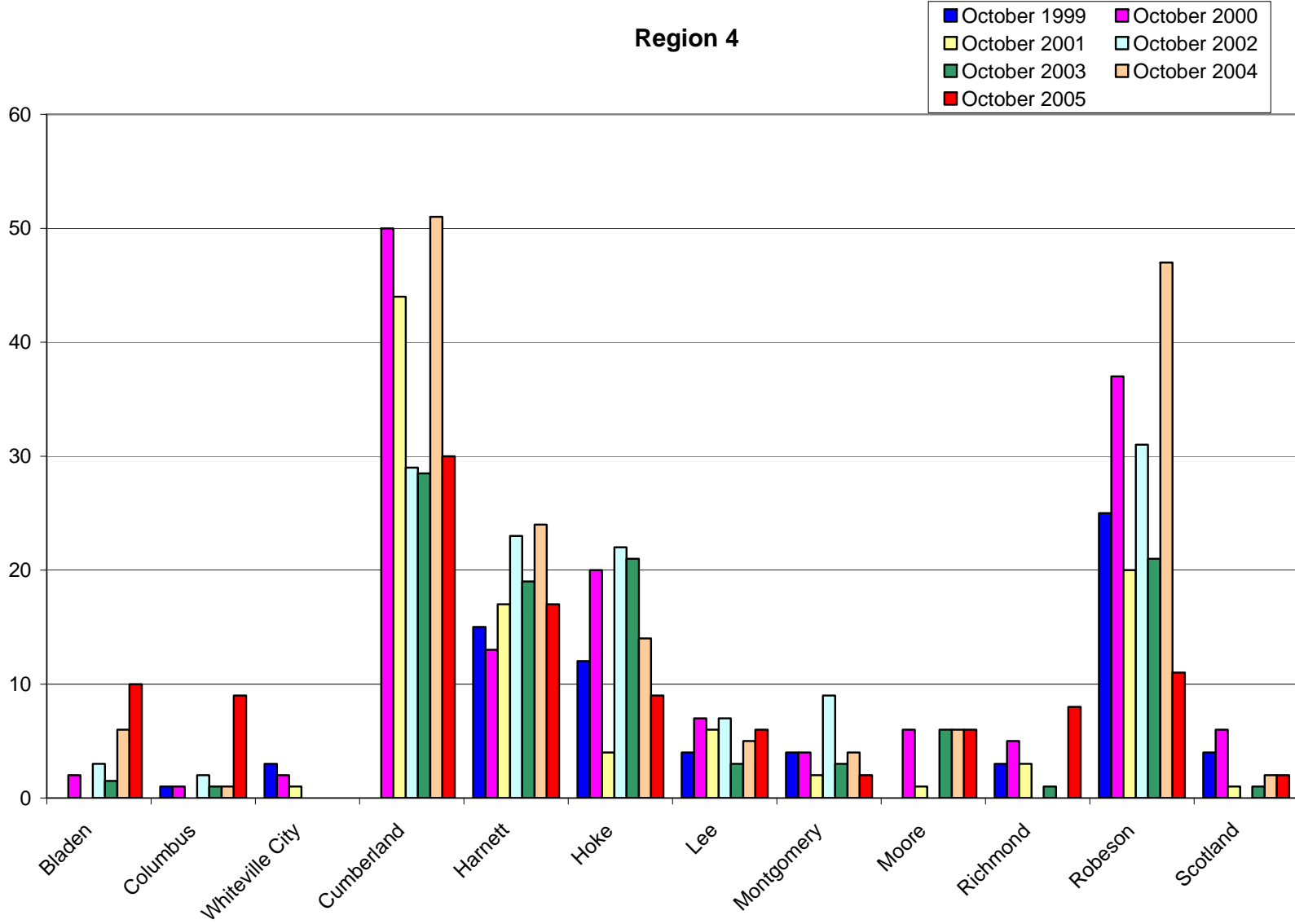
Region 2



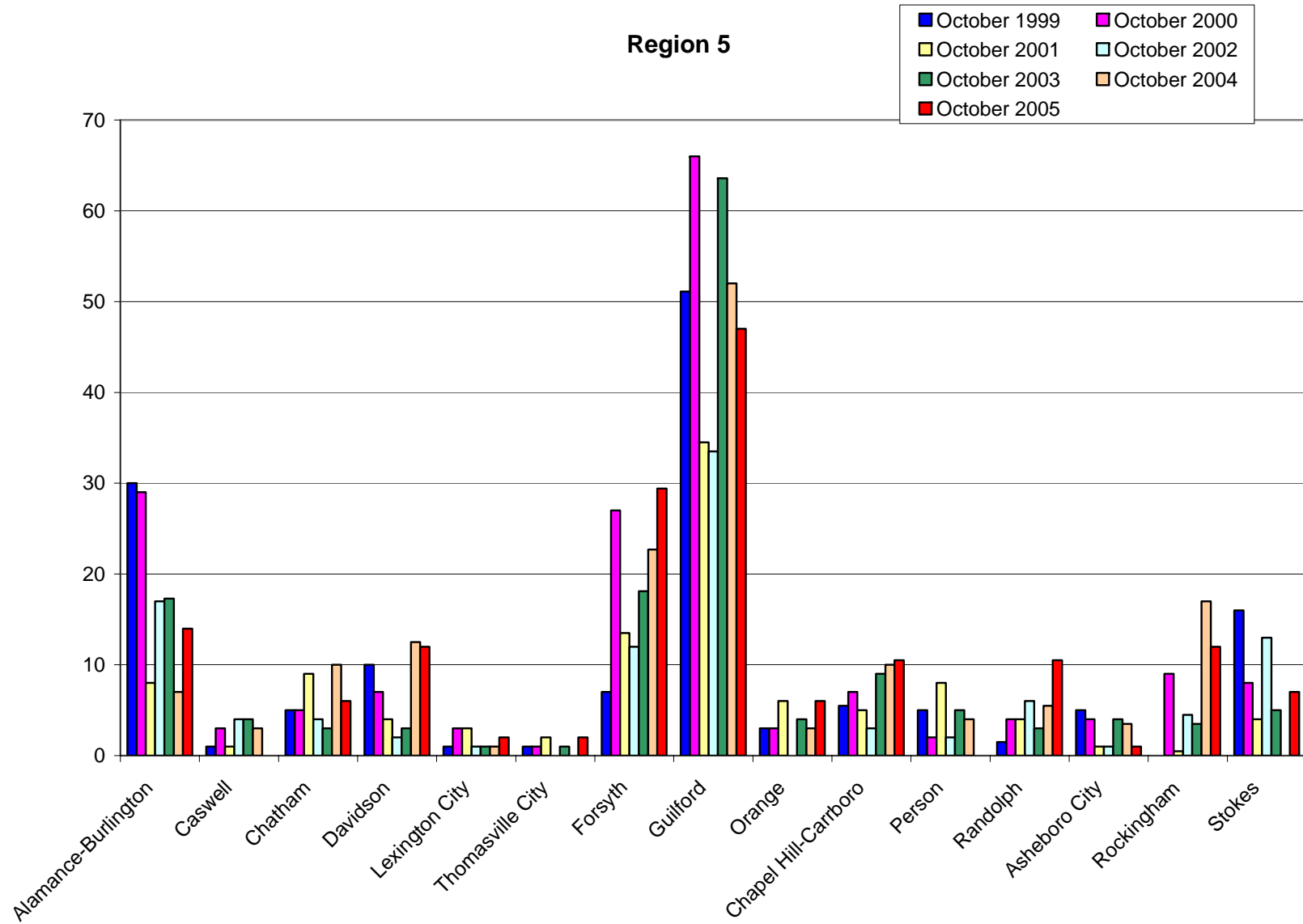
Region 3



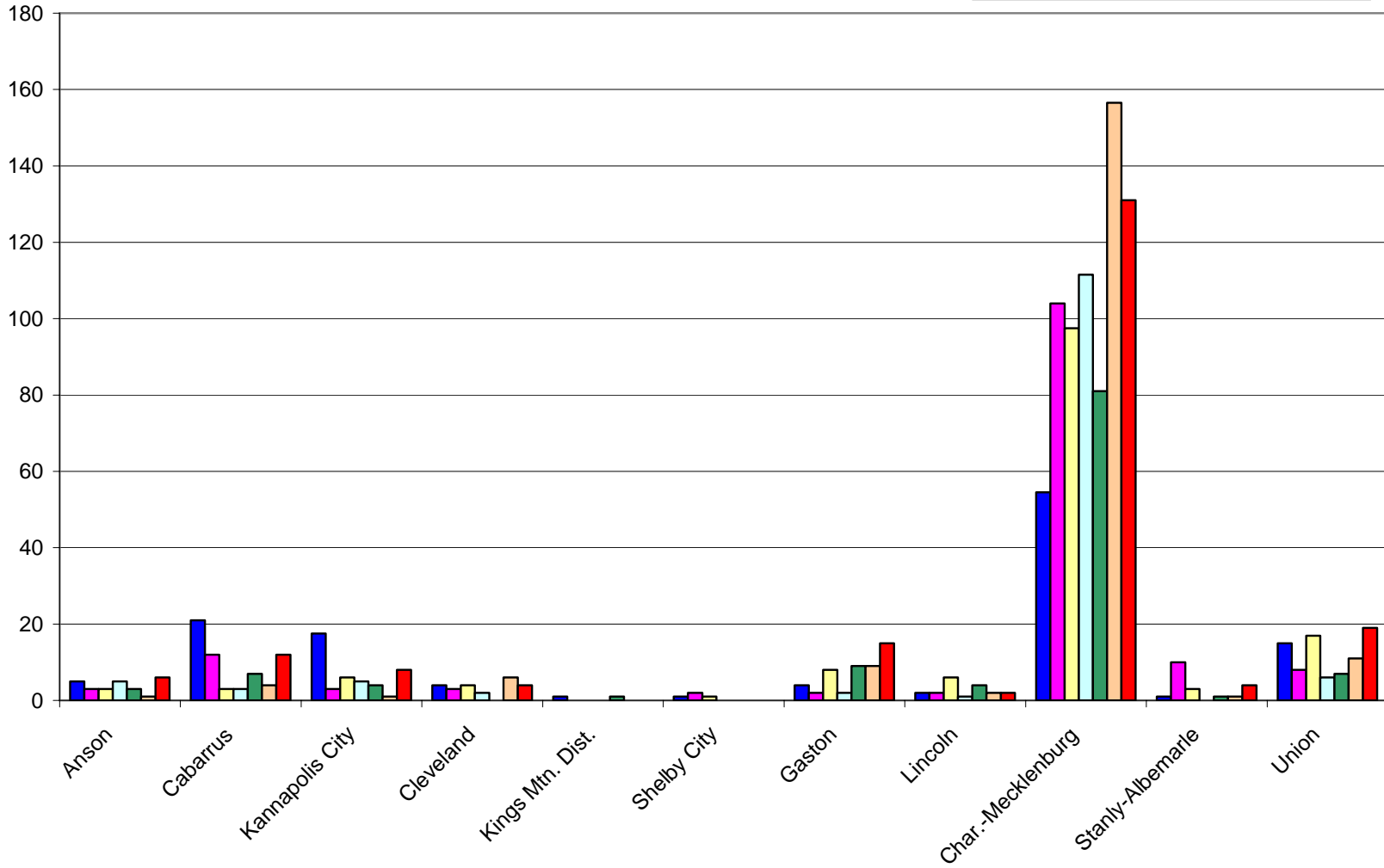
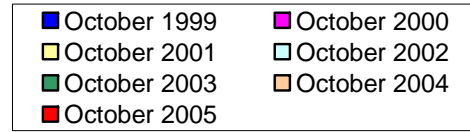
Region 4



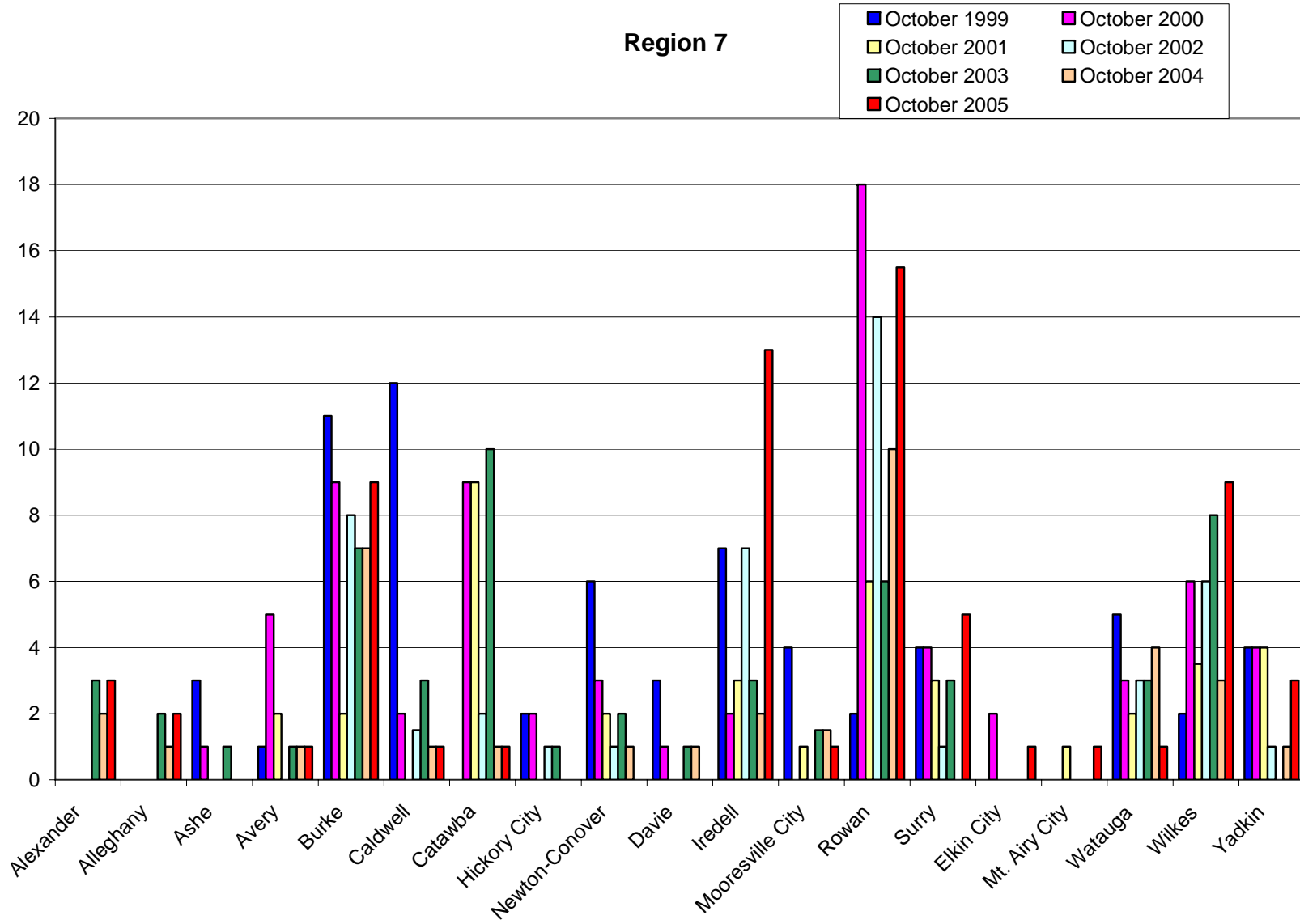
Region 5



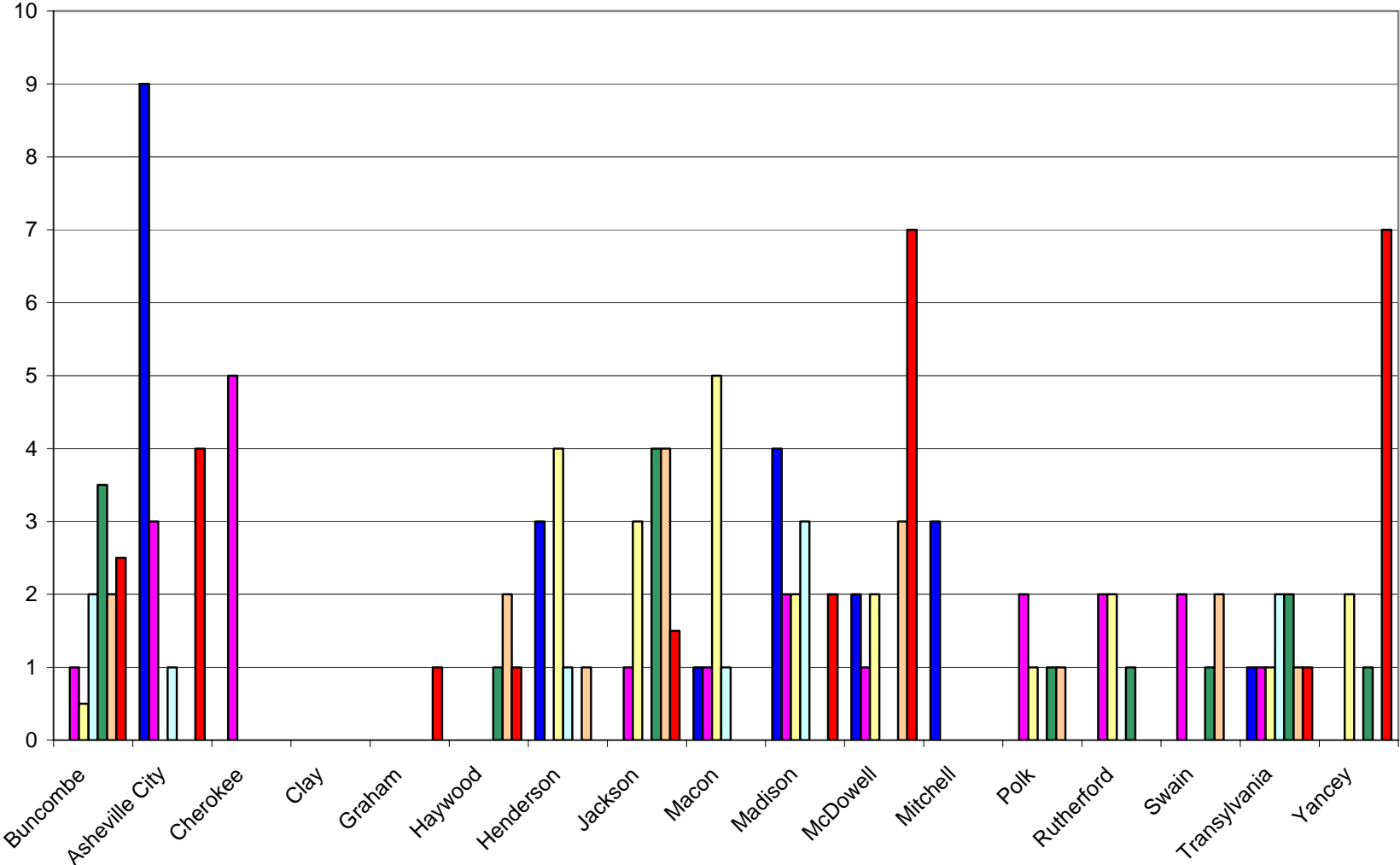
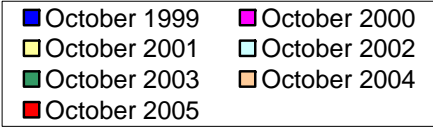
Region 6



Region 7



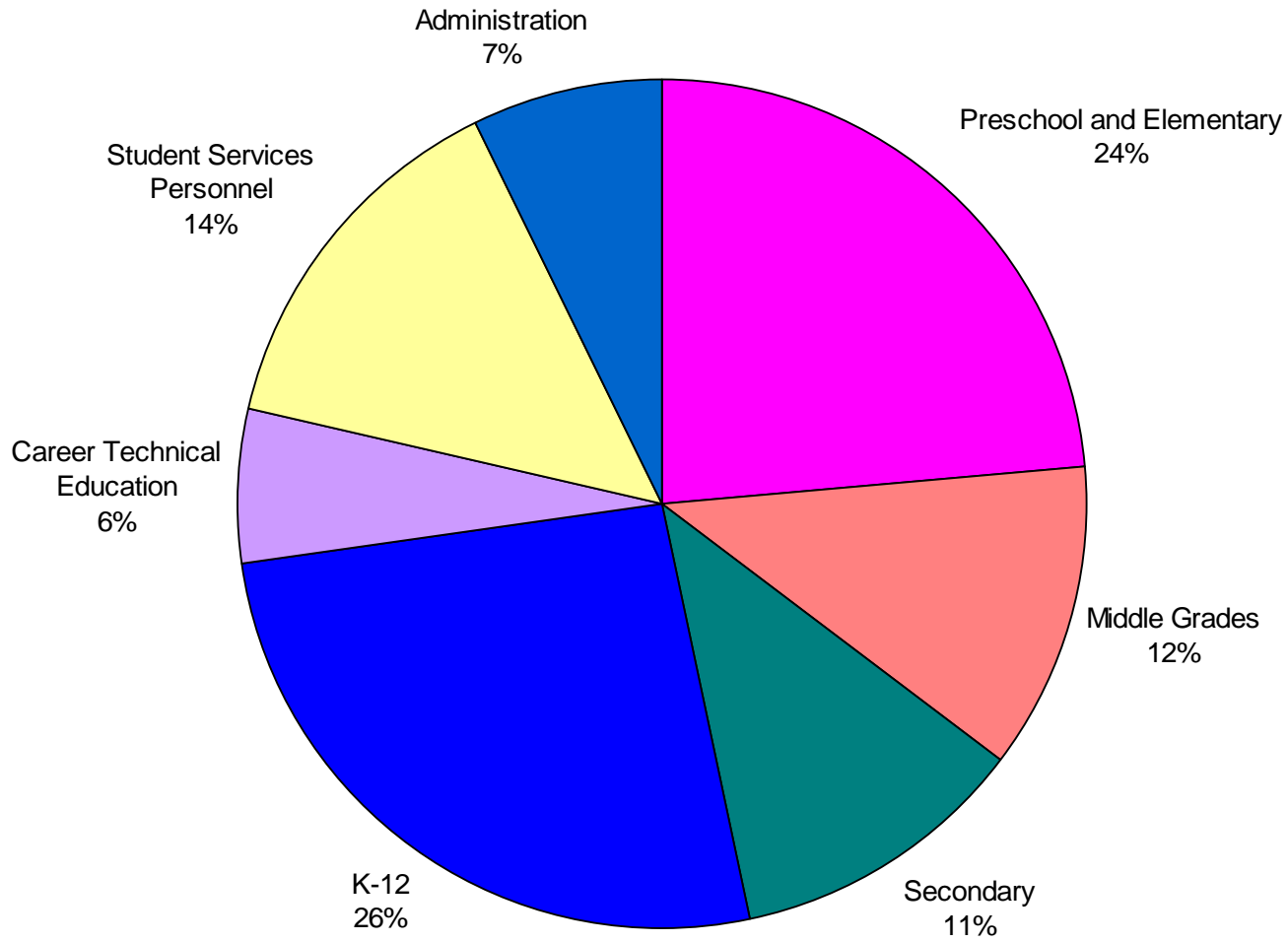
Region 8

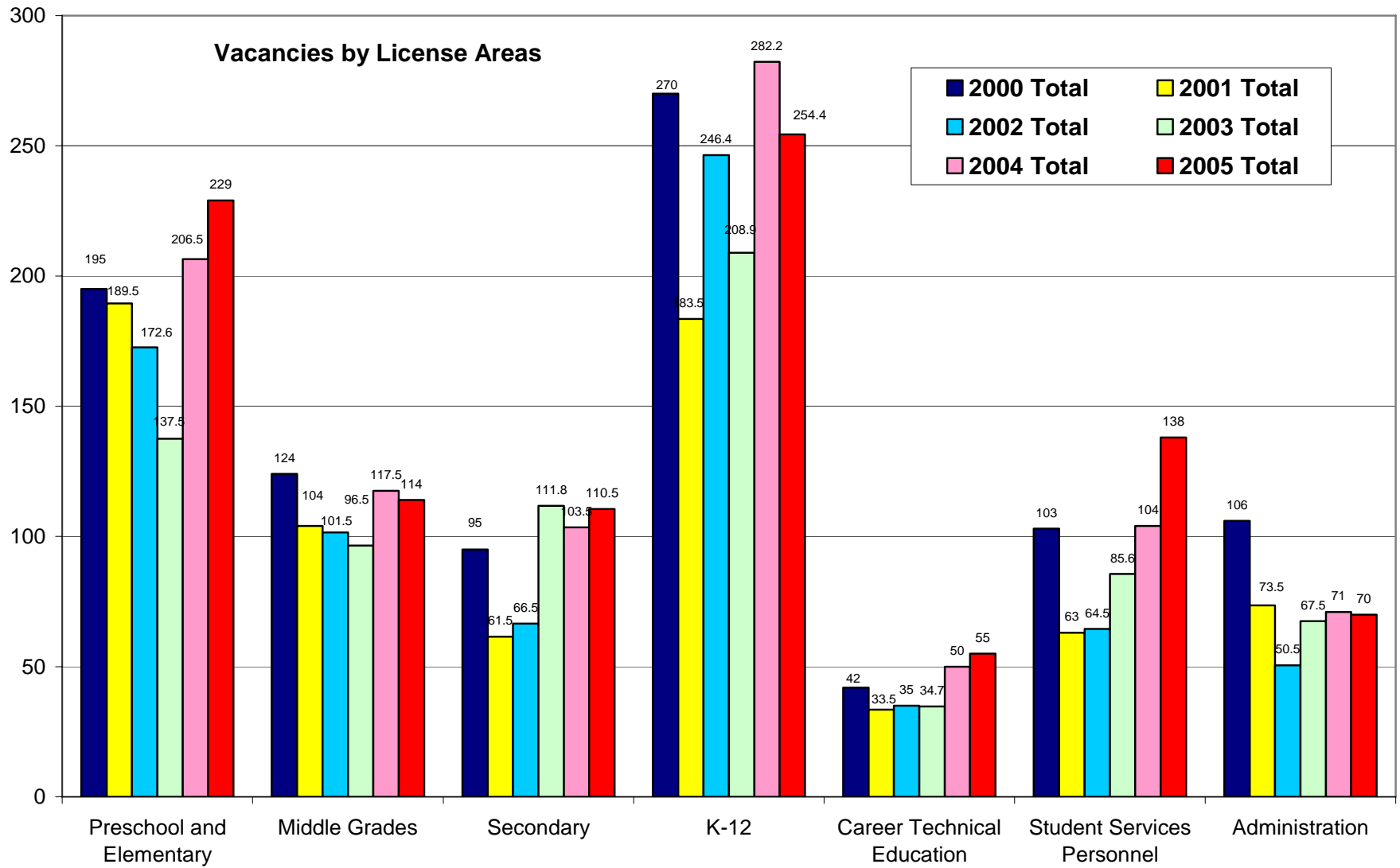


Vacancies Reported by Licensure Area

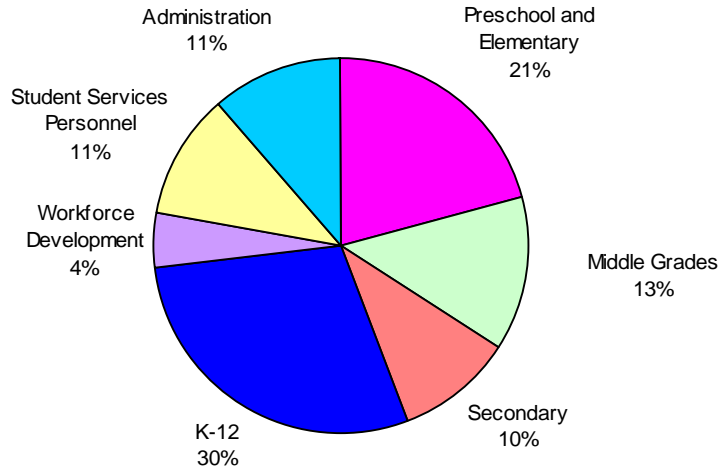
LICENSURE AREA	October 2000	October 2001	October 2002	October 2003	October 2004	October 2005
Preschool & Elementary	195	189.5	172.6	137.5	206.5	229
B-K	18	15	32	12	18	25
K-6	177	174.5	140.6	125.5	188.5	204
Middle Grades	124	104	101.5	96.5	117.5	114
Language Arts 6-9	36	27.5	24	28.5	33.5	27
Social Studies 6-9	10	13.5	10	9	20.5	11.5
Math 6-9	39	29.5	36	32.5	32.5	36.5
Science 6-9	31	19.5	19	20.5	21.5	23.5
Other 6-9	8	14	12.5	6	9.5	15.5
Secondary	95	61.5	66.5	111.8	103.5	110.5
English 9-12	15	14	13.5	15	18.5	16
Social Studies 9-12	8	5	7	7.5	7	10
Math 9-12	29	25	25	44.5	45	48
Science 9-12	18	9.5	9	21	17.5	25
Other 9-12	25	8	12	23.8	15.5	11.5
K-12	270	183.5	246.4	208.9	282.2	254.4
Exceptional Children K-12	156	108	169	126.2	163	171
Art K-12	12	18	10.5	11	18	3.5
Music K-12	27	13	18.9	18.5	19	14
Physical Education K-12	28	17.5	21.5	16.1	21	18
Health K-12	2	0	3.5	0.5	2	0
Foreign Language K-12	20	12	11.5	19.6	33.7	18.4
English as a Second Language	25	15	11.5	17	25.5	29.5
Career Technical Education	42	33.5	35	34.7	50	55
Agriculture	1	0	0	3	1	2
Family & Consumer Sciences	9	7.5	5	8.5	14	15.5
Marketing	1	1	4	0	2	2
Business	6	9	7.5	6	6	5
Technology	12	12	4	8	6	10.5
Trade & Industrial Education	4	1	1	3	6	5
Other (Career Technical Ed.)	9	3	13.5	6.2	15	15
Student Services Personnel	103	63	64.5	85.6	104	138
Media	9	19	16	14	22	27
School Counselor	37	13.5	24	33.5	29	29
Psychologist	17	14.5	12.5	11.6	13	17.5
Social Worker	11	2	3	8.5	5.5	4.5
Audiologist	3	1	0	0	2.5	0
Speech-Language Pathologist	19	13	9	18	30	57
Other	7	0	0	0	2	3
Administration	106	73.5	50.5	67.5	71	70
Assistant Principal	27	18	14	13	21	19
Principal	12	11	4	11	3	8
Central Office Other	67	44.5	32.5	43.5	47	43
Total	935	708.50	737	742.5	934.7	970.9

Vacancies by Licensure Area October 2005

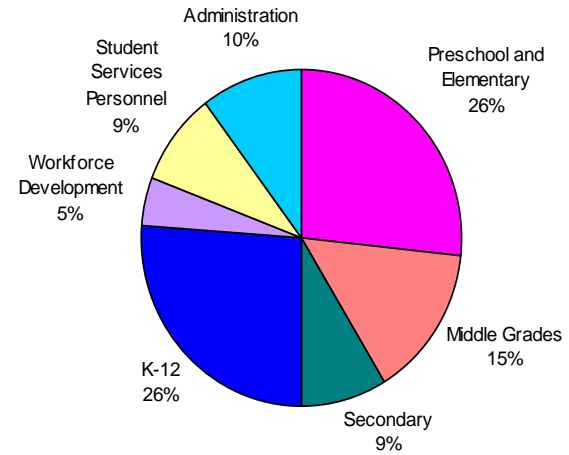




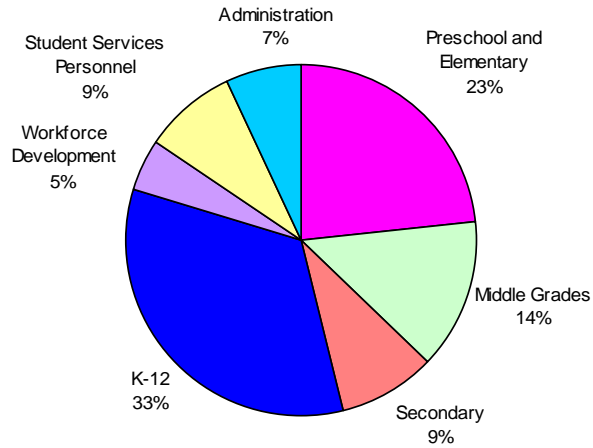
Vacancies by Licensure Areas October 2000



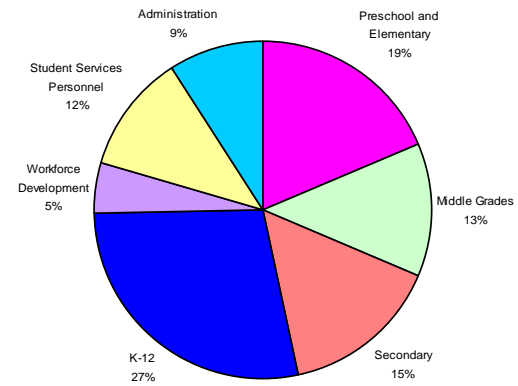
Vacancies by Licensure Areas October 2001



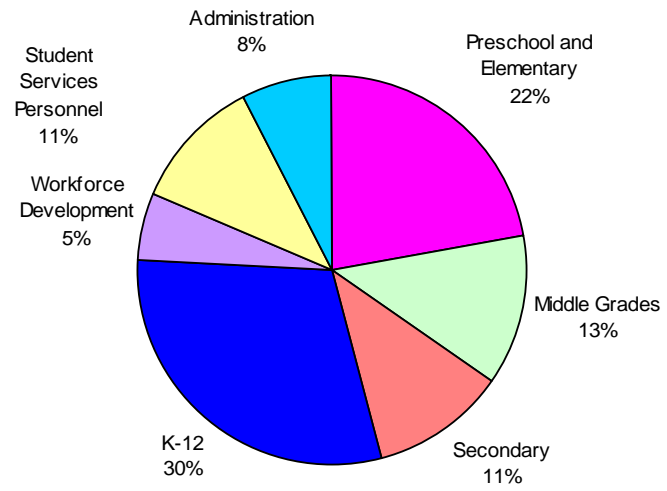
Vacancies by Licensure Areas October 2002



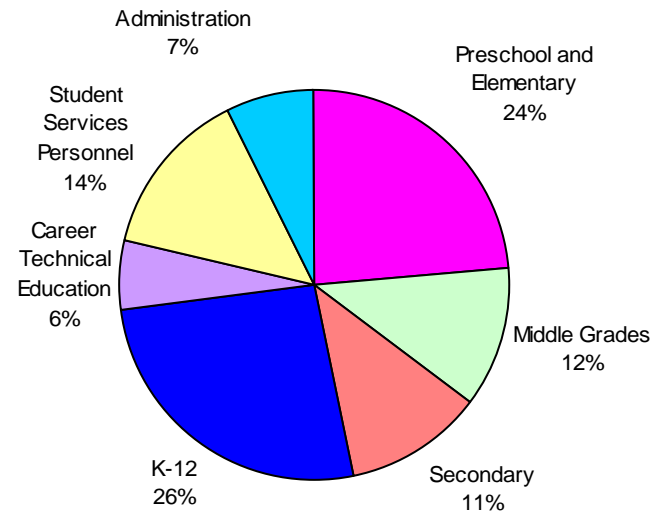
Vacancies by Licensure Areas October 2003



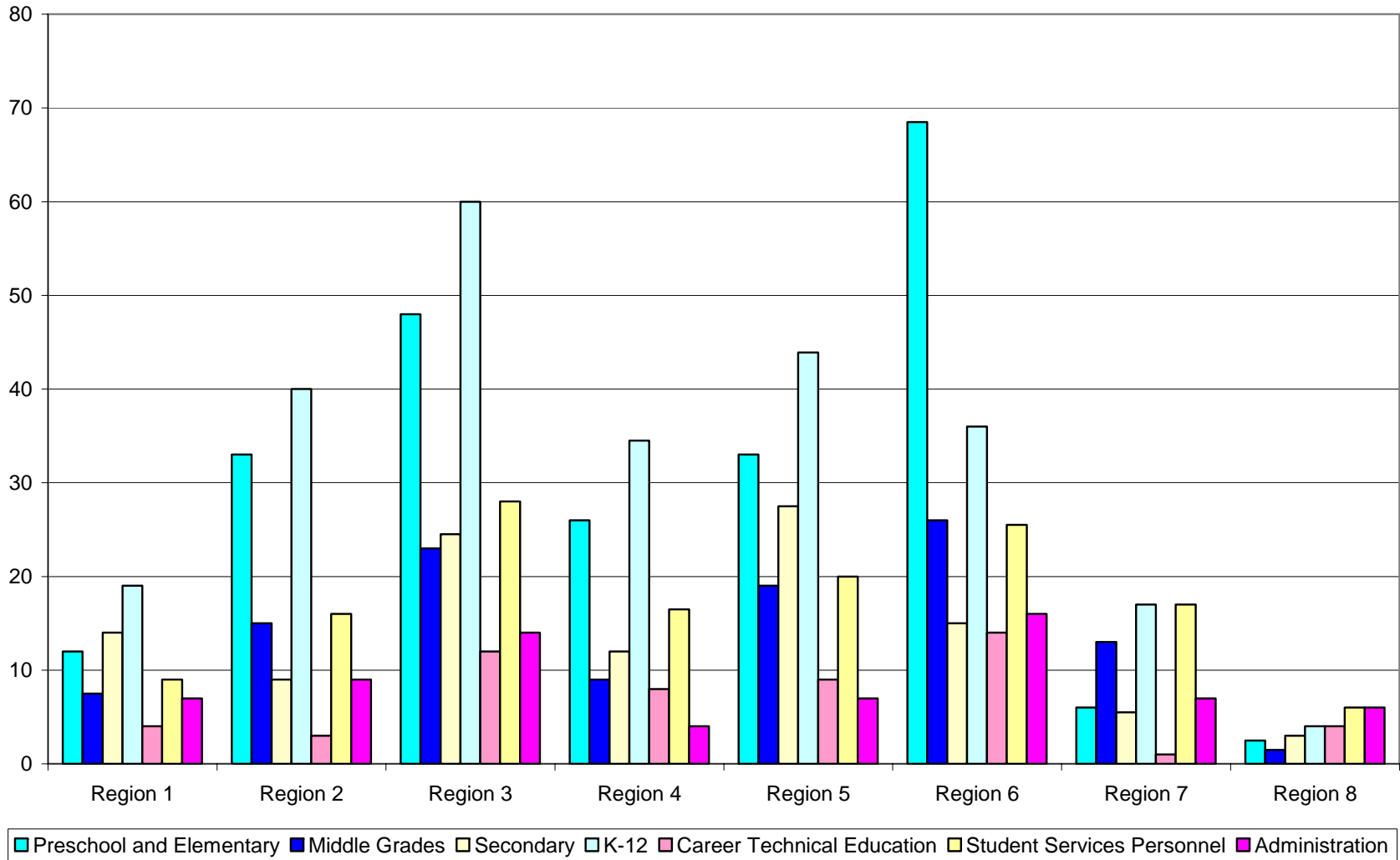
Vacancies by Licensure Areas October 2004



Vacancies by Licensure Area October 2005



Vacancy Areas by Region



Relative Percent of Vacancy Areas by Region

