

---

**Teacher Vacancy Report**

**Fall 2007**

---

**Prepared by**

**Department of Public Instruction  
Center for Recruitment and Retention  
Fall 2007**

## Teacher Vacancy Report Fall 2007

---

Annually since October 1999, LEAs have been asked to report on the number of vacant positions they have on October 20<sup>th</sup> (or the last working day prior to this date). The data submitted by the LEAs in October 2007 are reported in the following pages. The data have been summarized across years and across regions.

Pages 2 - 4 reflect the number of vacancies by LEA.

Pages 5 - 13 depict vacancies by regions. (Please note: The scales used on these graphs are not the same from region to region.)

Page 14 provides summary data on vacancies by license area.

Pages 15 – 19 depict vacancies by license area.

Across the state, 1096.3 vacancies were reported. This represents an 11% (n = 140.1) decrease from the number reported in October 2006. Fifty-five (55) LEAs reported fewer vacancies in 2007 than in 2006; 20 reported the same number; 40 reported more vacancies in 2007 than 2006.

In looking at the license areas in which vacancies were reported, there was a 13% decrease in the number of preschool and elementary teacher vacancies; a 17% decrease in the number of middle school teacher vacancies; a 15% decrease in the number of exceptional children's teacher vacancies; a 17% decrease in the number of career-technical education teacher vacancies; and a 15% decrease in the number of student services personnel vacancies. The number of administrative vacancies increased 11%. The number of reported vacancies for high school teachers remained relatively stable.

It is worth noting LEAs were provided an additional 1,155 teaching positions in the initial 2007-08 allotments than they were provided in the 2006-07 allotments.

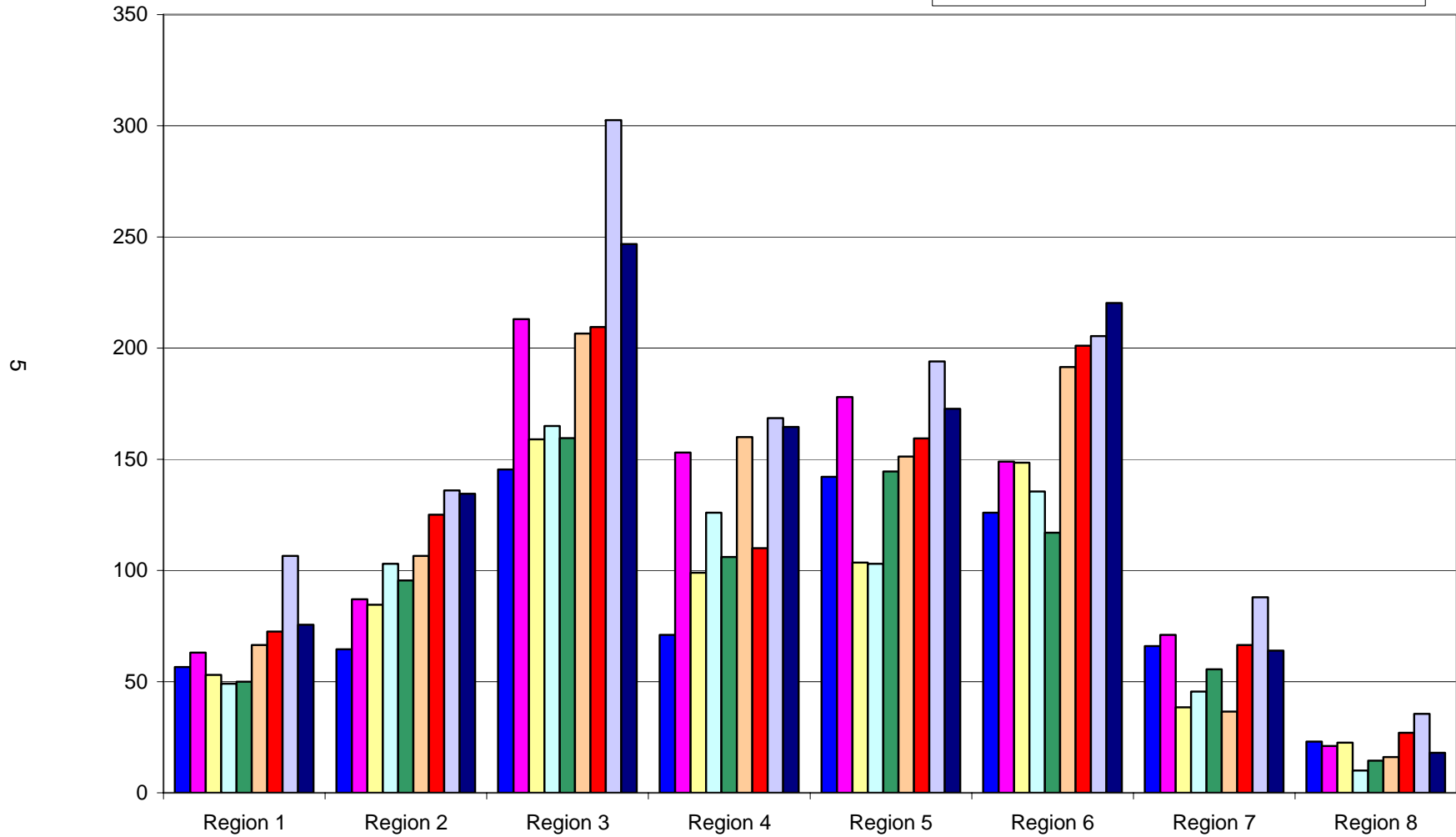
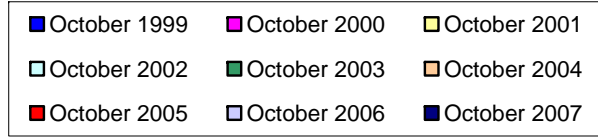
## Vacancies by LEA

System	October 1999	October 2000	October 2001	October 2002	October 2003	October 2004	October 2005	October 2006	October 2007
Alamance-Burlington	30	29	8	17	17.3	7	14	31	26
Alexander	NR	0	0	0	3	2	3	4	0
Alleghany	0	0	0	0	2	1	2	3	2
Anson	5	3	3	5	3	1	6	18	5
Ashe	3	1	0	0	1	0	0	1	1
Avery	1	5	2	0	1	1	1	2	0
Beaufort	4	8	3.5	3	1	0	6	9	5
Bertie	8	8	12	11	9	5	14	21	14
Bladen	NR	2	0	3	1.5	6	10	17	9.5
Brunswick	4.5	5	2	4	2	7	4	10	12
Buncombe	NR	1	0.5	2	3.5	2	2.5	1.5	3
Asheville City	9	3	0	1	0	0	4	1	1
Burke	11	9	2	8	7	7	9	15.5	4
Cabarrus	21	12	3	3	7	4	12	12	1
Kannapolis City	17.5	3	6	5	4	1	8	5	8
Caldwell	12	2	0	1.5	3	1	1	2.5	1
Camden	1.5	0	2	0	2	0	2	2	1
Carteret	2	2	0	0	5	0	4	2	1
Caswell	1	3	1	4	4	3	0	2	2
Catawba	NR	9	9	2	10	1	1	3.5	2
Hickory City	2	2	0	1	1	0	0	4	0
Newton-Conover	6	3	2	1	2	1	0	1	1
Chatham	5	5	9	4	3	10	6	8	14
Cherokee	NR	5	0	0	0	0	0	4.5	0
Chowan	1	1	1	1	0	2	4	1	1
Clay	0	0	0	0	0	0	0	0	0
Cleveland	4	3	4	2	0	6	4	2	3
Kings Mtn. Dist.	1	0	0	0	1	Merged	Merged	Merged	Merged
Shelby City	1	2	1	0	0	Merged	Merged	Merged	Merged
Columbus	1	1	0	2	1	1	9	2	3
Whiteville City	3	2	1	0	0	0	0	1	1
Craven	2	1	6	12	10	5	18	18	4
Cumberland	NR	50	44	29	28.5	51	30	41.5	49.5
Currituck	1	1	2	1	0	3	5	6	1
Dare	NR	2	2	2	2	2	1	1	1
Davidson	10	7	4	2	3	12.5	12	8	15
Lexington City	1	3	3	1	1	1	2	10	1
Thomasville City	1	1	2	0	1	0	2	4	2
Davie	3	1	0	0	1	1	0	1	1
Duplin	4	7	9	8	7	18	0	4	13.5
Durham Public	36.4	29	22	21	31	26	62	54.5	38
Edgecombe	2	17	9	10	8	29	21	26	17.4
Forsyth	7	27	13.5	12	18.1	22.7	29.4	43	53
Franklin	12	11	14	9	10	13	11	20	11
Gaston	4	2	8	2	9	9	15	11	6

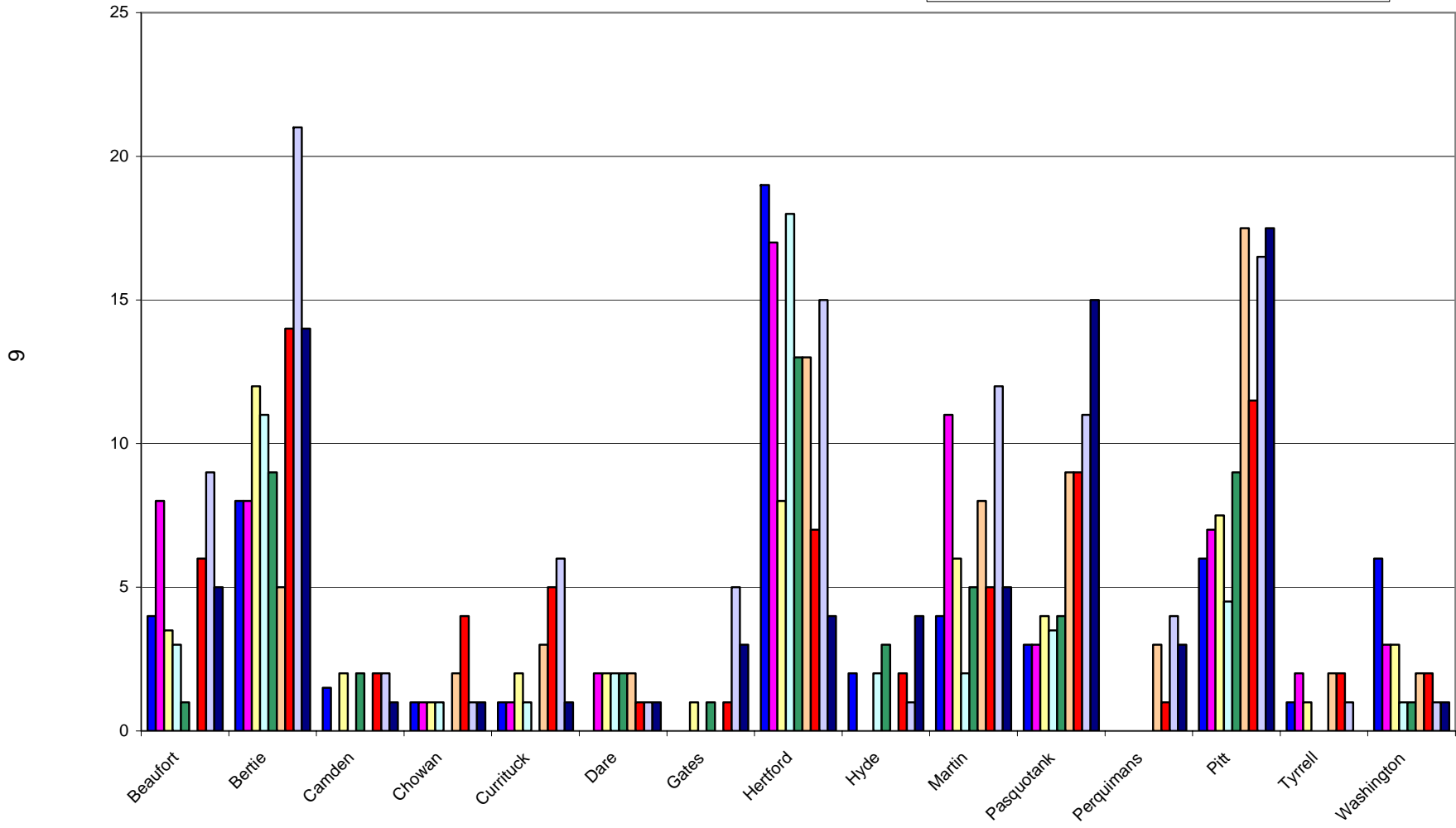
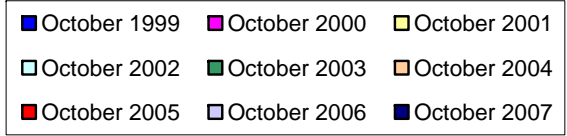
System	October 1999	October 2000	October 2001	October 2002	October 2003	October 2004	October 2005	October 2006	October 2007
Gates	NR	0	1	0	1	0	1	5	3
Graham	0	0	0	0	0	0	1	0	0
Granville	6	6	9	5	10.5	7	9	2	9
Greene	3	2	2	1	3	0	1	3	7.5
Guilford	51.1	66	34.5	33.5	63.6	52	47	40.5	19
Halifax	7	6	13.5	8	7	4	8	22	12
Roanoke Rapids City	3	1	1	3	2	4	3	2	4
Weldon City	4	1	8	1	2	1	3	4	7
Harnett	15	13	17	23	19	24	17	22	20
Haywood	0	0	0	0	1	2	1	0	0
Henderson	3	0	4	1	0	1	0	1	0
Hertford	19	17	8	18	13	13	7	15	4
Hoke	12	20	4	22	21	14	9	18	21
Hyde	2	0	0	2	3	0	2	1	4
Iredell	7	2	3	7	3	2	13	17	9
Mooreville City	4	0	1	0	1.5	1.5	1	4.5	8
Jackson	0	1	3	0	4	4	1.5	11	1
Johnston	12.5	6	10	10	15	17	17.5	36	24.4
Jones	1	1	0	1	0	1	0	3	5
Lee	4	7	6	7	3	5	6	7	8.5
Lenoir	5	16	6	27	14	12	22	30	14
Lincoln	2	2	6	1	4	2	2	2	3
Macon	1	1	5	1	0	0	0	1	0
Madison	4	2	2	3	0	0	2	2.5	1
Martin	4	11	6	2	5	8	5	12	5
McDowell	2	1	2	0	0	3	7	3	2
Char.-Mecklenburg	54.5	104	97.5	111.5	81	156.5	131	136.4	171.25
Mitchell	3	0	0	0	0	0	0	0	1
Montgomery	4	4	2	9	3	4	2	4	5
Moore	0	6	1	0	6	6	6	6	11
Nash	29	24	16	6	10	9	14	22	12
New Hanover	12	9	12	8.5	11.5	10	13	18	19
Northampton	NR	11	7	16	9	12	7	8	2
Onslow	7	4	0.5	5	14	18	30	12	12
Orange	3	3	6	0	4	3	6	16	3
Chapel Hill-Carrboro	5.5	7	5	3	9	10	10.5	5	6.7
Pamlico	3	1	0	0	1	2	2	1	1
Pasquotank	3	3	4	3.5	4	9	9	11	15
Pender	7	10	4	5.5	8	8	10	6	10.5
Perquimans	0	0	0	0	0	3	1	4	3
Person	5	2	8	2	5	4	0	2	4
Pitt	6	7	7.5	4.5	9	17.5	11.5	16.5	17.5
Polk	0	2	1	0	1	1	0	1	0
Randolph	1.5	4	4	6	3	5.5	10.5	7.5	10
Asheboro City	5	4	1	1	4	3.5	1	0	0
Richmond	3	5	3	0	1	0	8	11	8

<b>System</b>	<b>October 1999</b>	<b>October 2000</b>	<b>October 2001</b>	<b>October 2002</b>	<b>October 2003</b>	<b>October 2004</b>	<b>October 2005</b>	<b>October 2006</b>	<b>October 2007</b>
Robeson	25	37	20	31	21	47	11	33	25
Rockingham	0	9	0.5	4.5	3.5	17	12	10	9
Rowan	2	18	6	14	6	10	15.5	16	24
Rutherford	0	2	2	0	1	0	0	5	7
Sampson	4	2	2	8	3	5	4	5	8
Clinton City	4	2	1	3	1	0	1	1	1
Scotland	4	6	1	0	1	2	2	6	3
Stanly	1	10	3	0	1	1	4	5	4
Stokes	16	8	4	13	5	0	7	7	8
Surry	4	4	3	1	3	0	5	6	7
Elkin City	0	2	0	0	0	0	1	0	0
Mt. Airy City	0	0	1	0	0	0	1	0	0
Swain	0	2	0	0	1	2	0	1	0
Transylvania	1	1	1	2	2	1	1	1	1
Tyrrell	1	2	1	0	0	2	2	1	0
Union	15	8	17	6	7	11	19	14	19
Vance	10	5	11	17	12	16	10	12	13
Wake	7.5	68	19.5	37	30	42.5	21	62	77
Warren	4	18	7	11	4	16	7	13	10
Washington	6	3	3	1	1	2	2	1	1
Watauga	5	3	2	3	3	4	1	2	1
Wayne	6	25	40	20	16	20.5	16	23	26
Wilkes	2	6	3.5	6	8	3	9	3	1
Wilson	12	10	12	11	9	10	16	19	10
Yadkin	4	4	4	1	0	1	3	2	2
Yancey	0	0	2	0	1	0	7	2	1
<b>Total</b>	<b>694.5</b>	<b>935</b>	<b>708.5</b>	<b>737</b>	<b>742.5</b>	<b>934.7</b>	<b>970.9</b>	<b>1236.4</b>	<b>1096.3</b>

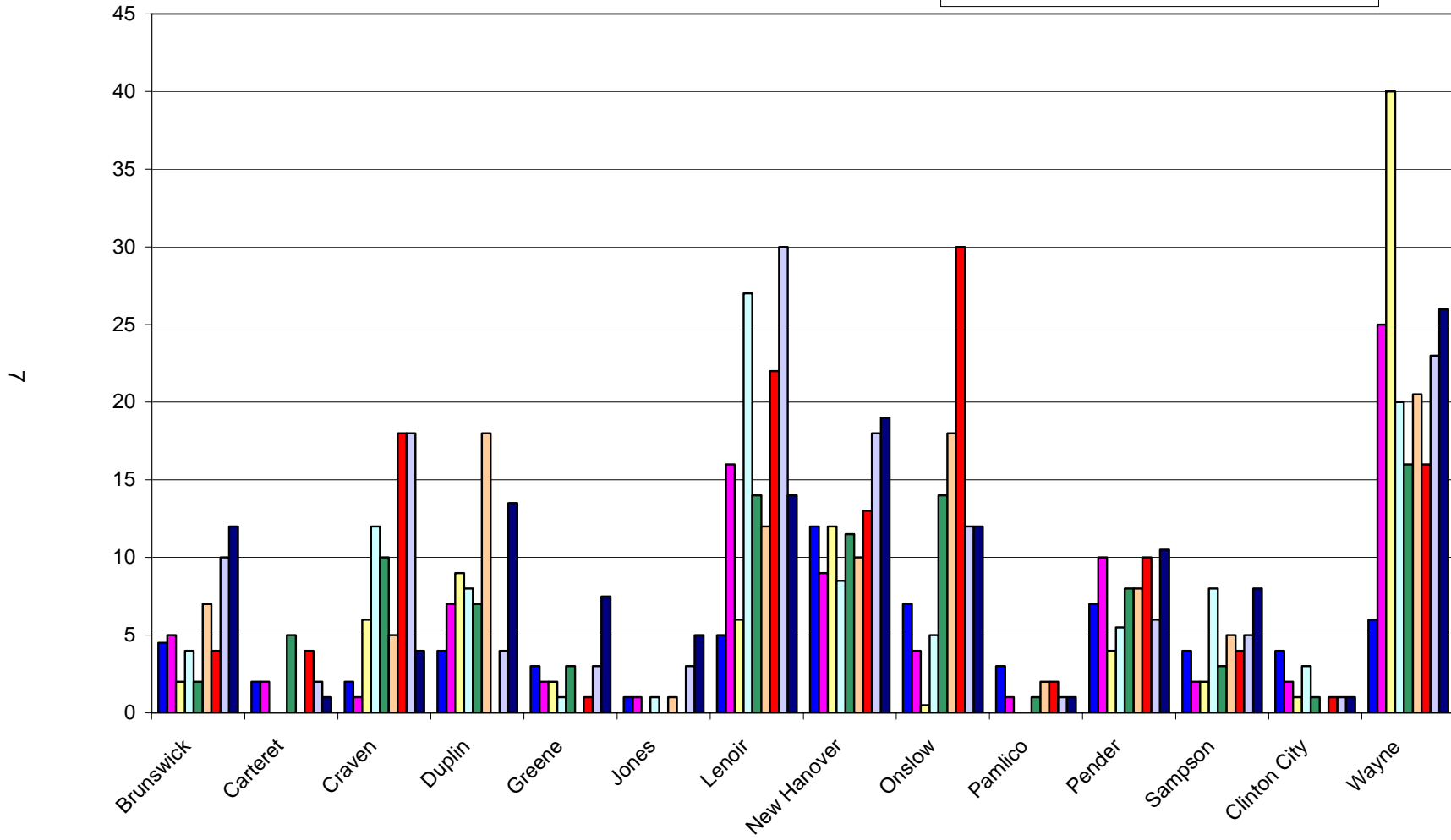
### Vacancies By Regions



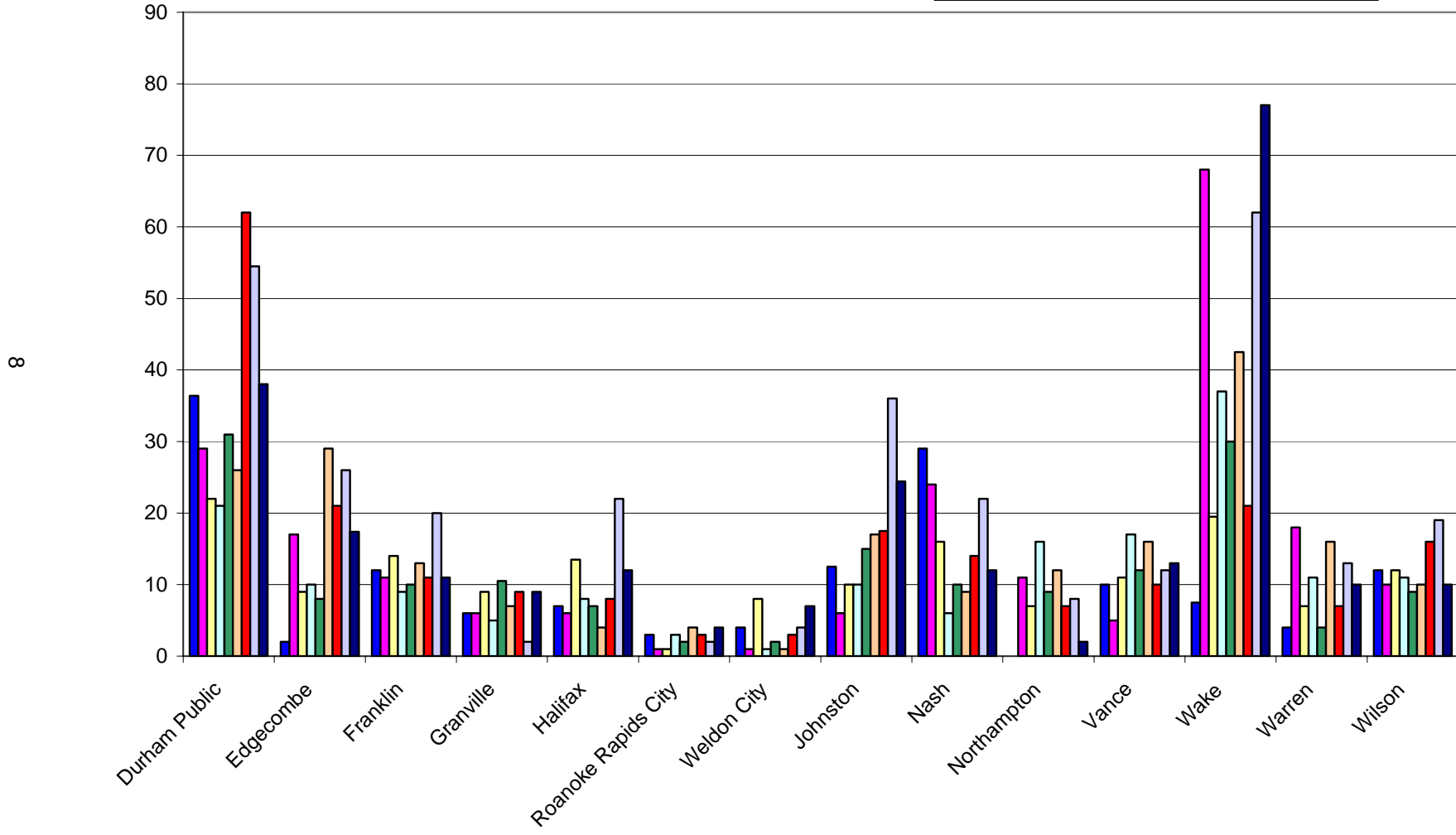
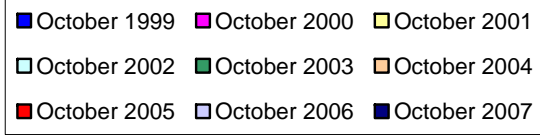
# Region 1



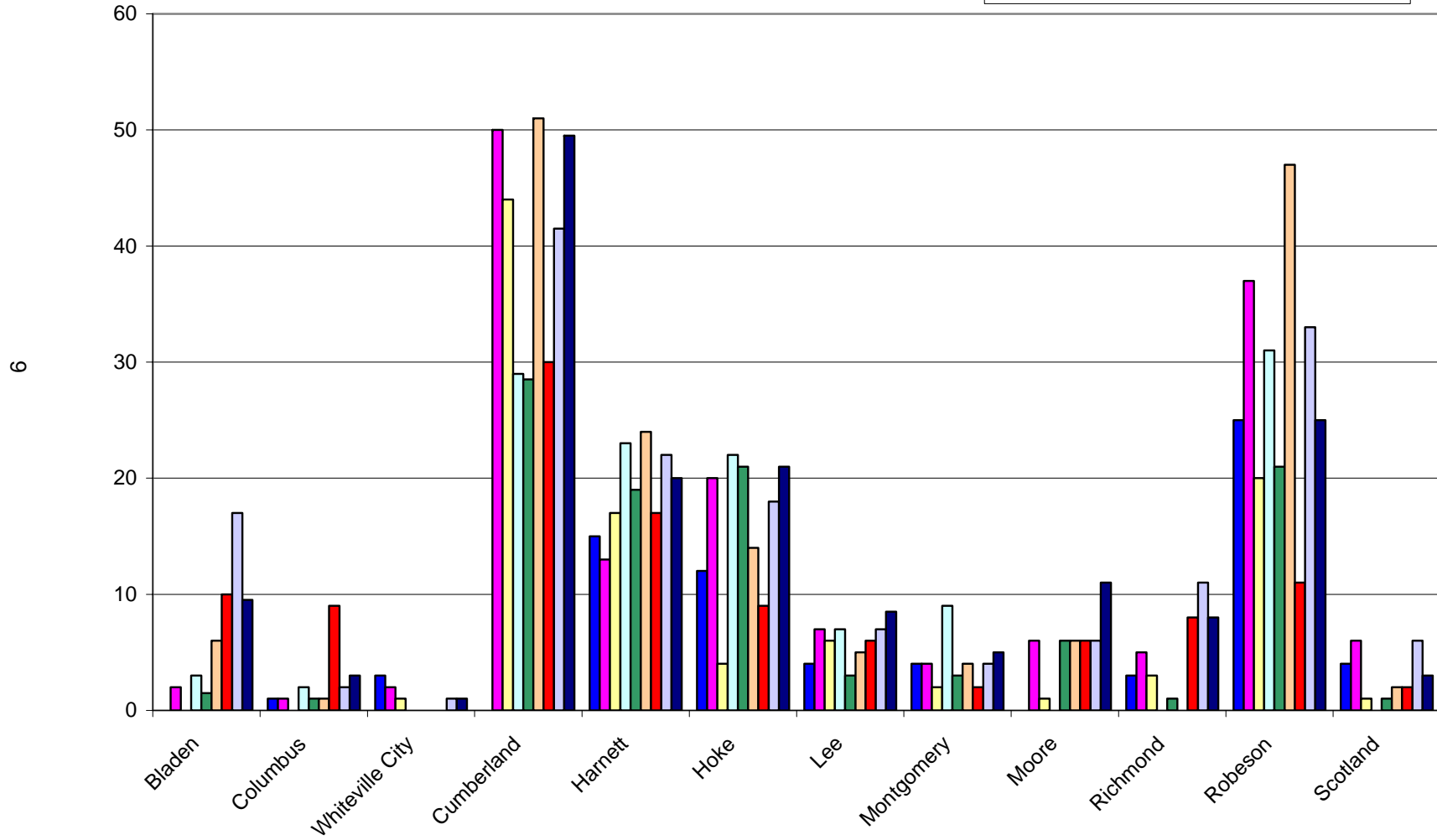
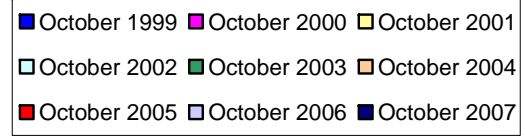
### Region 2



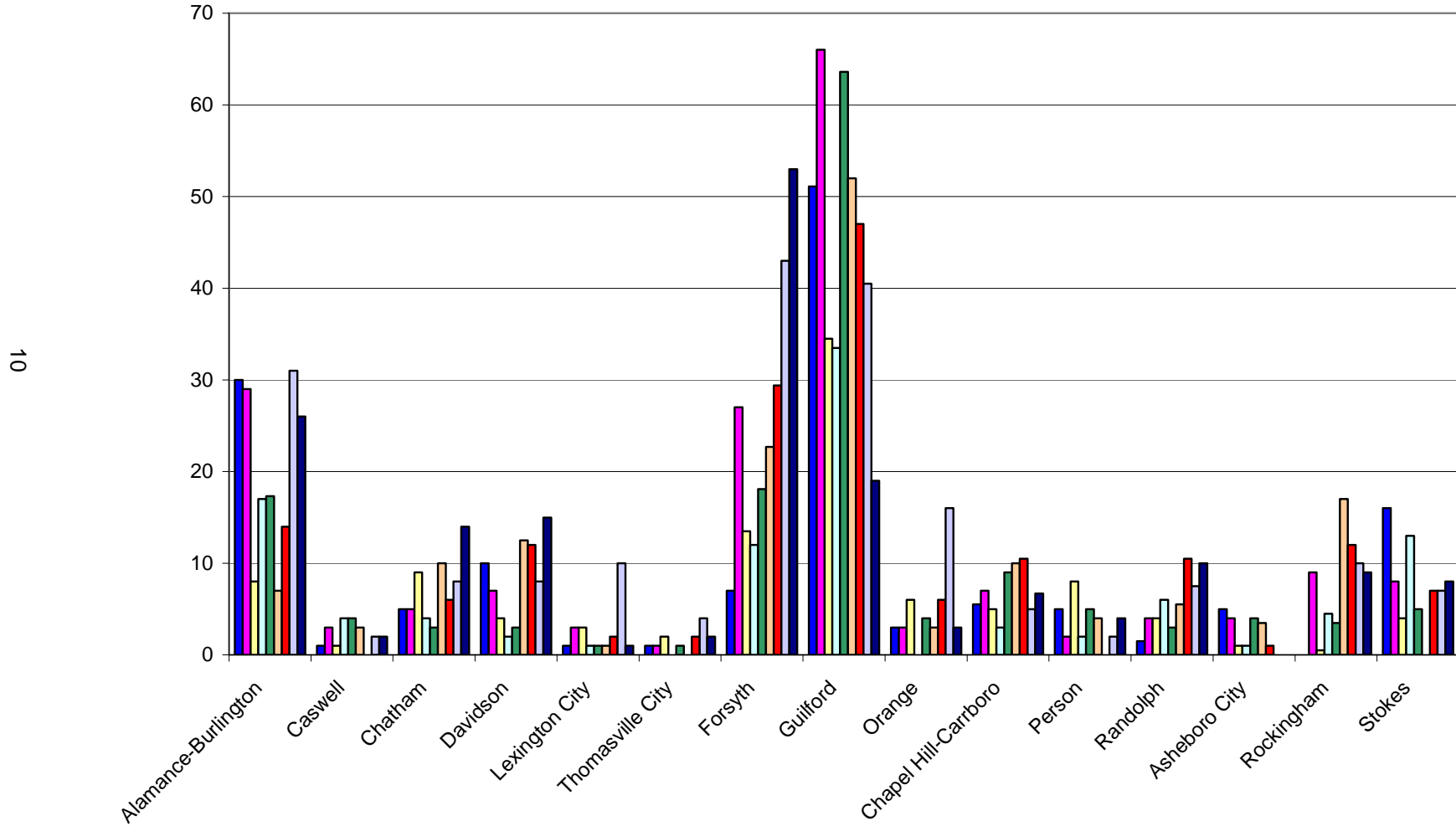
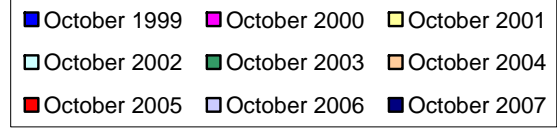
### Region 3



### Region 4



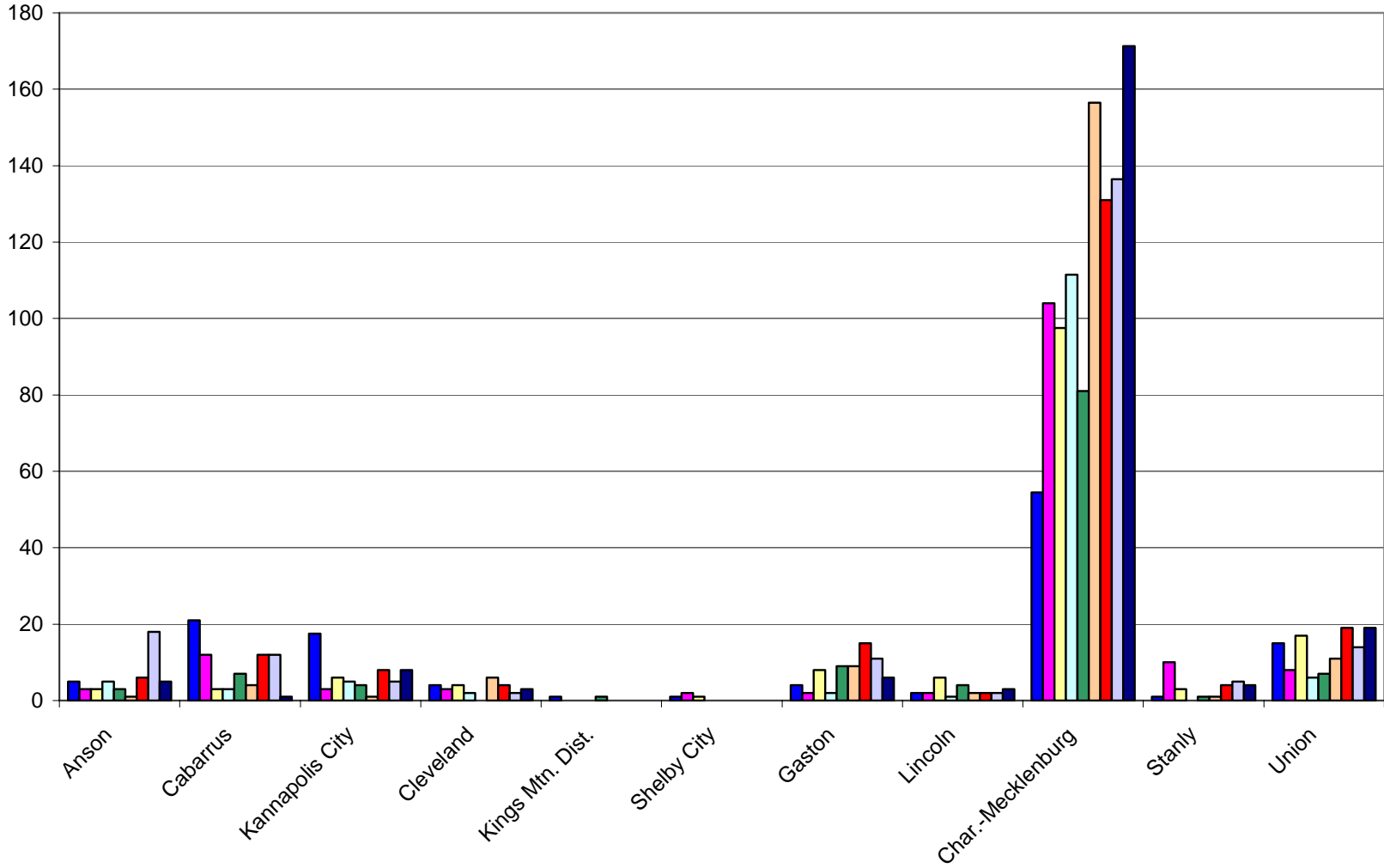
### Region 5



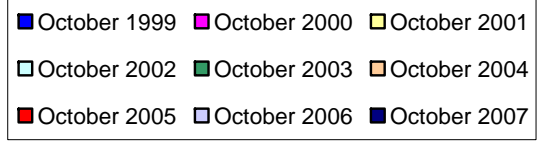
### Region 6



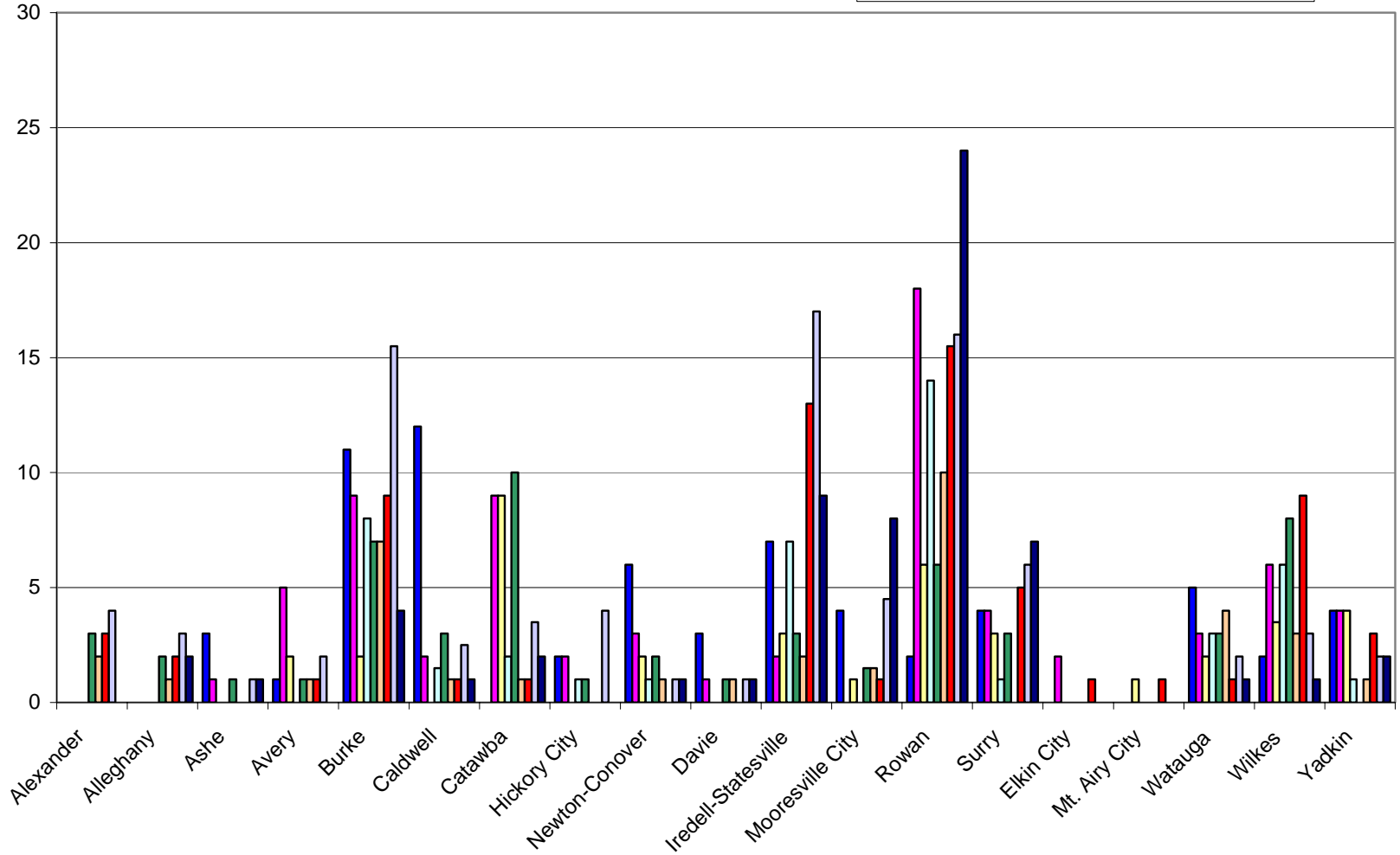
11



### Region 7



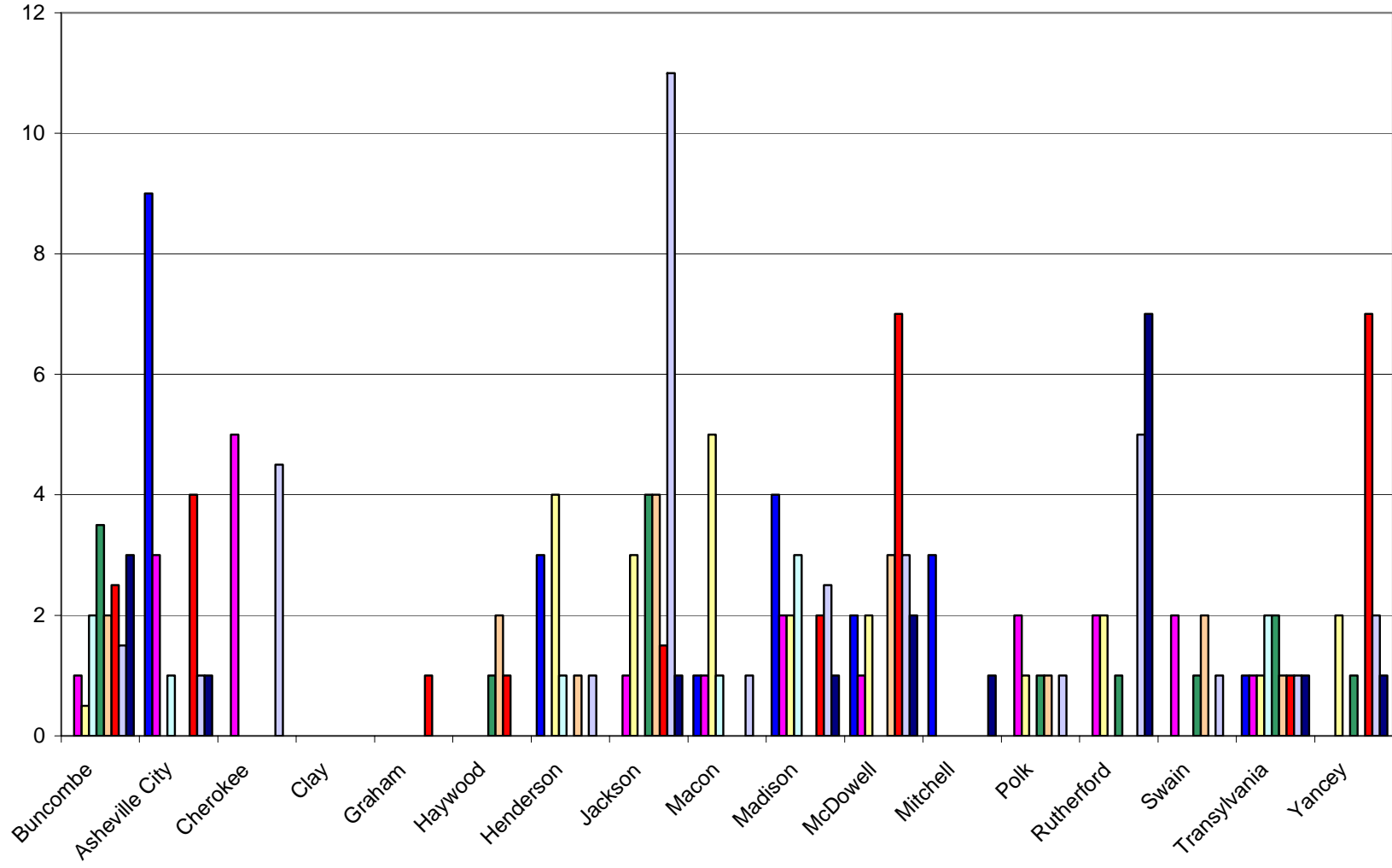
12



### Region 8



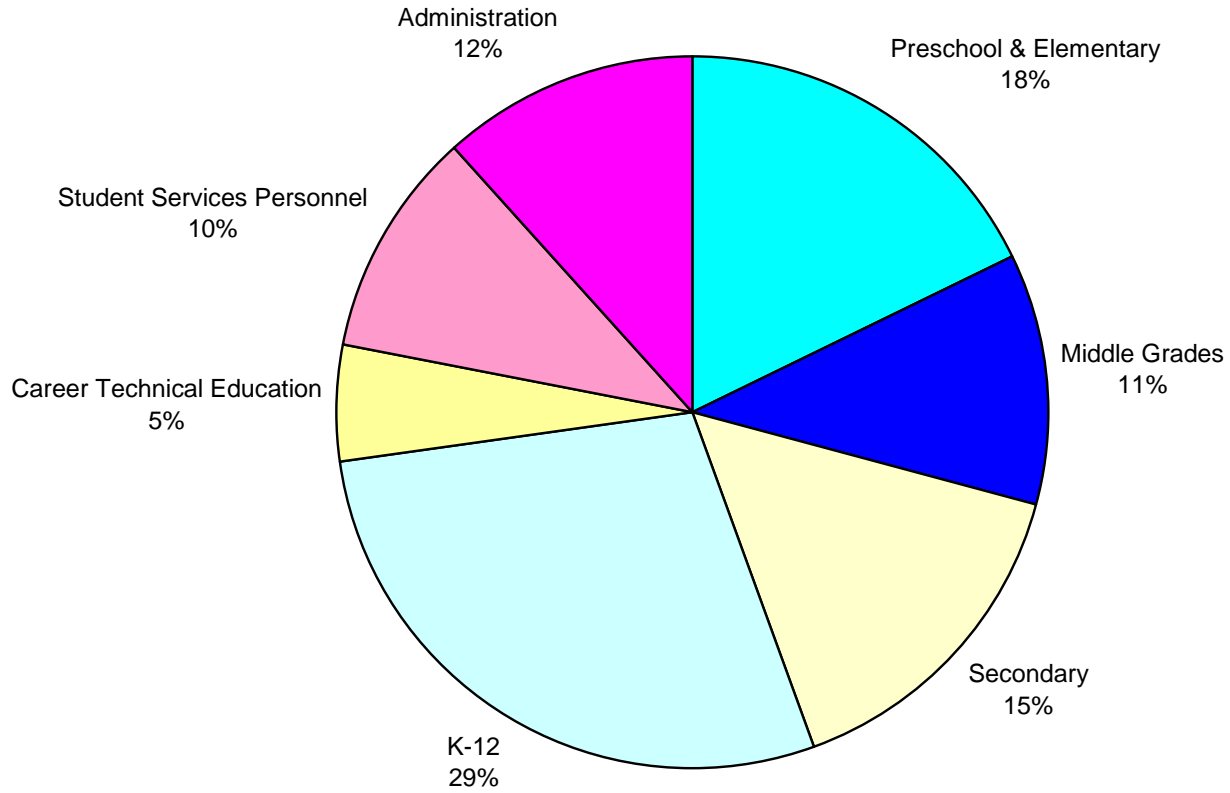
13

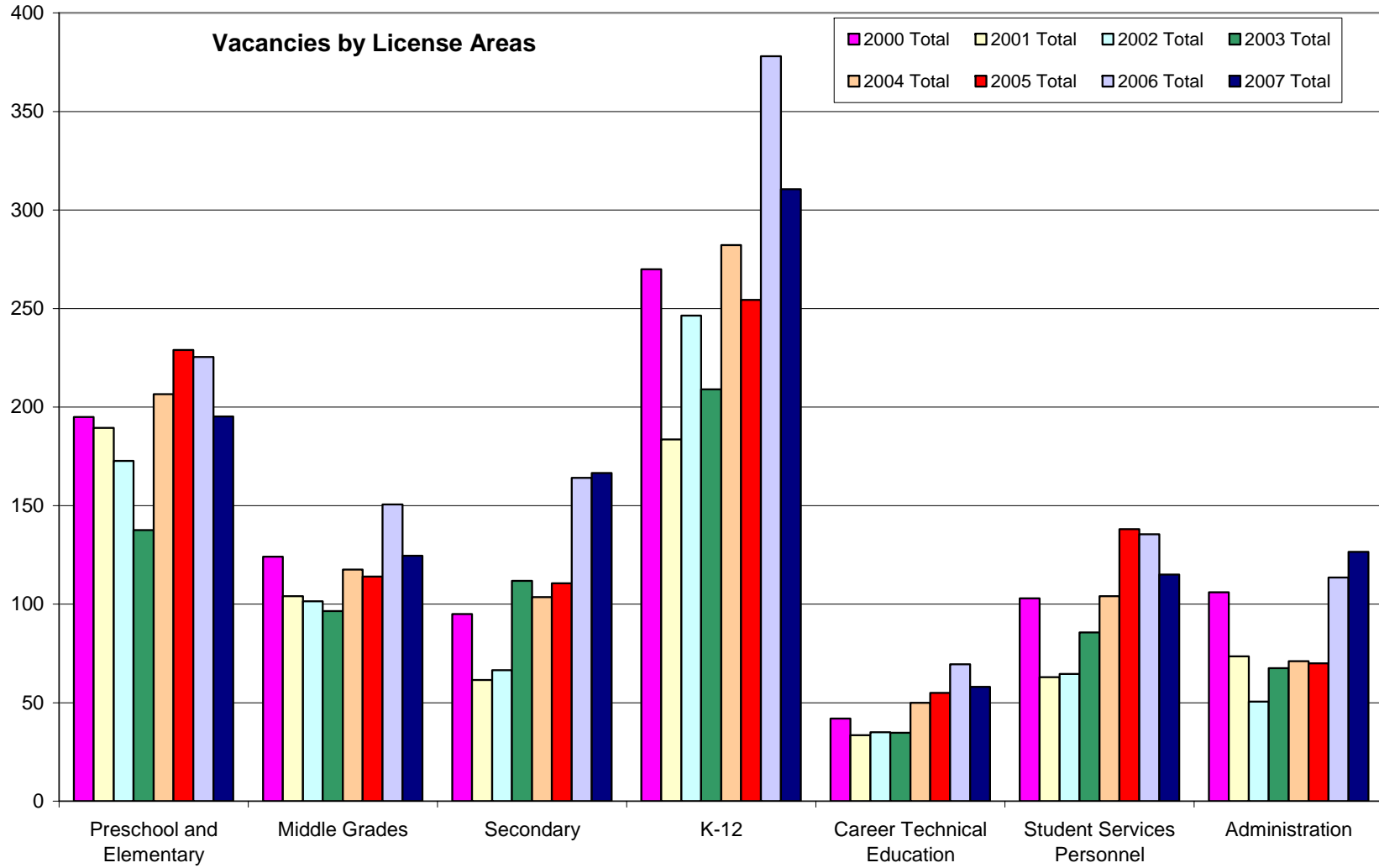


## Vacancies Reported by Licensure Area

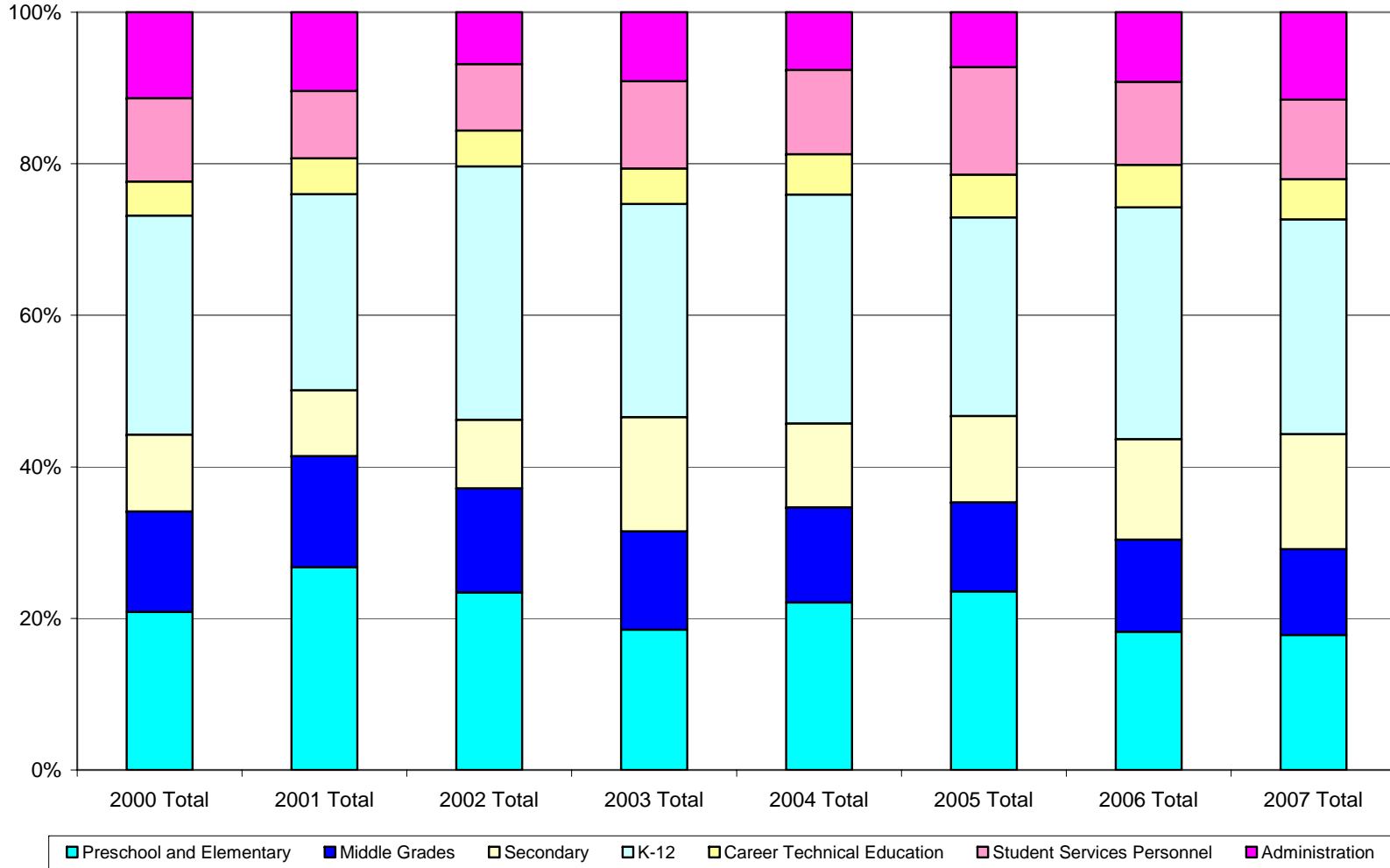
LICENSURE AREA	October 2000	October 2001	October 2002	October 2003	October 2004	October 2005	October 2006	October 2007
<b>Preschool &amp; Elementary</b>	<b>195</b>	<b>189.5</b>	<b>172.6</b>	<b>137.5</b>	<b>206.5</b>	<b>229</b>	<b>225.4</b>	<b>195.2</b>
B-K	18	15	32	12	18	25	14	17
K-6	177	174.5	140.6	125.5	188.5	204	211.4	178.2
<b>Middle Grades</b>	<b>124</b>	<b>104</b>	<b>101.5</b>	<b>96.5</b>	<b>117.5</b>	<b>114</b>	<b>150.5</b>	<b>124.5</b>
Language Arts 6-9	36	27.5	24	28.5	33.5	27	37.5	37
Social Studies 6-9	10	13.5	10	9	20.5	11.5	14	15
Math 6-9	39	29.5	36	32.5	32.5	36.5	47.5	38
Science 6-9	31	19.5	19	20.5	21.5	23.5	28.5	15.5
Other 6-9	8	14	12.5	6	9.5	15.5	23	19
<b>Secondary</b>	<b>95</b>	<b>61.5</b>	<b>66.5</b>	<b>111.8</b>	<b>103.5</b>	<b>110.5</b>	<b>164</b>	<b>166.5</b>
English 9-12	15	14	13.5	15	18.5	16	35	35.5
Social Studies 9-12	8	5	7	7.5	7	10	15.5	10.5
Math 9-12	29	25	25	44.5	45	48	60.5	70.5
Science 9-12	18	9.5	9	21	17.5	25	31	31
Other 9-12	25	8	12	23.8	15.5	11.5	22	19
<b>K-12</b>	<b>270</b>	<b>183.5</b>	<b>246.4</b>	<b>208.9</b>	<b>282.2</b>	<b>254.4</b>	<b>378</b>	<b>310.6</b>
Exceptional Children K-12	156	108	169	126.2	163	171	257.5	218.2
Art K-12	12	18	10.5	11	18	3.5	11.5	13.5
Music K-12	27	13	18.9	18.5	19	14	15.5	12
Physical Education K-12	28	17.5	21.5	16.1	21	18	18.5	16
Health K-12	2	0	3.5	0.5	2	0	0.5	1.5
Foreign Language K-12	20	12	11.5	19.6	33.7	18.4	33	17.9
English as a Second Language	25	15	11.5	17	25.5	29.5	41.5	30.5
Other K-12								1
<b>Career Technical Education</b>	<b>42</b>	<b>33.5</b>	<b>35</b>	<b>34.7</b>	<b>50</b>	<b>55</b>	<b>69.5</b>	<b>58</b>
Agriculture	1	0	0	3	1	2	4.5	2
Family & Consumer Sciences	9	7.5	5	8.5	14	15.5	13	10.5
Marketing	1	1	4	0	2	2	0	5
Business	6	9	7.5	6	6	5	11	8.5
Technology	12	12	4	8	6	10.5	15	14
Trade & Industrial Education	4	1	1	3	6	5	12.5	5
Other (Career Technical Ed.)	9	3	13.5	6.2	15	15	13.5	13
<b>Student Services Personnel</b>	<b>103</b>	<b>63</b>	<b>64.5</b>	<b>85.6</b>	<b>104</b>	<b>138</b>	<b>135.5</b>	<b>115</b>
Media	9	19	16	14	22	27	26	17
School Counselor	37	13.5	24	33.5	29	29	32	23
Psychologist	17	14.5	12.5	11.6	13	17.5	33	20
Social Worker	11	2	3	8.5	5.5	4.5	7.5	5
Audiologist	3	1	0	0	2.5	0	2	2
Speech-Language Pathologist	19	13	9	18	30	57	35	46
Other	7	0	0	0	2	3	0	2
<b>Administration</b>	<b>106</b>	<b>73.5</b>	<b>50.5</b>	<b>67.5</b>	<b>71</b>	<b>70</b>	<b>113.5</b>	<b>126.5</b>
Assistant Principal	27	18	14	13	21	19	22.5	30
Principal	12	11	4	11	3	8	7	8
Central Office Other	67	44.5	32.5	43.5	47	43	84	88.5
<b>Total</b>	<b>935</b>	<b>708.50</b>	<b>737</b>	<b>742.5</b>	<b>934.7</b>	<b>970.9</b>	<b>1236.4</b>	<b>1096.3</b>

### 2007 Vacancies by License Area

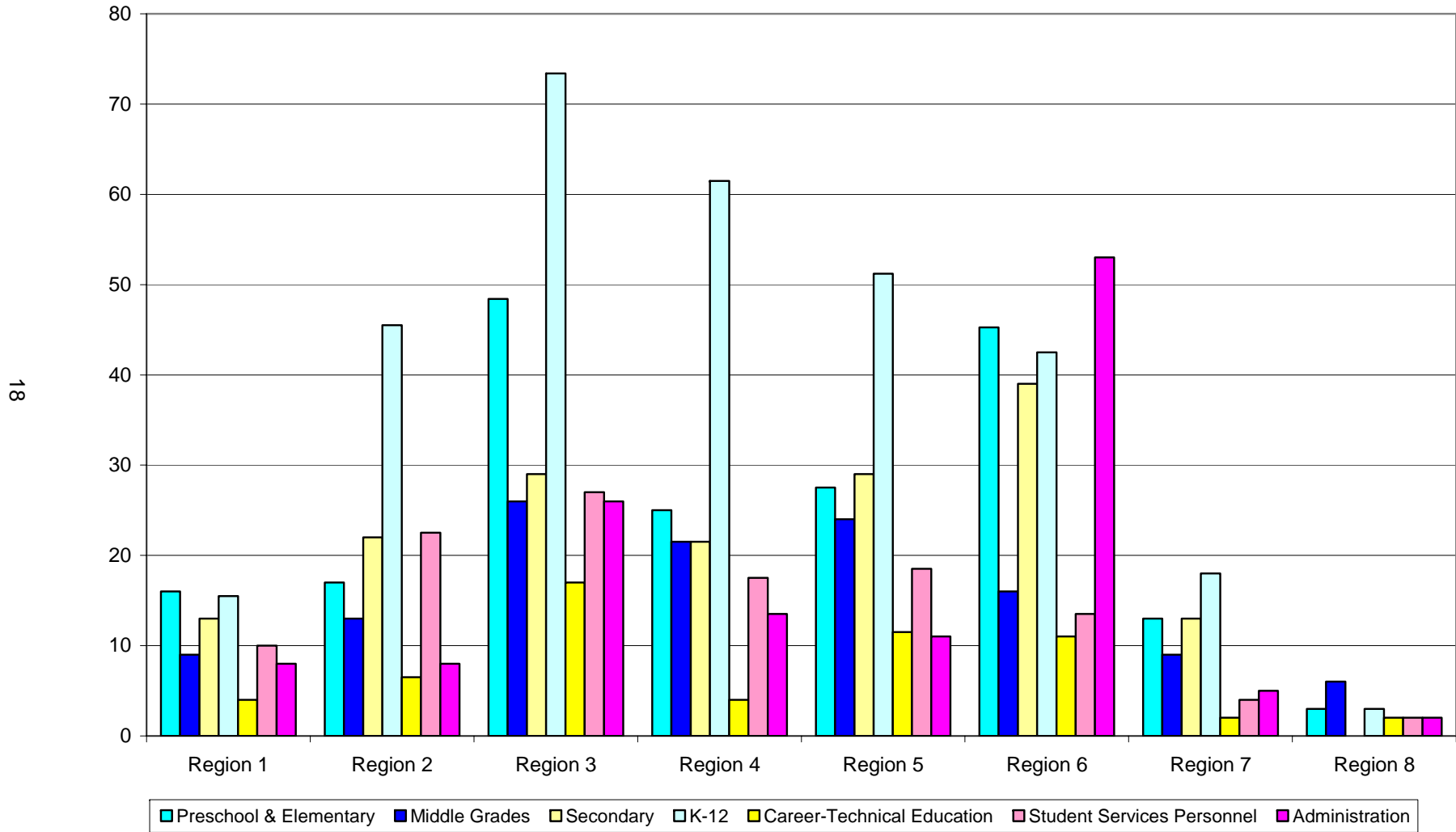




Relative Percent by Area by Year



2007 Vacancy Areas by Region



2007 Relative Percent of License Area by Region

